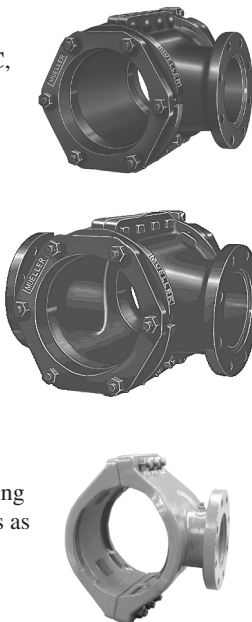


## FIRE PROTECTION PRODUCTS

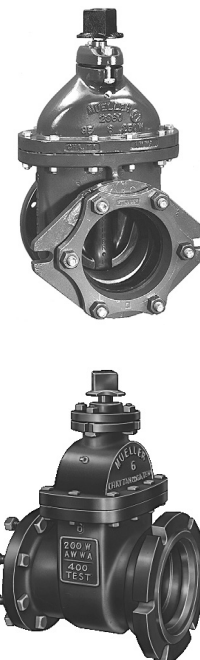
### MUELLER® Tapping Sleeves and Crosses

- ❑ Full range of Tapping Sleeves and Crosses to fit most types of pipe including cast iron, ductile iron, A-C, and cast iron O.D. PVC--Also outlet sealed Tapping Sleeves for steel pipe size O.D. PVC plastic pipe and steel pipe.
- ❑ Sizes range from 4"x4" to 36"x 30".
- ❑ All sleeves have outlet flange with dimensions and drilling that comply with ANSI B16.1, class 125 and with MSS SP-60.
- ❑ Available with optional MUELLER HP® Epoxy Coating-- A-C sleeves are coated with orange primer. T-28 sleeve has epoxy coating and 304 stainless steel nuts and bolts as standard.
- ❑ Maximum working pressures: see product listings.



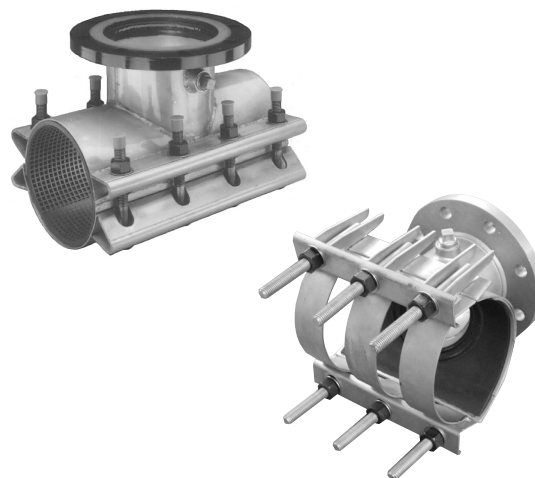
### MUELLER Tapping Valves

- ❑ Choice of Resilient Wedge or IBBM types.
- ❑ Sizes 4" through 48" Resilient Wedge 14" through 24" IBBM.
- ❑ One end flanged with alignment lip to attach to Tapping Sleeve, other end available with a variety of end connections with a special flange to permit attachment of Drilling Machine and Adapter.
- ❑ Meets all applicable parts of ANSI/AWWA C500, C509 or C515 Standards. UL listed, FM approved
- ❑ Non-rising stem (NRS).
- ❑ RWGV: maximum working pressure 4" - 12" 200 psig (1379 kPa)--test pressure 400 psig (2758 kPa) 14" - 48" 250 psig (1723 kPa)--test pressure 500 psig (3447 kPa)
- ❑ IBBM: maximum working pressure 14"-24" 150 psig (1034 kPa)-- test pressure 300 psig (2068 kPa).



### MUELLER Stainless Steel Tapping Sleeves

- ❑ Sizes to fit iron pipe size PVC, C900 cast iron O.D. PVC, A-C, cast iron and ductile iron pipe.
- ❑ Sizes range from 4"x4" through 24"x12".
- ❑ Test plug standard.
- ❑ Fully passivated.
- ❑ Choice of outlet flange materials include stainless steel, carbon steel or ductile iron, all with dimensions and drilling that comply with ANSI B16.1, class 125 and with MSS SP-60.
- ❑ H-304 "Waffle" 360° gasket with integral gap bridge.
- ❑ H-300 has outseal gasket with molded in O-rings
- ❑ Maximum working pressures: see product listings.



### MUELLER Cut-In Sleeve and Valve

- ❑ MUELLER Cut-In Sleeve and Valve are used to install a gate valve in an existing cast iron, ductile iron or cast iron O.D. PVC plastic pipe main when water interruption is permissible.
- ❑ Cut-In Sleeves are marked with length of pipe that is to be cut from main.
- ❑ Mechanical joint ends speed installation.
- ❑ Meets all applicable parts of ANSI/AWWA C500, C509 or C515 Standards. UL listed, FM approved.

