

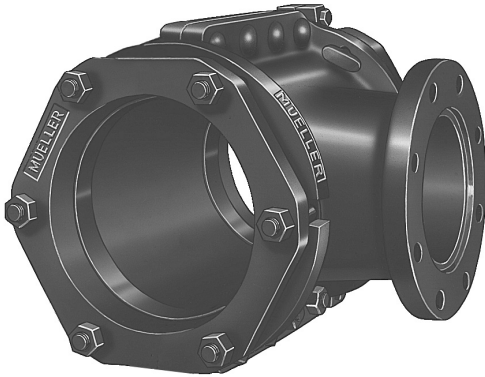
TAPPING SLEEVES AND CROSSES



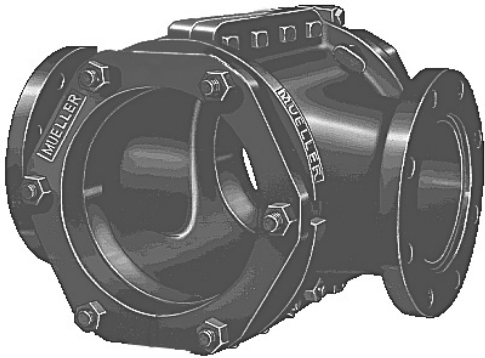
UL / FM

FIRE PROTECTION PRODUCTS

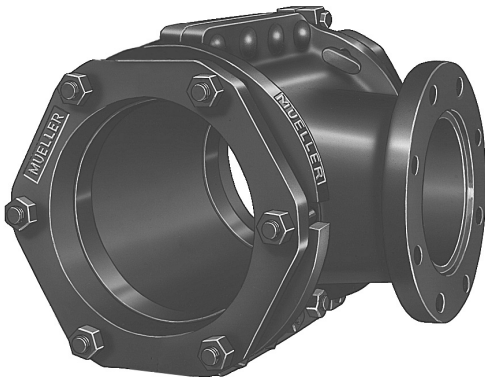
**All Tapping Sleeves and Crosses meet AWWA Standards.
There are no UL Listing Standards for Tapping Sleeves or Crosses.**



H-615



H-715



T-9

- H-615:** Mechanical Joint Tapping Sleeve with Duck Tipped End Gaskets.
H-616: Mechanical Joint Tapping Sleeve with Plain Rubber End Gaskets.
H-715: Mechanical Joint Tapping Cross with Duck Tipped End Gaskets.
H-716: Mechanical Joint Tapping Cross with Plain Rubber End Gaskets.

- Maximum Working Pressure: 4"-24" main sizes - 250 psi.
- H-615 and H-715 are suitable for use on AWWA Classes A & B cast iron and all classes of Ductile Iron and ANSI Classes 50 - 100 cast iron pipe.
- H-615 and H-715 are suitable for use on AWWA Classes A & B cast iron pipe and ANSI Classes 50 - 100 cast iron pipe.
- H-616 and H716 are suitable for use on AWWA Classes C & D cast iron pipe and ANSI Classes 150 - 250 cast iron pipe, the 4" and 6" sizes are also suitable for use with AWWA Class B cast iron pipe.

Sizes*: 4"x4", 6"x4", 6"x6", 8"x4", 8"x6", 8"x8", 10"x4", 10"x6", 10"x8", 10"x10", 12"x4", 12"x6", 12"x8", 12"x10", 12"x12", 14"x14", 16"x4", 16"x6", 16"x8", 16"x10", 16"x12", 16x14", 18"x4", 18"x6", 18"x8", 18"x10", 18"x12", 20"x4", 20"x6", 20"x8", 20"x10", 20"x12", 20"x14", 24"x4", 24"x6", 24"x8", 24"x10", 24"x12", 24"x14"

NOTE: H-615 and H-616 (H-715 and H-716) described above are the same except for the end gaskets. One mechanical joint sleeve of a nominal size with two sets of end gaskets will fit all classes of pipe listed. If there is any question as to the class of pipe with which the sleeve is to be used, we recommend ordering and stocking both sets of end gaskets for each sleeve.

*The first number is size of main, second is size of side outlet of sleeve.

T-9: Mechanical Joint Tapping Sleeve

- Outlet flange dimensions and drilling comply with ANSI B16.1, class 125 and with MSS SP-60
- Certified to ANSI/NSF 61.
- Ductile Iron body with 3/4" NPT test plug.
- 150 psig (1034 kPa) maximum working pressure.

Sizes*: 30"x4", 30"x6", 30"x8", 30"x12", 30"x16", 30"x20", 30"x24", 36"x4", 36"x6", 36"x8", 36"x12", 36"x16", 36"x20"

*The first number is size of main, second is size of side outlet of sleeve.

Nominal size of main	O.D. Range		Class and type of pipe
	Inch	mm	
30"	31.74	806.19	Cast Iron Classes A
	32.00	812.80	Cast Iron Classes B, DI, C-900 PVC
	32.40	822.96	Cast Iron Classes C
36"	37.96	964.18	Cast Iron Classes A
	38.3	972.82	Cast Iron Classes B, DI, C-900 PVC
	38.7	982.98	Cast Iron Classes C

ORDERING INSTRUCTIONS FOR TAPPING SLEEVES -

Specify: Quantity, Nominal Size of Main, Type and Class of Main, Circumference or O.D. of Main, Size of Outlet and Catalog Number.