

FIRE PROTECTION PRODUCTS

H-304: Stainless Steel Tapping Sleeve

- Sizes-4"-24" main and outlet (see chart below for available size combinations).
- Outlet choices: flange or integral MJ outlet
- Outlet flange material option: 304L stainless steel, carbon steel, or ductile iron*
- Integral MJ flange is 304L stainless steel.
- Certified to ANSI/NSF 61.
- 3/4" NPT brass test plug (Stainless Steel optional).
- 4"-12" sizes--250 psig (1723 kPa) maximum working pressure.
- 14"-24" sizes--200 psig (1379 kPa) maximum working pressure.

How to determine a Mueller Tapping Sleeve Part Number

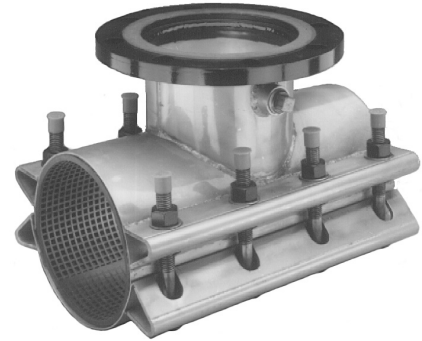
Select the appropriate numbers from the pipe information chart that follows.

Example: For 6"x6" with 7.30-7.50 O.D. Range and stainless steel flange

Resulting Part No. **0606H304SS0750**

* 3" outlet flange only available in stainless steel

** SS = stainless steel, CS = carbon steel flange, DI = ductile iron flange, MJ=integral mechanical joint outlet

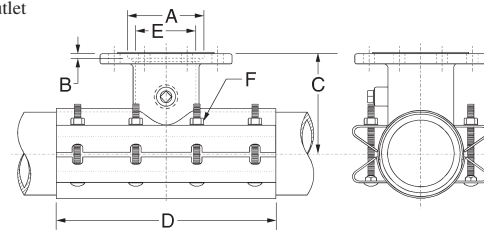


H-304

Main Size	Outlet Size	Model No.	Flange Material	Maximum O.D.
06	06	H-304*	SS**	0750

Sleeve O.D. Range

Size of main	Size of outlet flange	Available sleeve O.D. ranges		
		Inch	mm	
3"				
4"	4"	4.50 - 4.90	114.30 - 124.46	
		4.80 - 5.00	121.92 - 127.00	
6"	4", 6"	6.59 - 6.99	167.39 - 177.55	
		6.89 - 7.30	175.00 - 185.42	
		7.10 - 7.50	180.34 - 190.50	
		7.40 - 7.80	187.96 - 198.12	
		7.90 - 8.30	200.66 - 210.82	
8"	4", 6"	8.62 - 9.06	218.95 - 230.12	
		9.04 - 9.45	229.61 - 240.03	
	4", 6", 8"	9.20 - 9.60	233.68 - 243.84	
		9.60 - 10.00	243.84 - 254.00	
		4", 6", 8"	9.90 - 10.30	251.46 - 261.62
			4", 6", 8", 10"	10.73 - 11.13
11.05 - 11.45	280.67 - 290.83			
11.70 - 12.10	297.18 - 307.34			
12.00 - 12.40	304.80 - 314.96			
12.50 - 12.90	317.50 - 327.66			
12"	4", 8", 10", 12"	13.16 - 13.56	334.24 - 344.42	
		13.60 - 14.09	345.44 - 357.88	
		14.10 - 14.58	358.14 - 370.33	
		4", 6", 8", 10", 12"	12.50 - 12.90	317.5 - 327.66
			13.16 - 13.56	334.26 - 344.42
14"	4", 6", 8", 10", 12"	13.60 - 14.09	345.44 - 357.88	
		14.10 - 14.58	358.14 - 370.33	
		17.40 - 17.80	441.96 - 452.12	
		17.54 - 17.94	445.51 - 455.67	
		17.85 - 18.25	453.39 - 463.55	
16"	4", 6", 8", 10", 12"	18.15 - 18.55	461.01 - 471.17	
		18.60 - 19.00	472.44 - 482.60	
		19.30 - 19.70	490.22 - 500.38	
		19.70 - 20.10	500.38 - 510.54	
		21.40 - 21.80	543.56 - 553.72	
18"	4", 6", 8", 10", 12"	21.90 - 22.30	556.26 - 566.42	
		22.30 - 22.70	566.42 - 576.58	
		23.30 - 23.70	591.82 - 601.98	
		23.80 - 24.10	604.52 - 612.14	
20"	4", 6", 8", 10", 12"	25.60 - 26.00	650.24 - 660.40	



Dimensions

Size Main	Outlet	Outlet Flange Dimensions (inches)		Sleeve Dimensions (inches)			Bolts Per Side
		A	B	C	D	E	
4"	4"	5.0315	.25	7.00	15	4.00	4
6"	4"	5.0315	.25	7.50	15	4.50	4
6"	6"	7.0315	.31	8.00	15	6.00	4
8"	4"	5.0315	.25	8.50	15	4.50	4
8"	6"	7.0315	.31	9.00	15	6.50	4
8"	8"	9.0315	.31	9.50	18	8.00	6
10"	4"	5.0315	.25	10.00	15	4.50	4
10"	6"	7.0315	.31	10.50	15	6.50	4
10"	8"	9.0315	.31	11.00	18	8.50	6
10"	10"	11.0315	.31	11.50	24	10.00	8
12"	4"	5.0315	.25	12.00	15	4.50	4
12"	6"	7.0315	.31	12.00	15	6.50	4
12"	8"	9.0315	.31	12.00	18	8.50	6
12"	10"	11.0315	.31	12.00	24	10.50	8
12"	12"	13.0315	.31	12.00	30	12.00	8
14"	4"	5.0315	.25	13.63	15	4.50	4
14"	6"	7.0315	.31	13.63	15	6.50	4
14"	8"	9.0315	.31	13.63	18	8.50	6
14"	10"	11.0315	.31	13.63	24	10.50	8
14"	12"	13.0315	.31	13.63	30	12.50	8
16"	4"	5.0315	.25	14.59	15	4.50	4
16"	6"	7.0315	.31	14.59	15	6.50	4
16"	8"	9.0315	.31	14.59	18	8.50	6
16"	10"	11.0315	.31	14.59	24	10.50	8
16"	12"	13.0315	.31	14.59	30	12.50	8
18"	4"	5.0315	.25	16.00	15	4.50	4
18"	6"	7.0315	.31	16.00	15	6.50	4
18"	8"	9.0315	.31	16.00	18	8.50	6
18"	10"	11.0315	.31	16.00	24	10.50	8
18"	12"	13.0315	.31	16.00	30	12.50	8
20"	4"	5.0315	.25	16.88	15	4.50	4
20"	6"	7.0315	.31	16.88	15	6.50	4
20"	8"	9.0315	.31	16.88	18	8.50	6
20"	10"	11.0315	.31	16.88	24	10.50	8
20"	12"	13.0315	.31	16.88	30	12.50	8
24"	4"	5.0315	.25	19.00	24	4.50	8
24"	6"	7.0315	.31	19.00	24	6.50	8
24"	8"	9.0315	.31	19.00	24	8.50	8
24"	10"	11.0315	.31	19.00	24	10.50	8
24"	12"	13.0315	.31	19.00	30	12.50	10