

STAINLESS STEEL TAPPING SLEEVE



UL / FM

FIRE PROTECTION PRODUCTS

H-300

Outlet Seal Stainless Steel Tapping Sleeve

- Sizes-4"-12" main and outlet
(see chart below for available size combinations).
- 304L Stainless steel, or ductile iron outlet flange which meets or exceeds all applicable requirements of ANSI B16.1, class 125 and in accordance with MSS-SP60.
- Certified to ANSI/NSF 61.
- 3/4" NPT brass test plug (Stainless Steel optional).
- 4"-12" sizes--250 psig (1723 kPa) maximum working pressure.



How to determine a Mueller Tapping Sleeve Part Number

Select the appropriate numbers from the pipe information chart that follows.

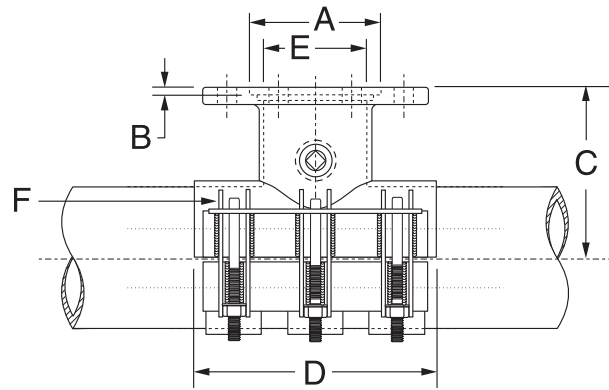
Example: For 6"x6" with 7.30-7.50 O.D. Range and stainless steel flange

Resulting Part No. **0606H300SS0750**

| Main Size | Outlet Size | Model No. | Flange Material | Maximum O.D. |
|-----------|-------------|-----------|-----------------|--------------|
| 06 | 06 | H-300* | SS** | 0750 |

* H-300 is constant for all Mueller Stainless Steel Tapping Sleeves listed here.

** SS = stainless steel, DI = ductile iron



Sleeve O.D. Range

| Nominal Pipe Size | Outlet Flange | Sleeve O.D. Range (inches) |
|-------------------|----------------------|----------------------------|
| 4" | 4" | 4.50-4.90 |
| 6" | 4", 6" | 6.59-6.99 |
| | | 6.89-7.30 |
| | | 7.10-7.50 |
| | | 7.40-7.80 |
| 8" | 4", 6" | 7.90-8.30 |
| | 4", 6", 8" | 8.62-9.06 |
| | | 9.04-9.45 |
| | | 9.20-9.60 |
| 9.60-10.00 | | |
| 10" | 4", 6", 8" | 9.90-10.30 |
| | 4", 6", 8", 10" | 10.73-11.13 |
| | | 11.05-11.45 |
| | | 11.70-12.10 |
| | | 12.00-12.40 |
| 12" | 4", 6", 8", 10", 12" | 12.50-12.90 |
| | | 13.16-13.56 |
| | | 13.60-14.09 |
| | | 14.10-14.58 |

Dimensions

| Size | | Outlet Flange Dimensions (inches) | | Sleeve Dimensions (inches) | | | Studs Per Side |
|------|--------|-----------------------------------|-----|----------------------------|----|--------|----------------|
| Main | Outlet | A | B | C | D | E | F |
| 4" | 4" | 5.0315 | .25 | 7.00 | 10 | 4.00† | 3 |
| 6" | 4" | 5.0315 | .25 | 7.50 | 10 | 4.50 | 3 |
| 6" | 6" | 7.0315 | .31 | 8.00 | 12 | 6.00† | 3 |
| 8" | 4" | 5.0315 | .25 | 8.50 | 10 | 4.50 | 3 |
| 8" | 6" | 7.0315 | .31 | 9.00 | 12 | 6.50 | 3 |
| 8" | 8" | 9.0315 | .31 | 9.50 | 15 | 8.00† | 4 |
| 10" | 4" | 5.0315 | .25 | 10.00 | 10 | 4.50 | 3 |
| 10" | 6" | 7.0315 | .31 | 10.50 | 12 | 6.50 | 3 |
| 10" | 8" | 9.0315 | .31 | 11.00 | 15 | 8.50 | 4 |
| 10" | 10" | 11.0315 | .31 | 11.50 | 18 | 10.00† | 5 |
| 12" | 4" | 5.0315 | .25 | 12.00 | 10 | 4.50 | 3 |
| 12" | 6" | 7.0315 | .31 | 12.00 | 12 | 6.50 | 3 |
| 12" | 8" | 9.0315 | .31 | 12.00 | 15 | 8.50 | 4 |
| 12" | 10" | 11.0315 | .31 | 12.00 | 18 | 10.50 | 4 |
| 12" | 12" | 13.0315 | .31 | 12.00 | 21 | 12.00† | 5 |

† With size-on-size sleeves, 1/2" undersize cutter must be used.