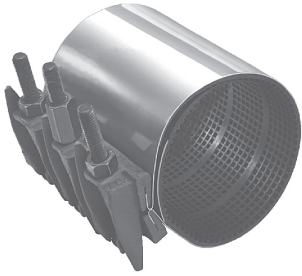


Typical Clamp



500



Starter nut



Standard bolt & nut

500 Series Single Section Pipe Repair Clamps - for 2" through 12" cast iron, ductile iron, steel pipe, A-C and PVC pipe

To specify the catalog number, provide the following information :

1. Style number—**500**
2. Length—**Standard length available (inches): 6, 7-1/2 (list as "7"), 9, 12, 15, 18, 20, 24, 30**
3. Size number—**from chart on page 11**
4. Catalog number prefix or suffix for optional features, if desired.

The catalog number for 500 Single Section Full-Seal Repair Clamp, 12" long for 8" cast iron pipe is 500-12-899.

Clamp style number	Clamp length	Clamp size number
500	12	899

Extra bolts and nuts for 500 series Single Section Full Seal Repair Clamps

Clamp size	Bolt size	Bolt part number	Nut part number
2" - 3-1/2"	1/2" x 4-1/2"	521009	521010
4" - 12" (Standard Bolt & nut)	5/8 x 6"	521008	195236
4" - 12" (Starter Bolt & nut)	5/8 x 7"	524308	526655

NOTE: 4" and larger 500 Series Clamps are provided with one starter bolt/nut per side as standard.

Stainless steel bolts

For optional 304 stainless steel bolts, washers and nuts, add "S-" prefix to clamp catalog number.

Example: S-500-12-899.

Deep socket wrenches

Long ratchet handle has thumb-tip reverse. Deep sockets (3-1/4") have double hex (12 pt.) and 1/2" square drive.



Part number	Description
515204	15-3/4" reversible Ratchet Handle
520344	7/8" Socket for 2" through 3-1/2" clamps
515207	1-1/16" Socket for 4" and larger clamps
519575	1/2" x 3/4" Adapter

Bonding device for cathodic protection

Metallic conductors are set in the gasket to provide contact between the band and the pipe surface and are available on all 500 series clamps. These conductors permit electrical current flow by establishing positive contact with pipe and band on each side of the pipe crack or break.

To specify optional bonding device for cathodic protection, add a prefix of "2" to catalog number.

Example: 2-500-12-899.

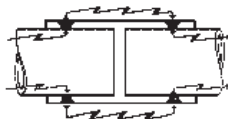
Add-on feature allows long lengthwise repairs

The gasket is cemented into the band in a 1" offset position. This allows overlapping the gasket with the band of another offset clamp when repairing a longer than usual area of pipe. This feature is not available on service outlet style clamps.

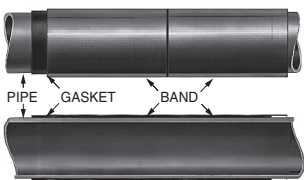
To specify optional add-on feature for longer than usual repairs, add a prefix of "1" to catalog number.

Example: 1-500-12-899.

IMPORTANT: These pipe repair clamps have demonstrated their capability to seal against water pressures commonly encountered in distribution systems. Smaller diameter clamps of a given design can seal against higher pressures than larger ones. In addition, the pressure that a clamp can contain is effected by the torque applied to the bolts, the uniformity of bolt tightening (when there is more than one bolt), as the type and extent of pipe damage, surface condition of the pipe, environmental conditions, and installation workmanship.



Bonding device



Add-on feature