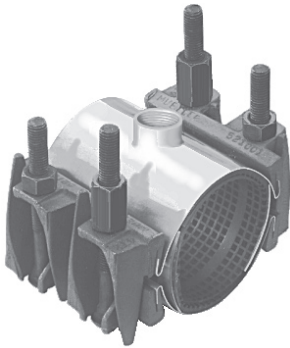


MUELLER® BRAND TWO-SECTION SERVICE OUTLET PIPE REPAIR CLAMPS

Typical Clamp



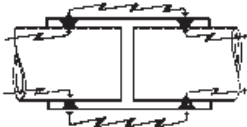
511-519



Starter nut



Standard bolt & nut



Bonding device

511 - 519 Two-Section Service Outlet Pipe Repair Clamps - with integral 3/4" through 2" IP/CC threaded service outlet - for 4" through 24" cast iron, ductile iron, steel pipe, A-C and PVC plastic pipe.

To specify the catalog number, provide the following information :

1. Style number—**511-519** (see chart below)
2. Length—**Standard length available (inches): 6, 7-1/2 (list as "7"), 9, 12, 15, 18, 20, 24, 30**
3. Size number—**from chart on page 17**
4. Catalog number prefix or suffix for optional features, if desired.

The catalog number for a Two-Section Service Outlet Repair Clamp, with 3/4" IP thread tapped outlet, 12" clamp length for 6" cast iron pipe is 511-12-675.

Clamp style number	Clamp length	Clamp size number
511	12	675

Clamp Style number

Style number	Size\type of outlet tapping thread	Sizes available*
511	3/4" IP	4.70-37.86
512	3/4" CC	4.70-37.86
513	1" IP	4.70-37.86
514	1" CC	4.70-37.86
515	1-1/4" IP	4.70-37.86
516	1-1/2" CC	4.70-37.86
517	1-1/2" IP	4.70-37.86
518	2" CC	4.70-37.86
519	2" IP	4.70-37.86

*Clamps available to fit specific size pipe within this nominal range.

Extra bolts and nuts for Mueller Xtra-Range Full Seal Repair Clamps

Clamp size	Bolt size	Bolt part number	Nut part number
4" - 24" (Standard Bolt & Nut)	5/8" x 6"	521008	195236
4" - 24" (Starter Bolt & Nut)	5/8" x 7"	524308	526655

NOTE: 4" and larger 510 Series Clamps are provided with one starter bolt/nut per side as standard.

Stainless steel bolts

For optional 304 stainless steel bolts, washers and nuts, add "S-" prefix to clamp catalog number.

Example: S-511-12-675.

Deep socket wrenches

Long ratchet handle has thumb-tip reverse. Deep sockets (3-1/4") have double hex (12 pt.) and 1/2" square drive.



Part no.	Description
515207	1-1/16" Socket for 4" and larger clamps
515204	15-3/4" with 1/2" drive reversible Ratchet Handle
519575	1/2" x 3/4" Adapter

Bonding device for cathodic protection

Metallic conductors are set in the gasket to provide contact between the band and the pipe surface and are available on all 500 series clamps. These conductors permit electrical current flow by establishing positive contact with pipe and band on each side of the pipe crack or break.

To specify optional bonding device for cathodic protection, add a prefix of "2" to catalog number.

Example: 2-511-12-675.