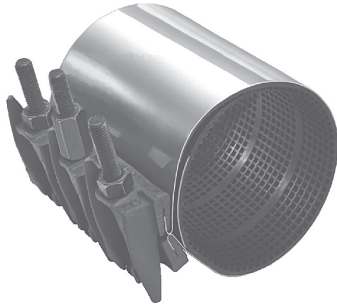


Typical Clamp

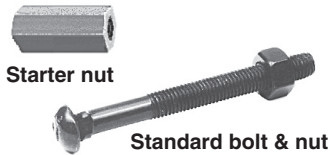


773

773 Series Joint Repair Clamp — for use on PE-160 PVC pipe solvent weld joints.

The 730 series clamp has a stepped gasket that fits over the solvent weld joint in PE-160 PVC pipe to stop leaks in the joint.

Catalog number	Nominal clamp/pipe size	Clamp length	
773-06-0238	2"	6"	12"
773-07-0289	2-1/2"	7-1/2"	12"
773-07-0350	3"	7-1/2"	12"
773-07-0450	4"	7-1/2"	12"
773-07-0663	6"	7-1/2"	12"
773-07-0863	8"	7-1/2"	12"



Starter nut

Standard bolt & nut

Extra bolts and nuts

Clamp size	Bolt size	Bolt part number	Nut part number
2" - 3-1/2"	1/2" x 4-1/2"	521009	521010
4" - 12"(Standard Bolt & nut)	5/8 x 6"	521008	195236

NOTE: 4" and larger 773 Series Clamps are provided with one starter bolt/nut per side as standard.

Stainless steel bolts

For optional 304 stainless steel bolts, washers and nuts, add "S-" prefix to clamp catalog number.

Example: S-773-06-863.

Deep socket wrenches

Long ratchet handle has thumb-tip reverse. Deep sockets (3-1/4") have double hex (12 pt.) and 1/2" square drive.

Part number	Description
515204	15-3/4" reversible Ratchet Handle
520344	7/8" Socket for 2" and 3" clamps
515207	1-1/16" Socket for 4" and larger clamps
519575	1/2"x3/4" Adapter