



PARTS LIST - GEARED VALVE

ITEM	DESCRIPTION	REQ'D	MATERIAL	ASTM	
1	CAP SCREW	1	STEEL	A307	GRADE B ZINC PLATED
2	WRENCH NUT	1	CAST IRON	A126	CLASS B
3	VALVE ACTUATOR	1			
4	ACTUATOR GASKET	1	NEOPRENE	D2000	R51
5	ADAPTER	1	STEEL	A36	
6	STUFFING BOX GASKET	1	NEOPRENE	D2000	R51
7	STUFFING BOX	1	STEEL	A36	
8	HEX HEAD BOLT	2	STEEL	A307	GRADE B ZINC PLATED
10	DRIVE SLEEVE	1	*		
11	KEY	1	STEEL		
12	STEM	1	BRONZE	**	
13	SOCKET HD. CAP SCREW	4	STEEL	A307	GRADE B ZINC PLATED
14	HEX HEAD BOLT	4	STEEL	A307	GRADE B ZINC PLATED
15	"O" RING	3	RUBBER	D2000	R34
16	"O" RING	1	RUBBER	D2000	R34
17	ANTI-FRICTION WASHER	2	BRASS		
18	BONNET	1	DUCTILE IRON	A536	65-445-12
19	Ⓐ HEX BOLT HEX NUT	12 12	STEEL STEEL	J429 A536	GRADE B ZINC PLATED GRADE B ZINC PLATED
20	"O" RING	1	RUBBER	D2000	R34
21	DISC NUT	1	BRONZE	B62	
22	DISC	1	***		
23	GUIDE CAP	2	CELCON		M90
24	FLG X FLG BODY	1	DUCTILE IRON	A536	65-45-12
25	MJ X MJ BODY	1	DUCTILE IRON	A536	65-45-12
26	FLG X MJ BODY	1	DUCTILE IRON	A536	65-45-12
31	EYEBOLT	2	STEEL		ANSI B18.5
32	HEX NUT	2	STEEL	A307	GR B PLATED

PARTS LIST NON-GEARED VALVE

27	CAP SCREW	1	STEEL	A307	GRADE B ZINC PLATED
28	WRENCH NUT	1	CAST IRON	A126	CLASS B
29	STEM	1	BRONZE	*	
30	STUFFING BOX	1	DUCTILE IRON	A536	65-45-12

NOTE:  
ITEM NOS. 27 - 30 REPLACE ITEMS NOS. 1 - 7 & 9 - 14 FOR NON-GEARED VALVE.

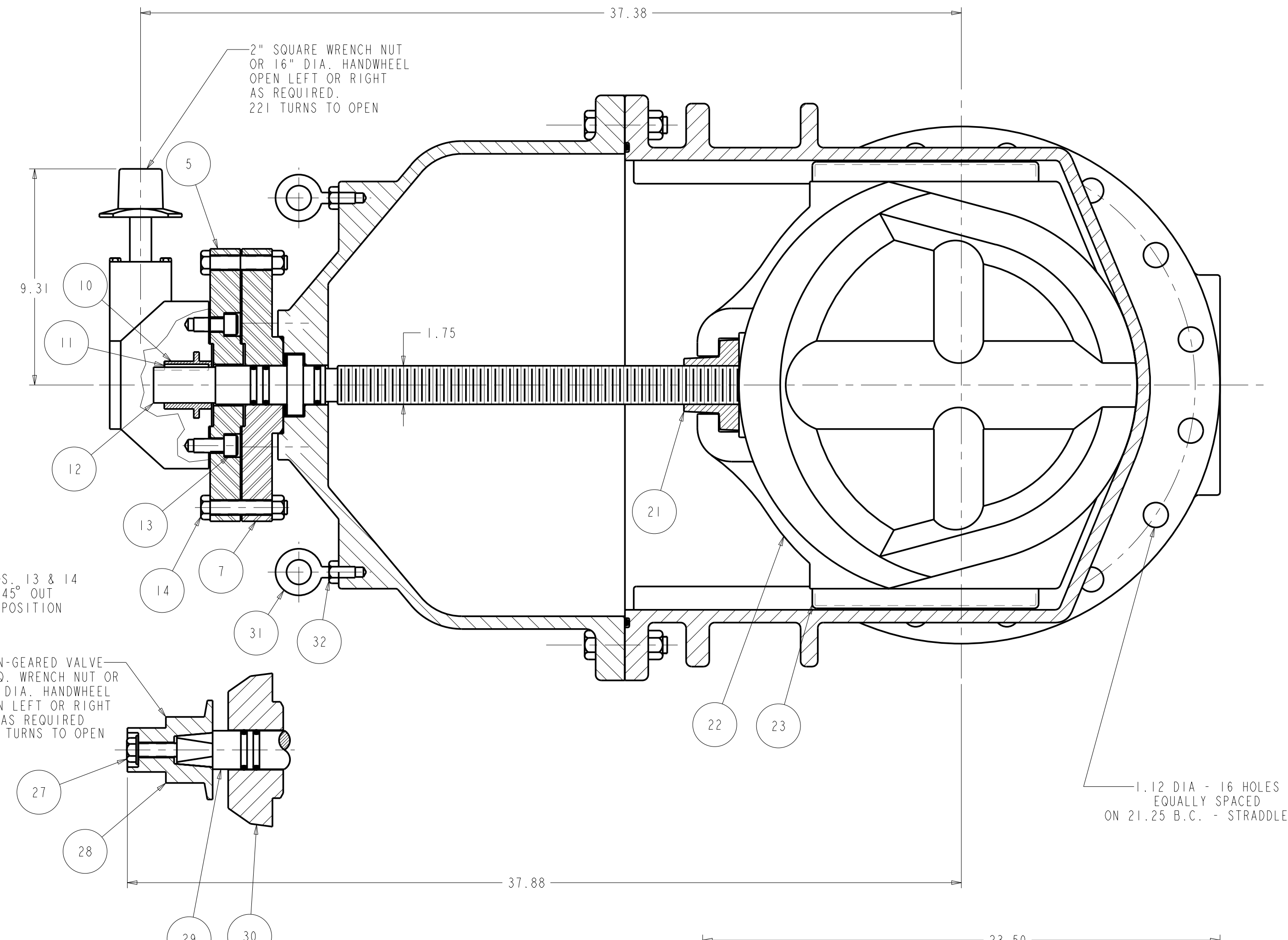
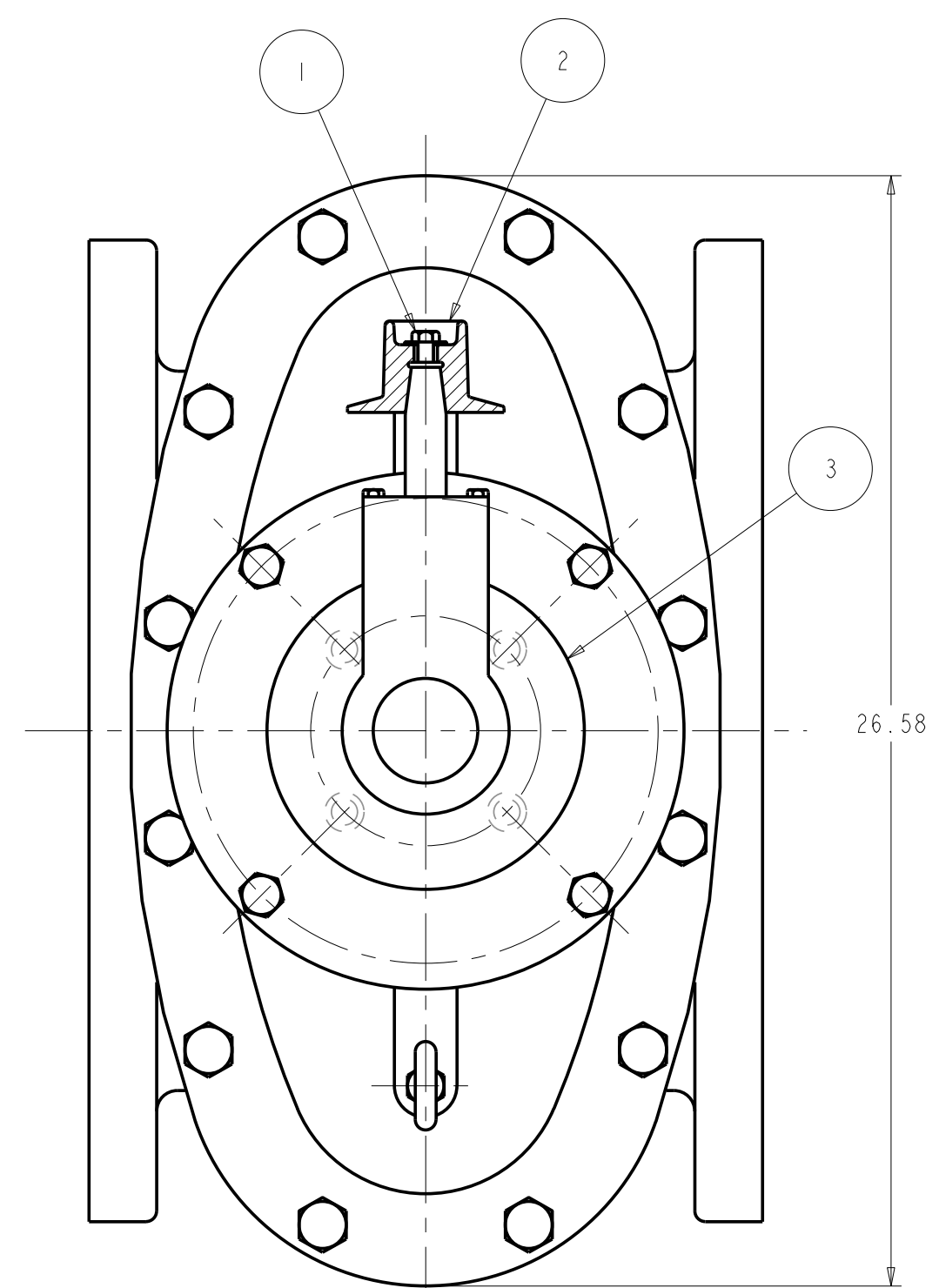
\* SUPPLIED W/ACTUATOR BUT FINISHED BY FOUNDRY

\*\* ASTM B138 ALLOY 675 W/ADDED LEAD FOR MACHINABILITY

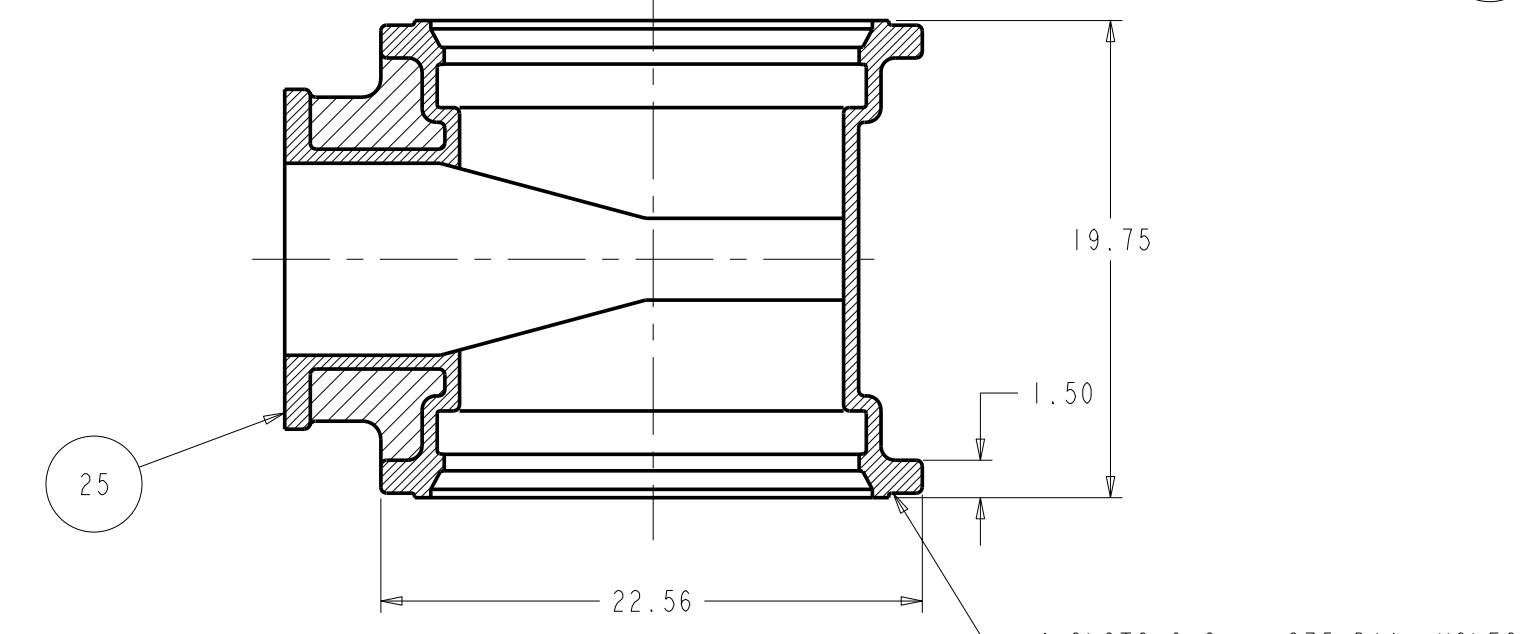
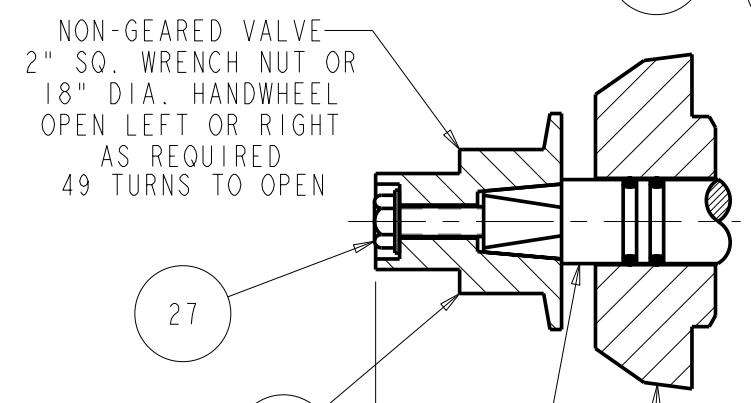
\*\*\* RUBBER ENCAPSULATED DUCTILE IRON DISC  
DUCTILE IRON - ASTM A536 (65-45-12)  
RUBBER - RUBBER SPEC R88

SR BY	CHKD	ENGR	MR	MFG	TOOL	DRY	DATE	UNLESS OTHERWISE NOTED	BREAK CAST CORNERS!	BREAK MACH CORNERS!	TOLERANCES	UNLESS OTHERWISE NOTED	LINEAR	ANGULAR	THIRD ANGLE PROJECTION	C.D. NO.	PART. NO.
ECO	PSG	RWV					11/07/05										
MAT'L NOTED													STR. NO.				

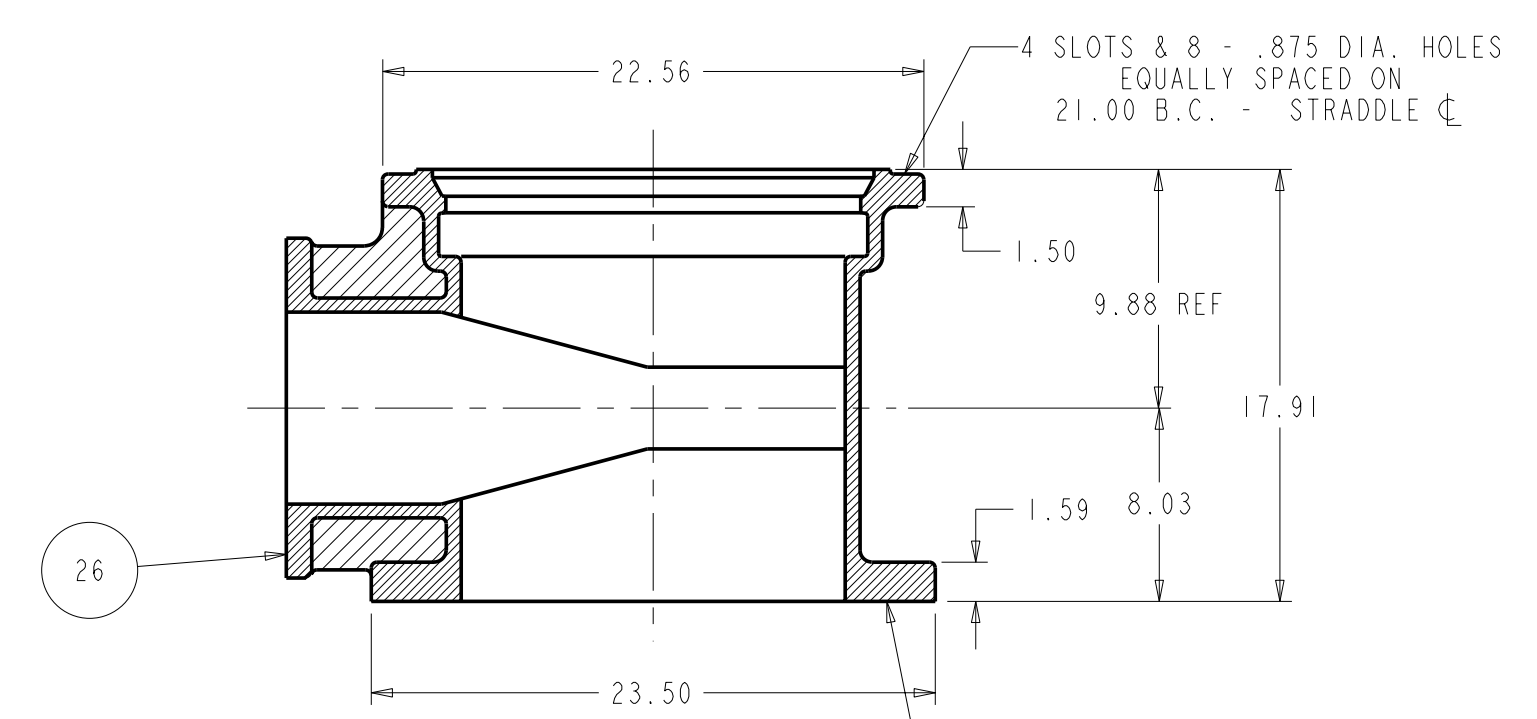
UNITED STATES PIPE AND FOUNDRY CO.	CHATTANOOGA, TENNESSEE	DESER.	16" RWGV FLG. ENDS FLG. X M. J. ENDS, & M. J. X M. J. ENDS W/ OR W/OUT BEVEL GEARING	NUMBER
				U6637



NOTE:  
ITEMS NOS. 13 & 14  
ROTATED 45° OUT  
OF TRUE POSITION



MECH. JOINT BODY  
SCALE: .125 : 1.000



FLANGE X MECH. JOINT BODY  
SCALE: .125 : 1.000

U6637

ECO 1370783  
ADDED HEX NUT  
ROW TO TABLE  
GPD 11/23/05