

PARTS LIST - GEARED VALVE

ITEM	DESCRIPTION	REQ'D	MATERIAL	ASTM	
1	CAP SCREW	1	STEEL	A307	GRADE B ZINC PLATED
2	WRENCH NUT	1	CAST IRON	A126	CLASS B
3	VALVE ACTUATOR	1			
4	ACTUATOR GASKET	1	NEOPRENE	D2000	R51
5	ADAPTER	1	STEEL	A36	
6	STUFFING BOX GASKET	1	NEOPRENE	D2000	R51
7	STUFFING BOX	1	STEEL	A36	
8	HEX HEAD BOLT & NUT	2	STEEL	A307	GRADE B ZINC PLATED
10	DRIVE SLEEVE	1	*		
11	KEY	1	STEEL		
12	STEM	1	BRONZE	**	
13	SOCKET HD. CAP SCREW	4	STEEL	A307	GRADE B ZINC PLATED
14	HEX HEAD BOLT & NUT	4	STEEL	A307	GRADE B ZINC PLATED
15	"O" RING	3	RUBBER	D2000	R34
16	"O" RING	1	RUBBER	D2000	R34
17	ANTI-FRICTION WASHER	2	BRASS		
18	BONNET	1	DUCTILE IRON	A536	64-45-12
19	Ⓐ HEX BOLT HEX NUT	10 10	STEEL STEEL	J429 F593	304SS 304SS
20	"O" RING	1	RUBBER	D2000	R34
21	DISC NUT	1	BRONZE	B62	
22	DISC	1	***		
23	GUIDE CAP	2	CELCON		M90
24	FLG X FLG BODY	1	DUCTILE IRON	A536	65-45-12
25	MJ X MJ BODY	1	DUCTILE IRON	A536	65-45-12
26	FLG X MJ BODY	1	DUCTILE IRON	A536	65-45-12
31	EYE BOLT	2	STEEL		ANSI B18.15
32	HEX NUT	2	STEEL	A307	ANSI B18.15

PARTS LIST NON-GEARED VALVE

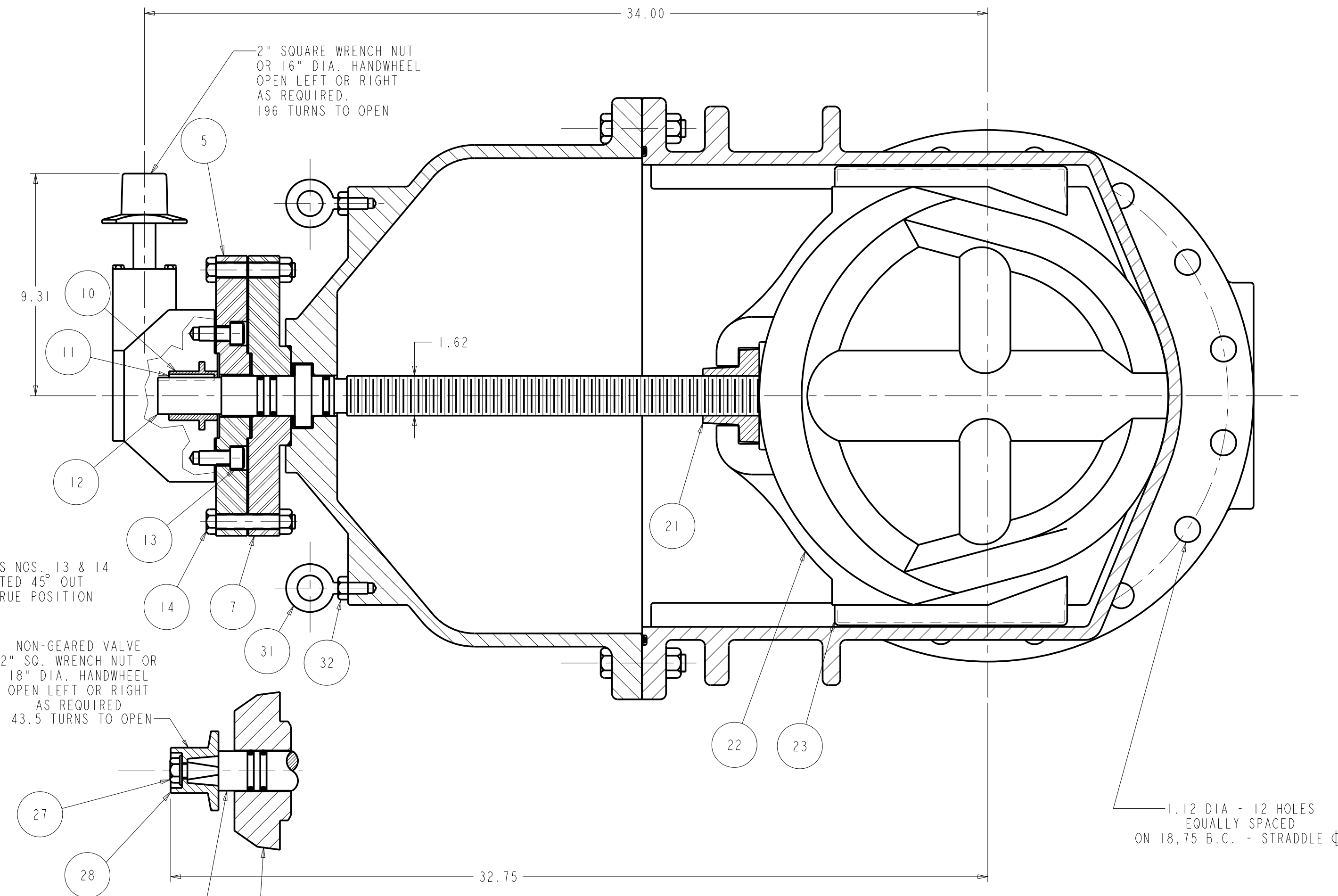
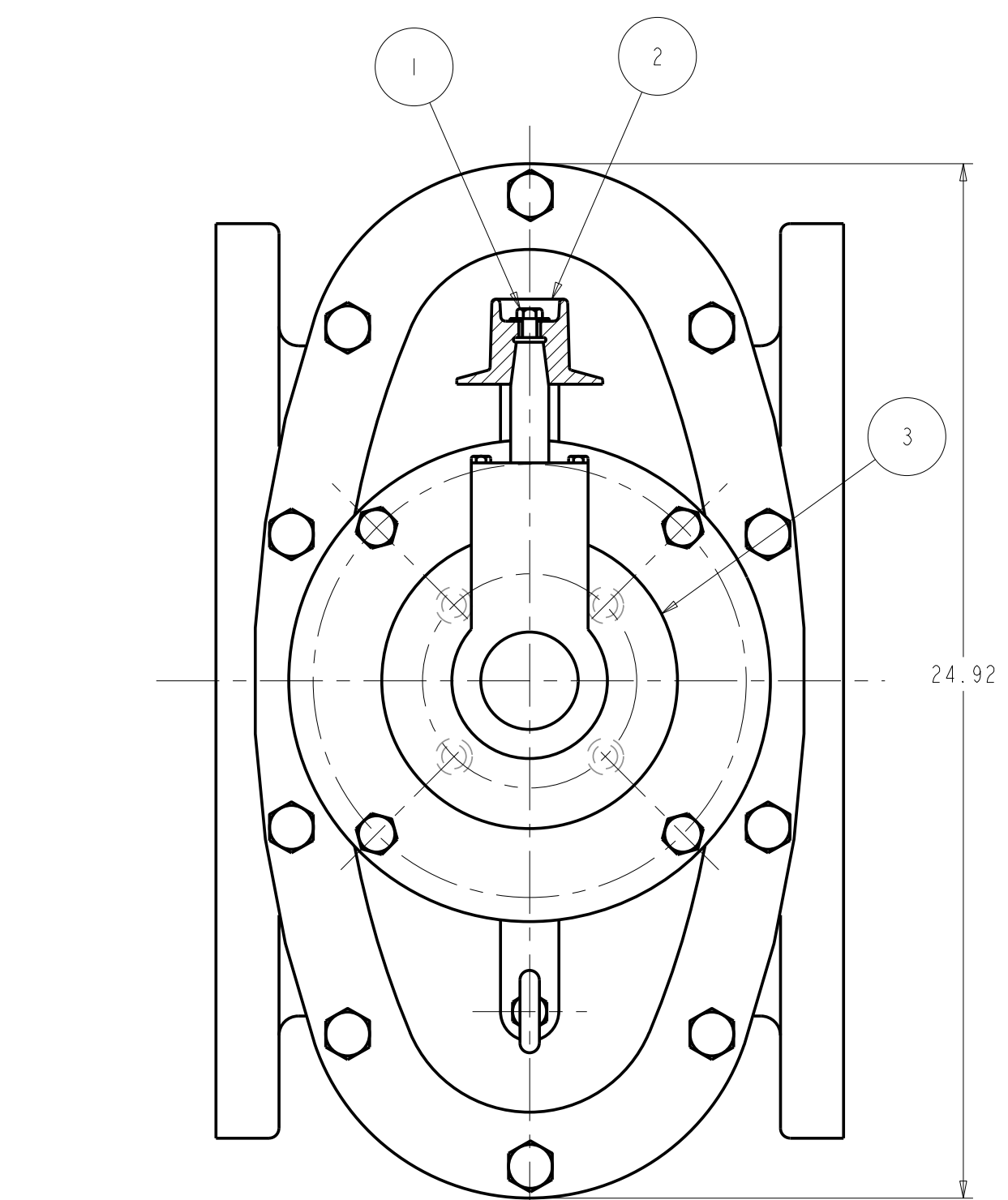
ITEM	DESCRIPTION	REQ'D	MATERIAL	ASTM	
27	CAP SCREW	1	STEEL	A307	GRADE B ZINC PLATED
28	WRENCH NUT	1	CAST IRON	A126	CLASS B
29	STEM	1	BRONZE	*	
30	STUFFING BOX	1	DUCTILE IRON	A536	65-45-12

NOTE:
ITEM NOS. 27 - 30 REPLACE ITEMS NOS. 1 - 7 & 9 - 14 FOR NON-GEARED VALVE.

* SUPPLIED W/ACTUATOR BUT FINISHED BY FOUNDRY.

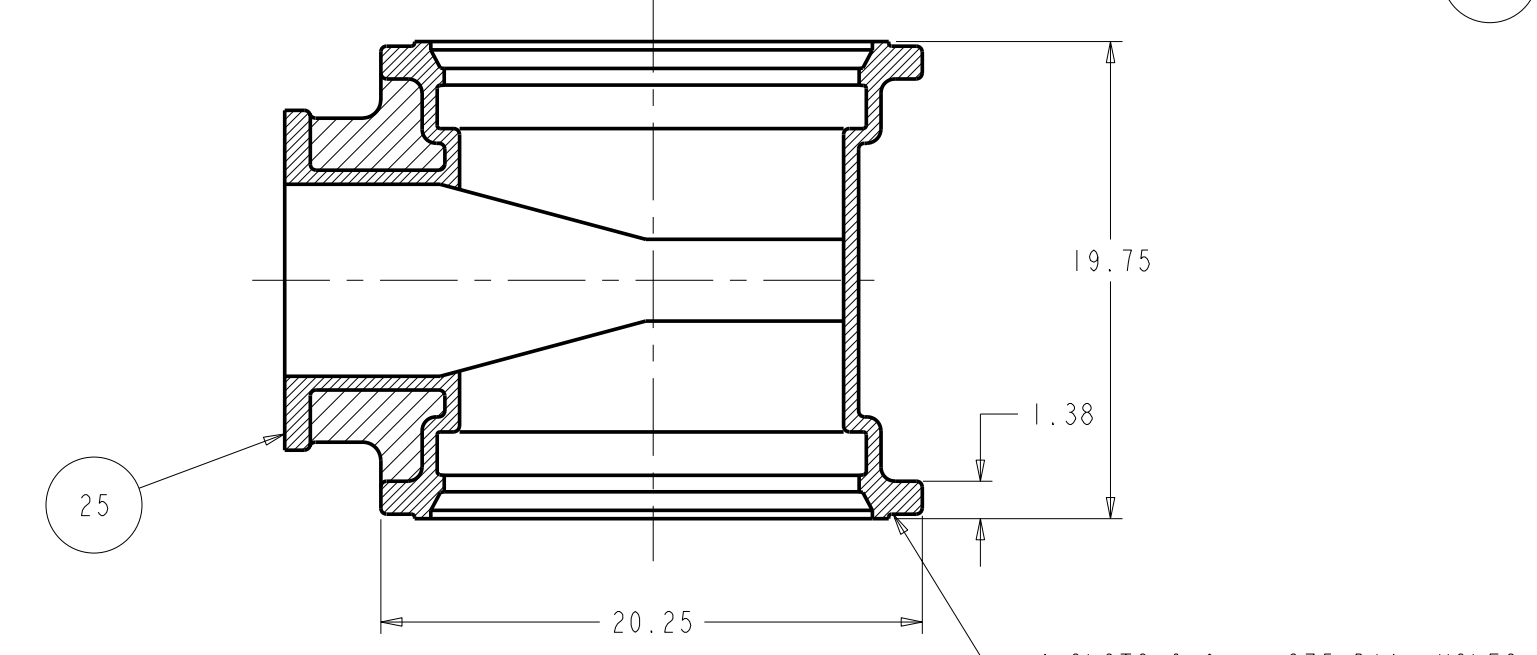
** ASTM B138 ALLOY 675 W/ADDED LEAD FOR MACHINABILITY

*** RUBBER ENCAPSULATED DUCTILE IRON DISC
DUCTILE IRON - ASTM A536 (65-45-12)
RUBBER - RUBBER SPEC R88



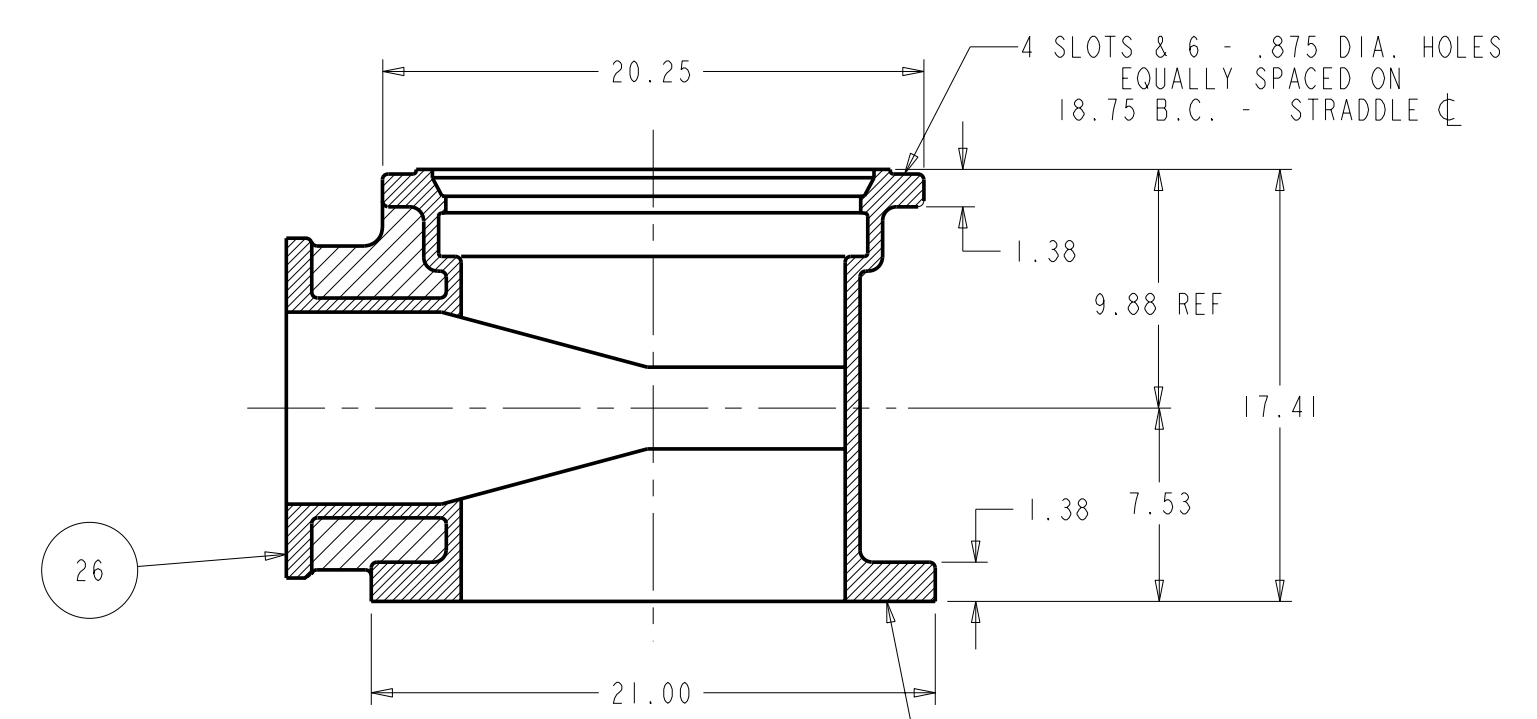
NOTE
ITEMS NOS. 13 & 14
ROTATED 45° OUT
OF TRUE POSITION

NON-GEARED VALVE
2" SQ. WRENCH NUT OR
18" DIA. HANDWHEEL
OPEN LEFT OR RIGHT
AS REQUIRED
43.5 TURNS TO OPEN



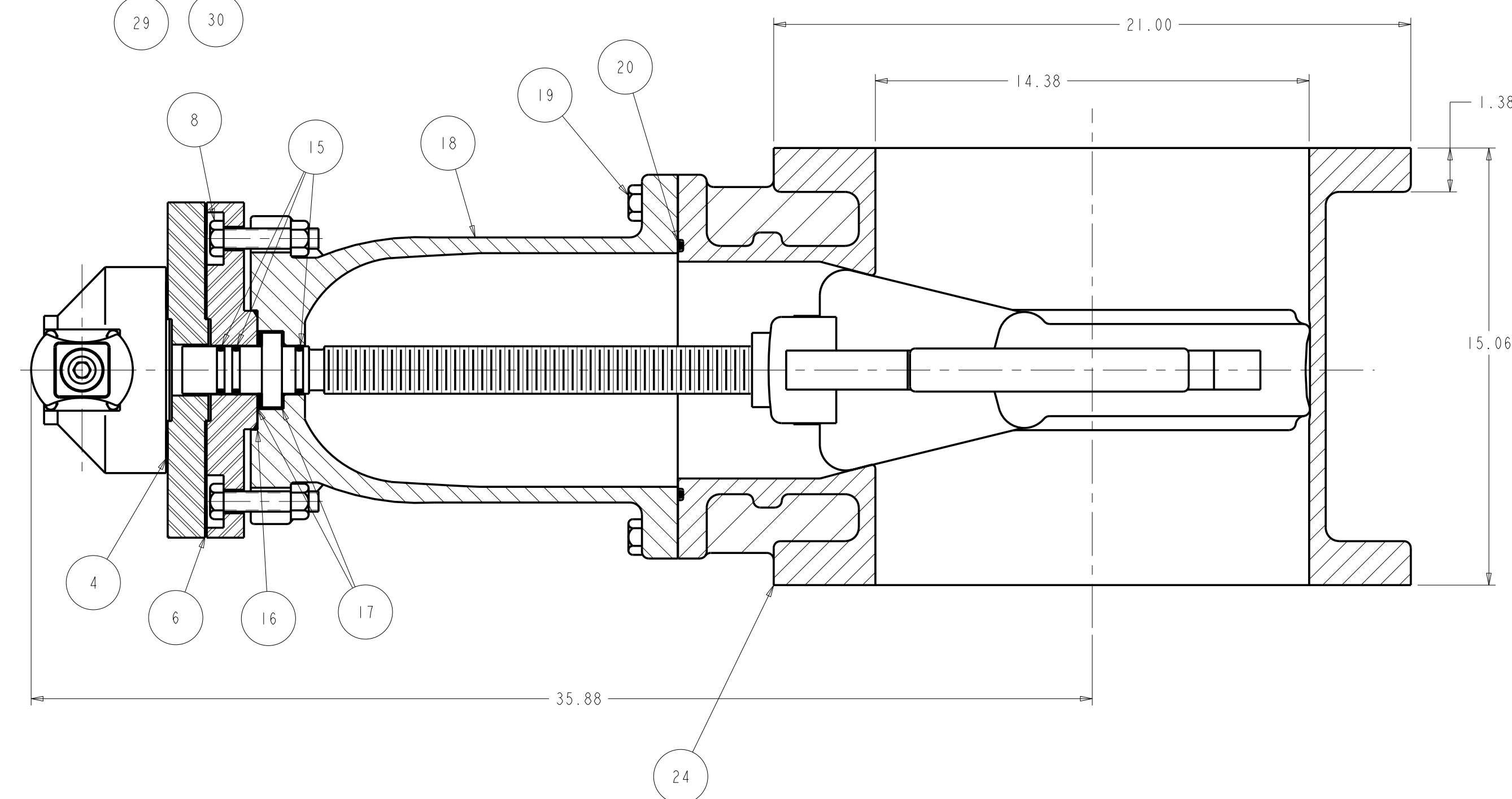
MECH. JOINT BODY

4 SLOTS & 6 - .875 DIA. HOLES
EQUALLY SPACED ON
18.75 B.C. - STRADDLE



FLANGE X MECH. JOINT BODY

4 SLOTS & 6 - .875 DIA. HOLES
EQUALLY SPACED ON
18.75 B.C. - STRADDLE



ECO 1370687
ADDED HEX NUT
TO TABLE
GPD 11/23/05

DR BY	CAP	11/09/05	UNLESS OTHERWISE NOTED	THIRD ANGLE PROJECTION	C.D. NO.
CHKD	PSG	11/09/05	BREAK CAST CORNERS!		PART. NO.
ENGR	RWV	11/09/05	BREAK MACH CORNERS!		
MFR			TOLERANCES	PURCH.	FINISH
MFG			UNLESS OTHERWISE NOTED	NO	ASSY
TOOL			ANGULAR	REF. NO.	SCALE
FBY			L INEAR ±	NONE	STR. NO.
MAT'L			NOTED		
UNITED STATES PIPE AND FOUNDRY CO. CHATTANOOGA TENNESSEE			DESER.	14" RWGV FLG. ENDS FLG. X M. J. ENDS, & M. J. X M. J. ENDS W/ OR W/OUT BEVEL GEARING	
				NUMBER U6661	

U6661