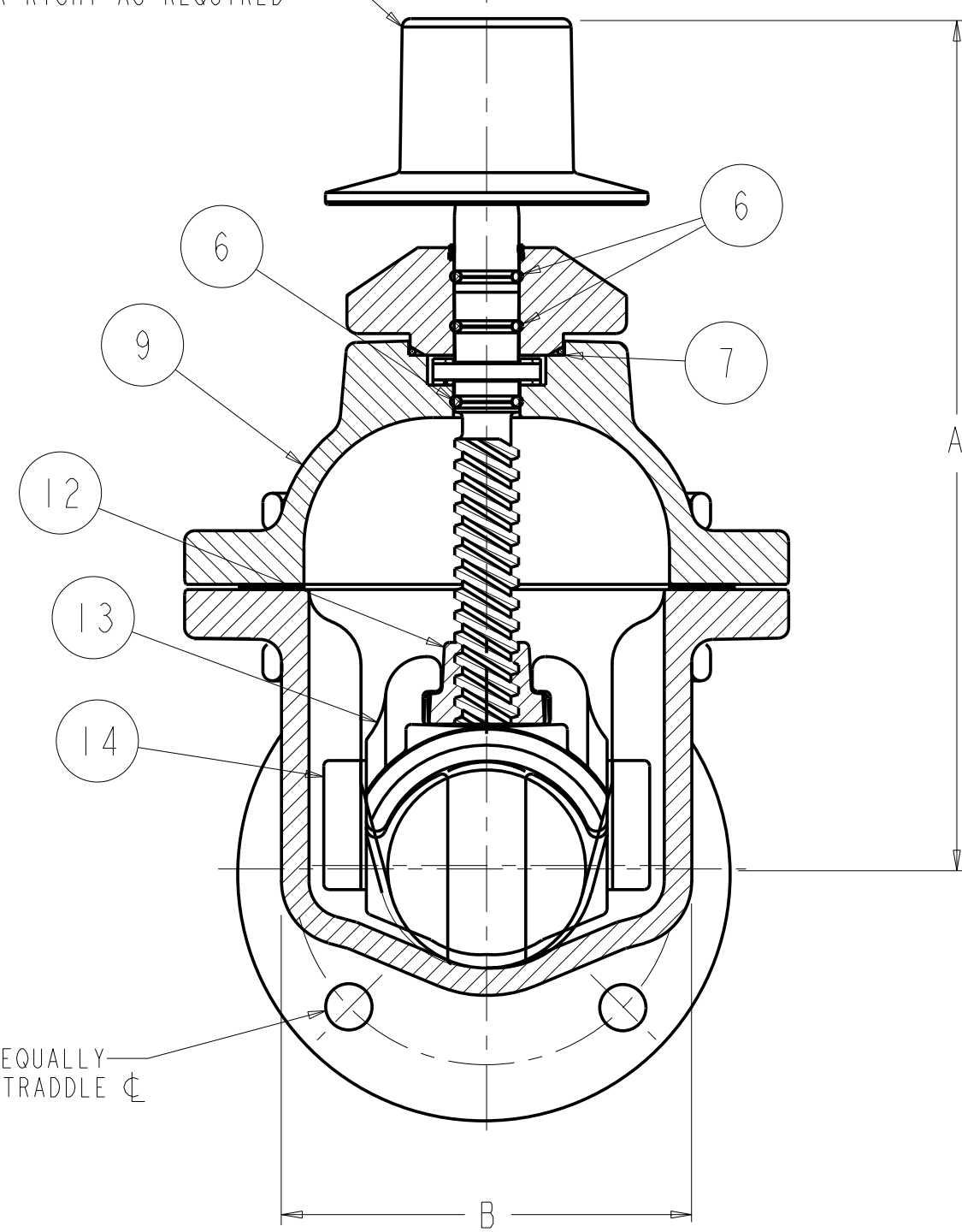
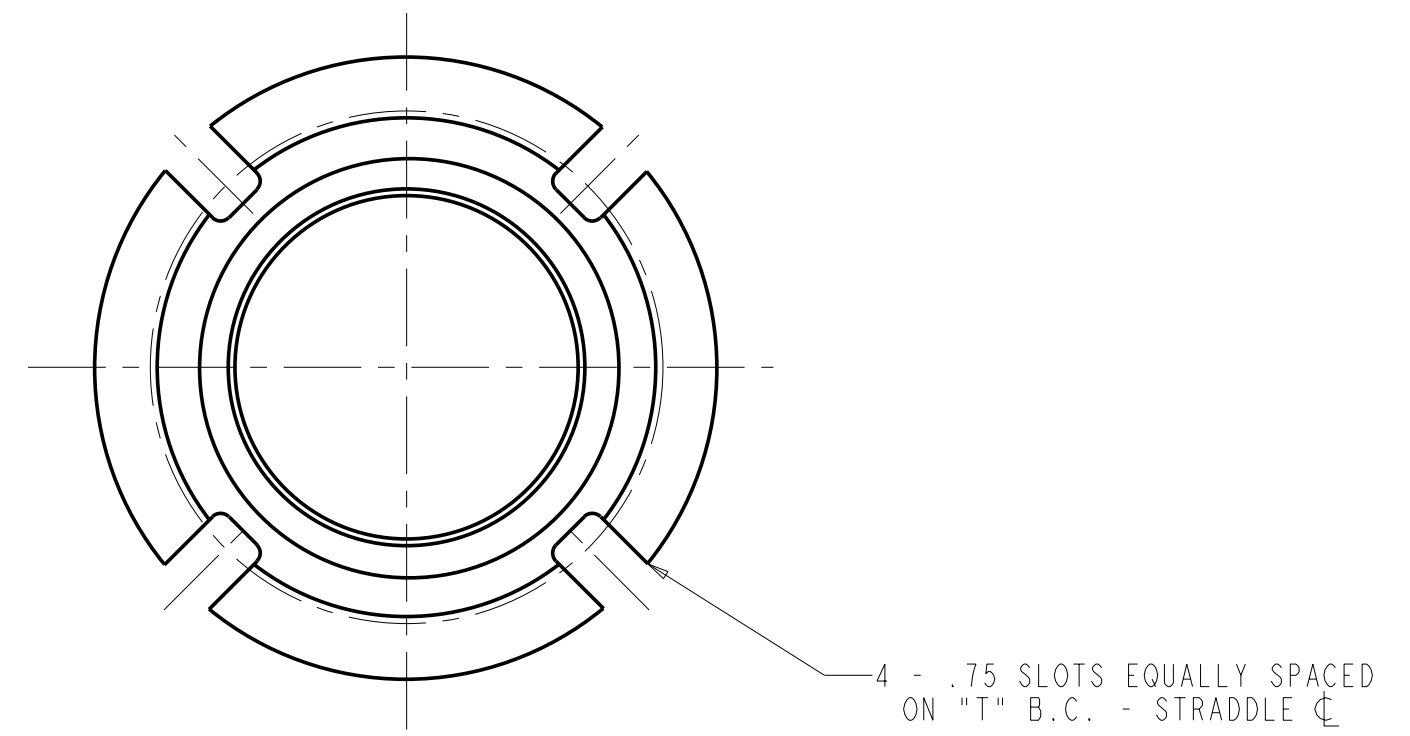
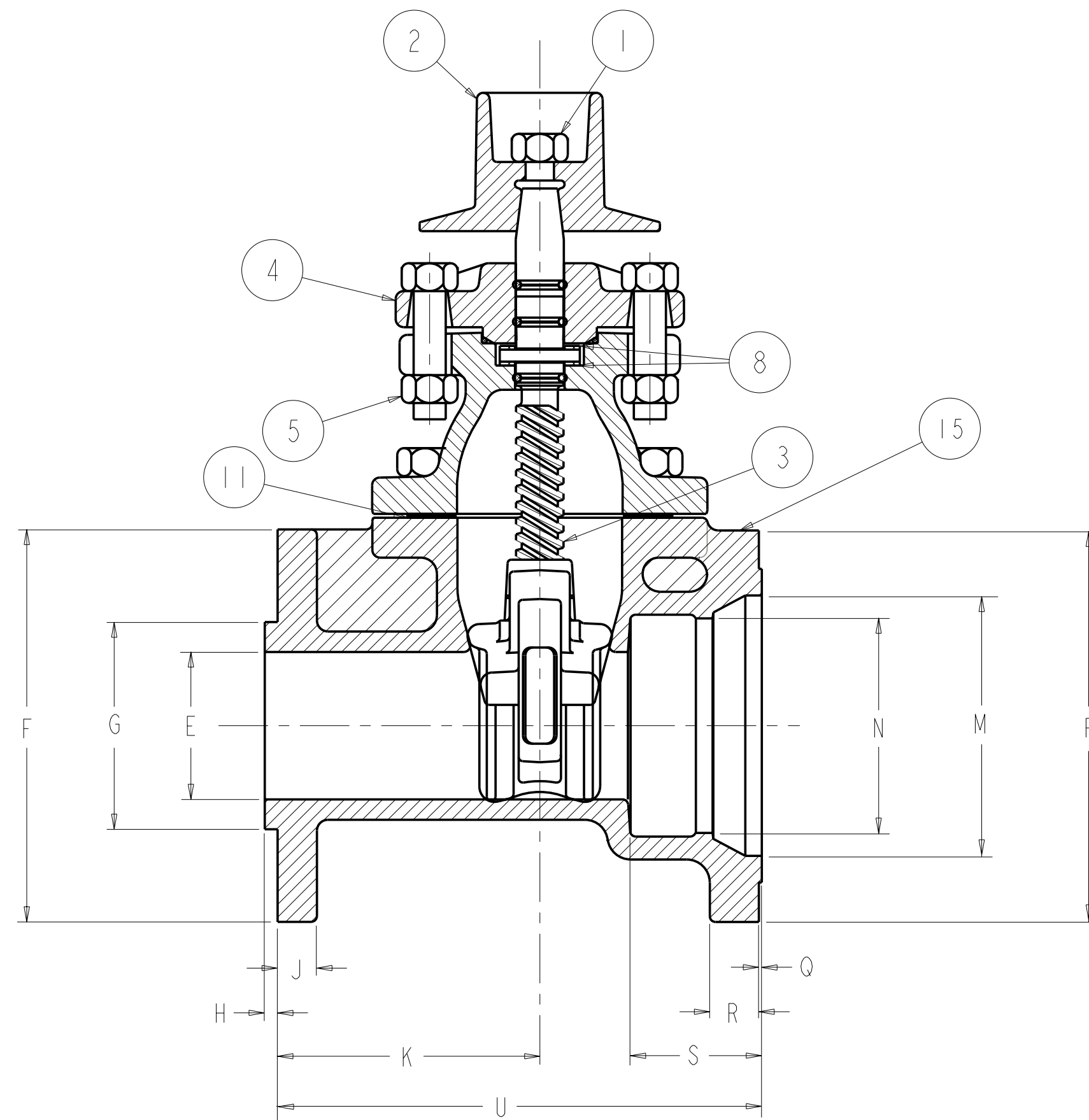


2" SQUARE WRENCH NUT OR "D" DIA HANDWHEEL  
OPEN LEFT OR RIGHT AS REQUIRED



4 - .75 DIA. HOLES EQUALLY  
SPACED ON "L" B.C. - STRADDLE  $\phi$



4 - .75 SLOTS EQUALLY SPACED  
ON "T" B.C. - STRADDLE  $\phi$

PART LIST					
ITEM	DESCRIPTION	REQ'D	MATERIAL	ASTM	
1	CAP SCREW	1	304 STAINLESS STEEL	A193	GRADE B8
2	WRENCH NUT	1	CAST IRON	A126	CLASS B
3	STEM	1	BRONZE	B138	ALLOY C67600
4	STUFFING BOX	1	CAST IRON	A126	CLASS B
5	STUFFING BOX BOLT STUFFING BOX NUT	2	304 STAINLESS STEEL 304 STAINLESS STEEL	A193 F594	GRADE B8 GROUP 1
6	O-RING	3	RUBBER	D2000	NITIRLE
7	O-RING	1	RUBBER	D2000	NITIRLE
8	ANTI-FRICTION WASHER	2	CELCON		
9	BONNET	1	CAST IRON	A126	CLASS B
10	BONNET BOLT BONNET NUT	"V"	304 STAINLESS STEEL 304 STAINLESS STEEL	A193 F594	GRADE B8 GROUP 1
11	BONNET GASKET	1	RUBBER	D2000	NEOPRENE
12	DISC NUT	1	BRONZE	B62	ALLOY C83600 <sup>(A)</sup>
13	DISC	1	"*"		
14	GUIDE CAP	2	CELCON		
15	BODY	1	CAST IRON	A126	CLASS B

\* RUBBER ENCAPSULATED CAST IRON DISC  
CAST IRON - ASTM A126 - CLASS B  
RUBBER - SBR - ASTM D2000

DIMENSIONS FOR MUELLER RESILIENT WEDGE TAPPING VALVE (this drawing only)

SIZE	A	B	C	D	E	F	G	H	J	K	L	M	N	P	Q	R	S	T	U	V	TURN TO OPEN
2	9.88	4.77	7.02	6.00	2.30	6.00	2.97	.16	.69	4.36	4.75	3.50	2.62	6.25	.06	.81	2.29	4.75	8.40	4	8
3	12.38	6.01	8.63	8.00	3.30	7.50	3.97	.19	.75	4.56	6.00	5.00	4.10	7.50	.06	.94	2.56	6.19	8.81	6	11

DR BY: CAP	1/11/05	UNLESS OTHERWISE NOTED	THIRD ANGLE PROJECTION	C.D. NO.
CHKD: PSC	1/11/05	BREAK CAST CORNERS!		PART. NO.
ENGR: RWV	1/11/05	BREAK MACH CORNERS!		
MFR:		TOLERANCES	PURCH: NO	FINISH: ASSY
MFG:		UNLESS OTHERWISE NOTED	REF. NO.	SCALE: NONE
TOOL:		LINEAR	ANGULAR	STR. NO.
FDRT:		±	±	
MAT'L: NOTED				
UNITED STATES PIPE AND FOUNDRY CO. CHATTANOOGA TENNESSEE		DESCR: 2" & 3" RWTV - T2360		NUMBER U6689

U6689

ECO 136632