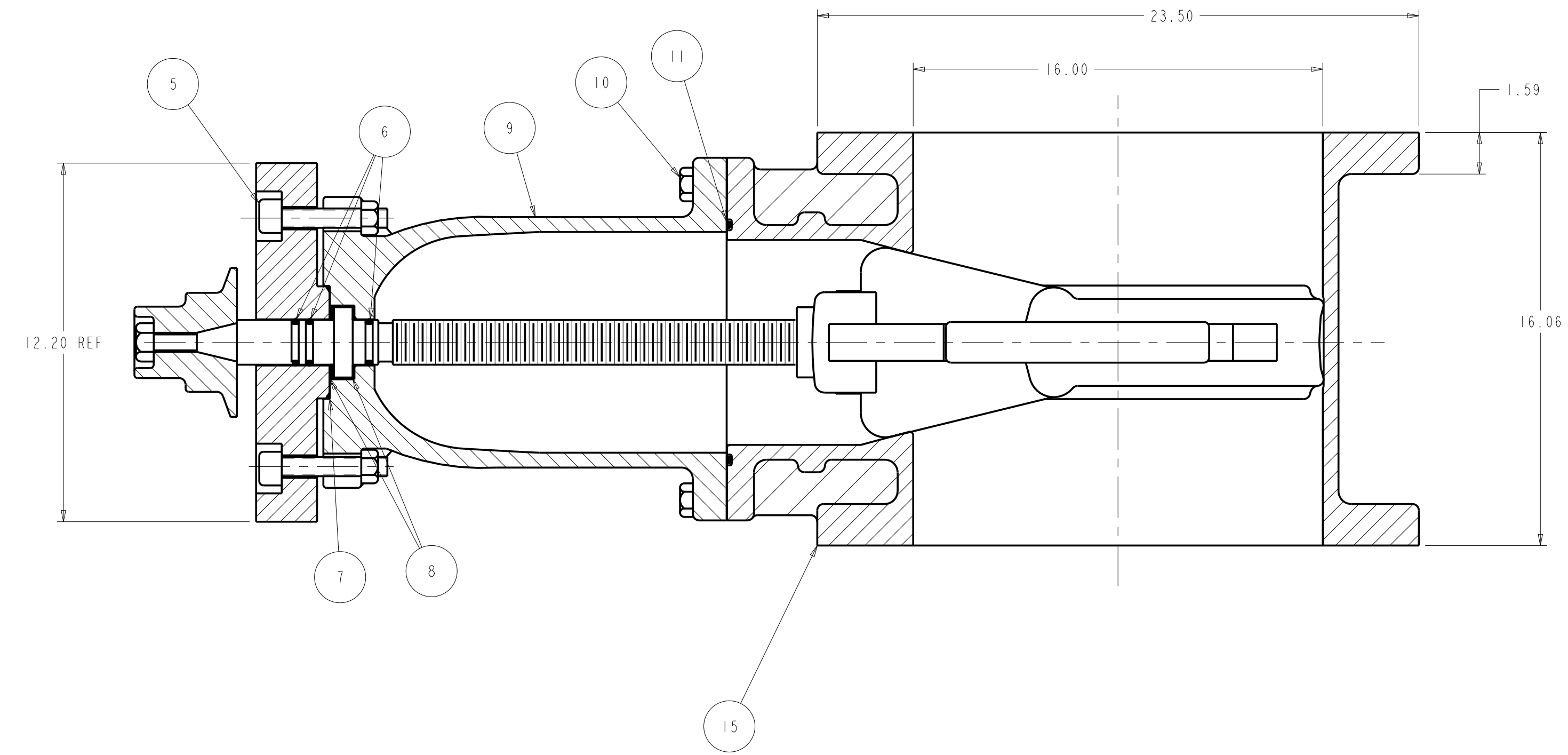
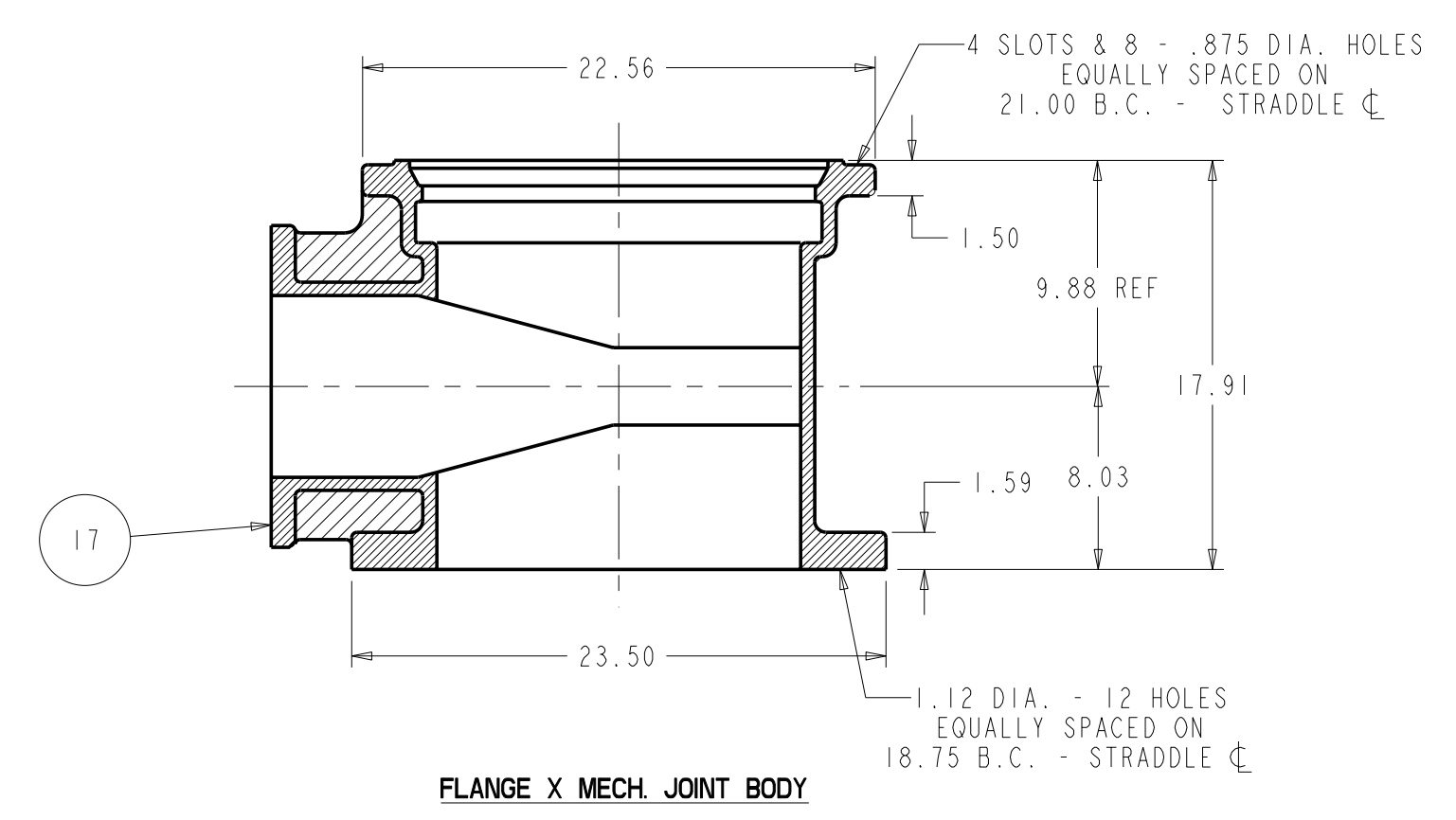
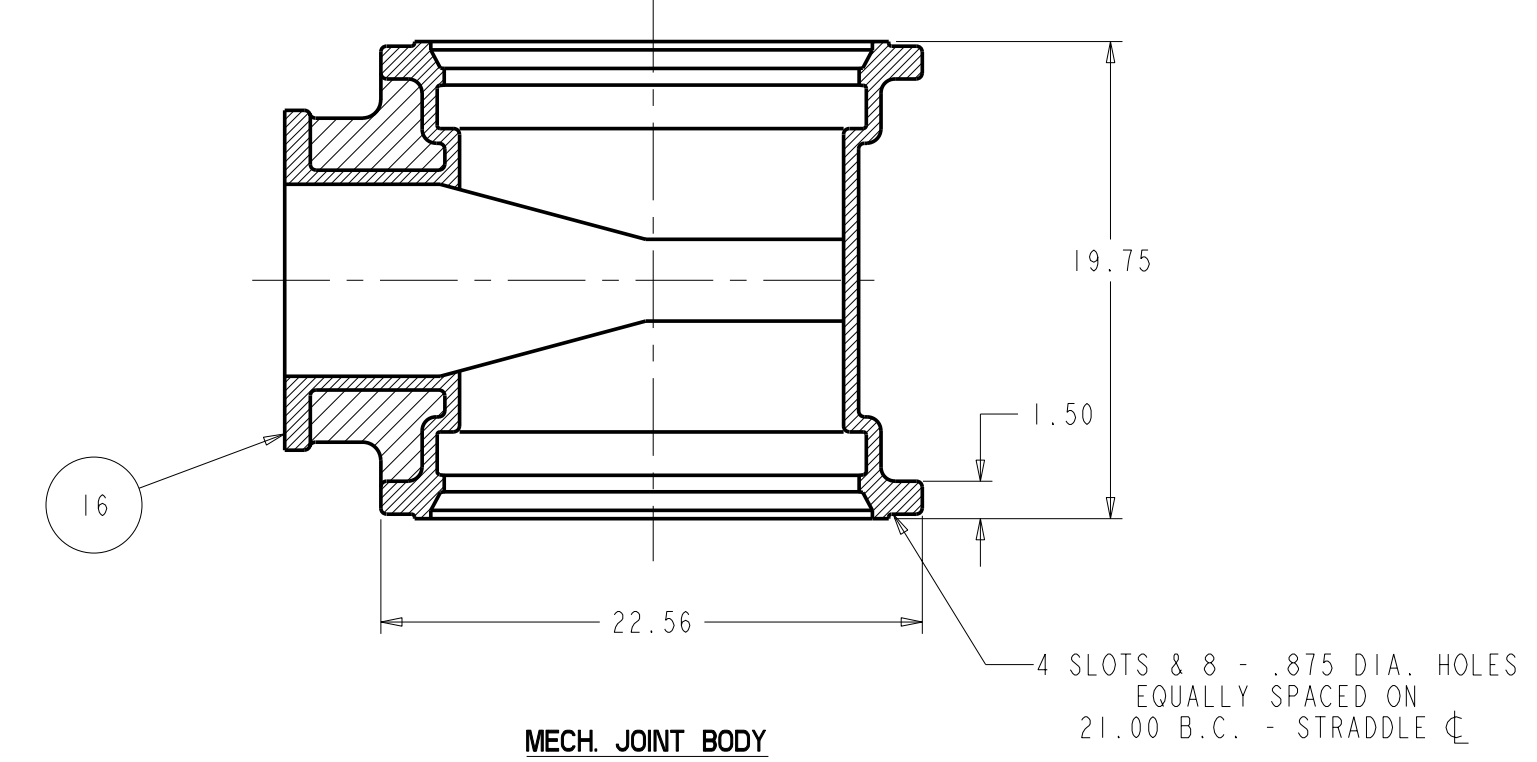
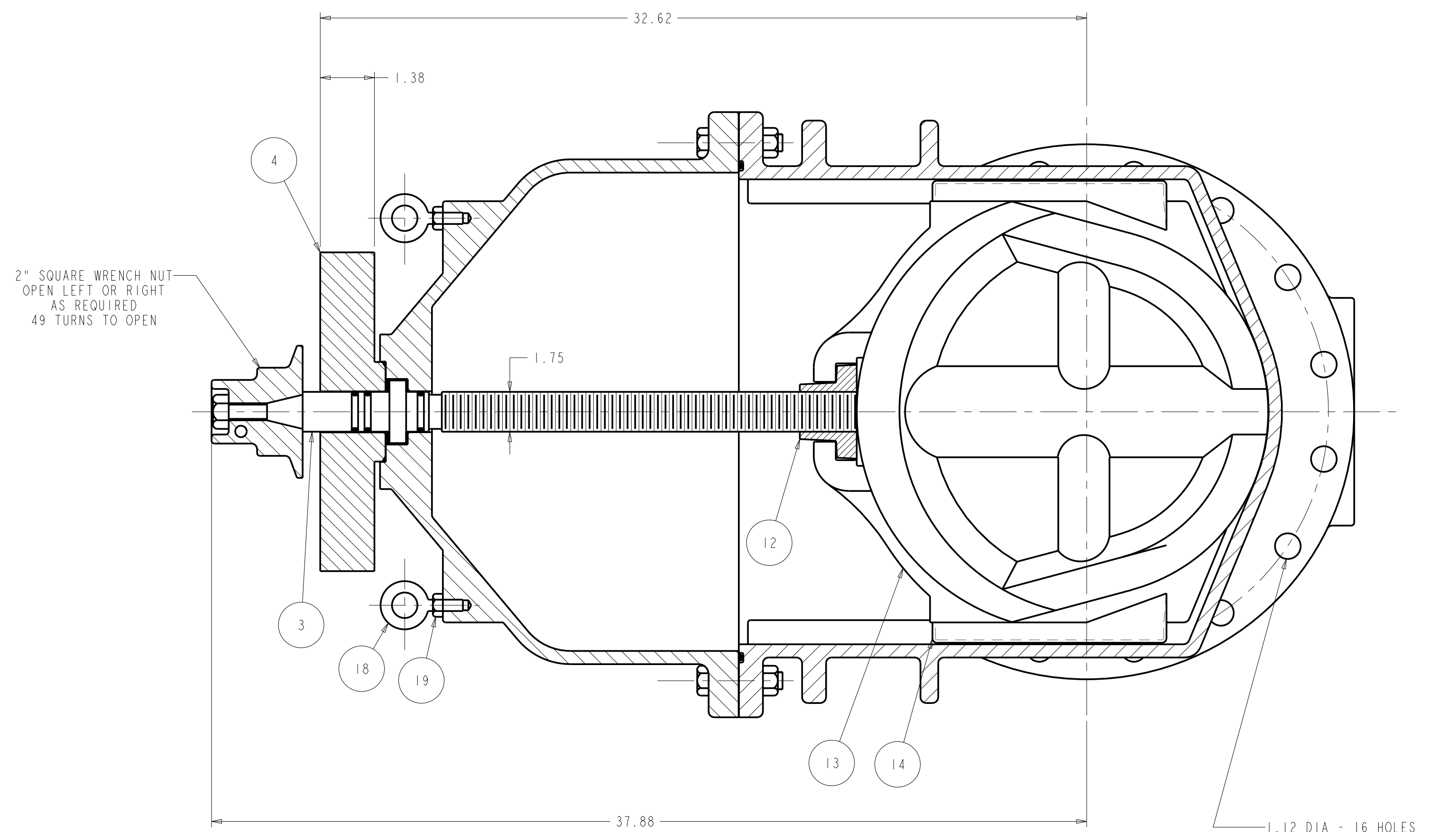
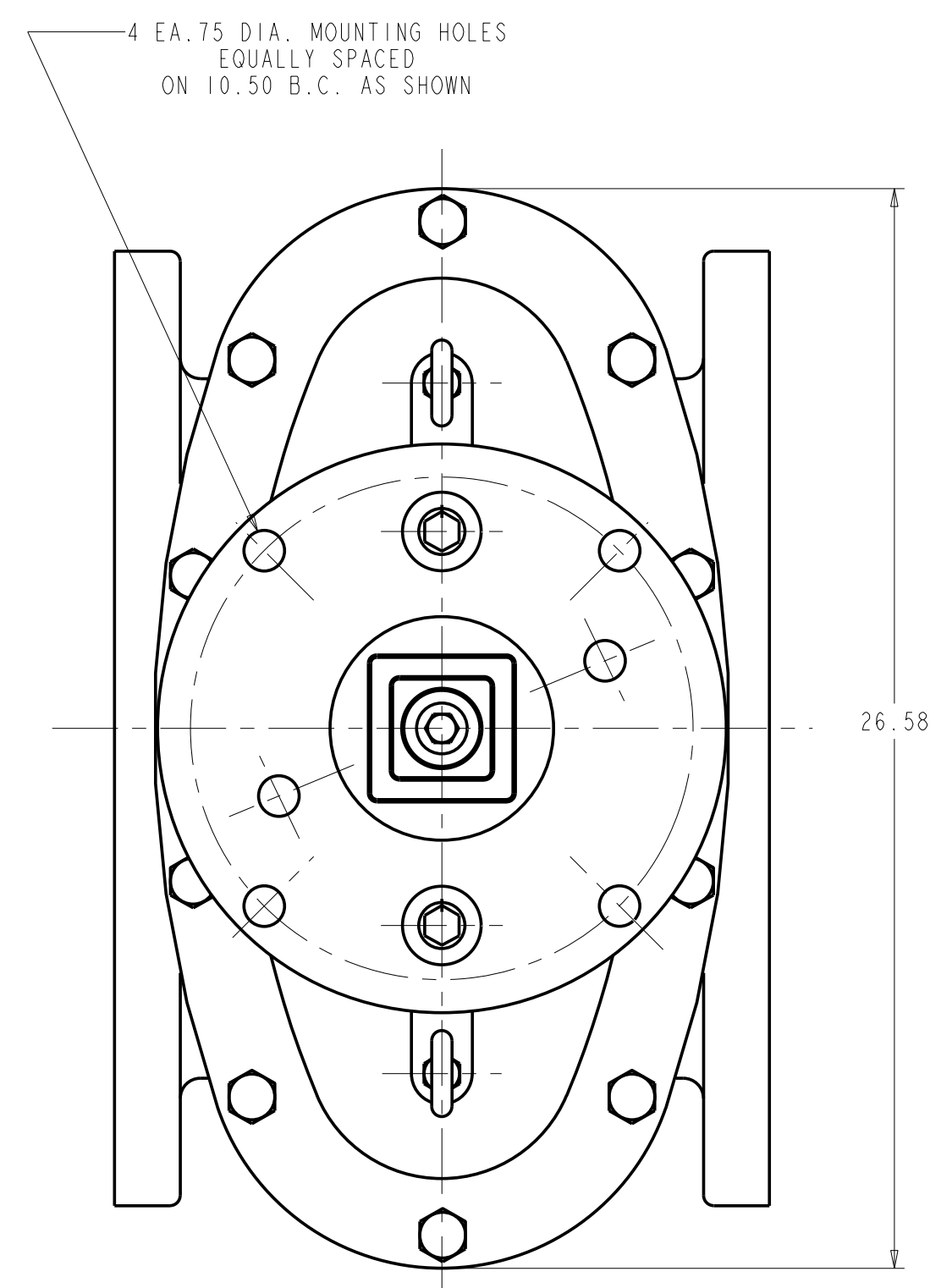


16" PUSP1 RESILIENT WEDGE GATE VALVE - FLANGE X FLANGE ENDS - FLANGE X MECH. JOINT ENDS, & MECH. JOINT X MECH. JOINT ENDS



PARTS LIST - GEARED VALVE

ITEM	DESCRIPTION	REQ'D	MATERIAL	ASTM	
1	CAP SCREW	1	STEEL	A307	GRADE B ZINC PLATED
2	WRENCH NUT	1	CAST IRON	A126	CLASS B
3	STEM	1	BRONZE	*	
4	STUFFING BOX	1	DUCTILE IRON	A536	GRADE 64-45-12
5	SOCKET HEAD BOLT	2	STEEL	A307	GRADE 5 ZINC PLATED
6	"O" RING	3	RUBBER	D2000	R34
7	"O" RING	1	RUBBER	D2000	R34
8	ANTI-FRICTION WASHER	2	BRASS		
9	BONNET	1	DUCTILE IRON	A536	GRADE 65-45-12
10	(A) HEX BOLT HEX NUT	12 12	STEEL STEEL	J429 F593	GRADE B ZINC PLATED GRADE B ZINC PLATED
11	"O" RING	1	RUBBER	D2000	R34
12	DISC NUT	1	BRONZE	B62	
13	DISC	1	**		
14	GUIDE CAP	2	CELCON		M90
15	FLG X FLG BODY	1	DUCTILE IRON	A536	GRADE 65-45-12
16	MJ X MJ BODY	1	DUCTILE IRON	A536	GRADE 65-45-12
17	FLG X MJ BODY	1	DUCTILE IRON	A536	GRADE 65-45-12
18	EYE BOLT	2	STEEL		ANSI B18.15
19	HEX NUT	2	STEEL		ANSI B18.15

* ASTM B138 ALLOY 675 W/ADDED LEAD FOR MACHINABILITY

** RUBBER ENCAPSULATED DUCTILE IRON DISC
DUCTILE IRON - ASTM A536 (65-45-12)
RUBBER - SPEC R88

ECO 1368743
ECO 1370724
ADDED HEX NUT
ROW TO TABLE
GPD 11/23/05

DR BY	CAP	11/14/05	UNLESS OTHERWISE NOTED	THIRD ANGLE PROJECTION	C.D. NO.
CHKD	PSG	11/14/05	BREAK CAST CORNERS!		PART. NO.
ENGR	RWV	11/14/05	BREAK MACH CORNERS!		
MFR			TOLERANCES	PURCH. NO.	FINISH
MFG			UNLESS OTHERWISE NOTED	REF. NO.	ASSY
TOOL			LINEAR	SCALE	NONE
FBY			ANGULAR	STR. NO.	
MATERIAL NOTED			NUMBER		
UNITED STATES PIPE AND FOUNDRY CO. CHATTANOOGA TENNESSEE			DESCR. 16" RWGV FLG. ENDS FLG. X M. J. ENDS, & M. J. X M. J. ENDS W/POST INDICATOR FLANGE		U6717