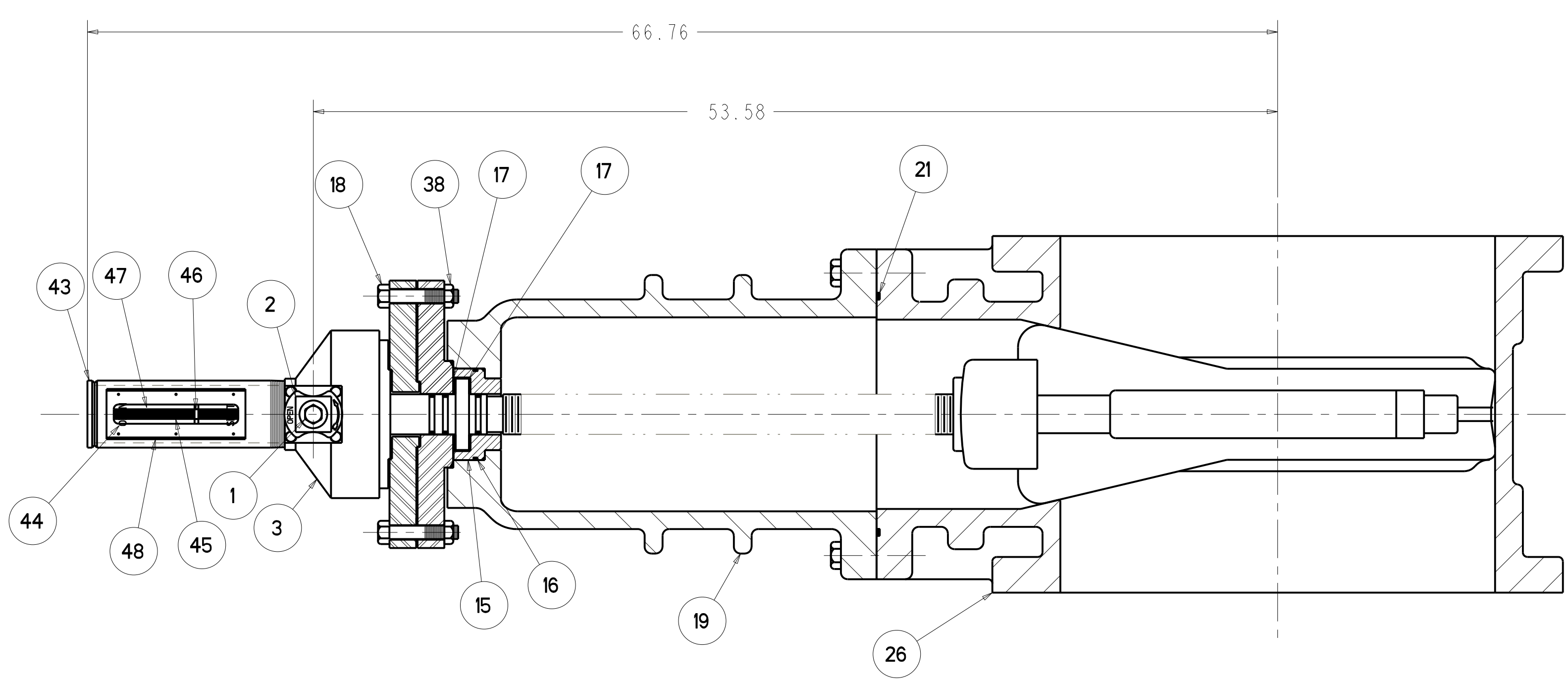
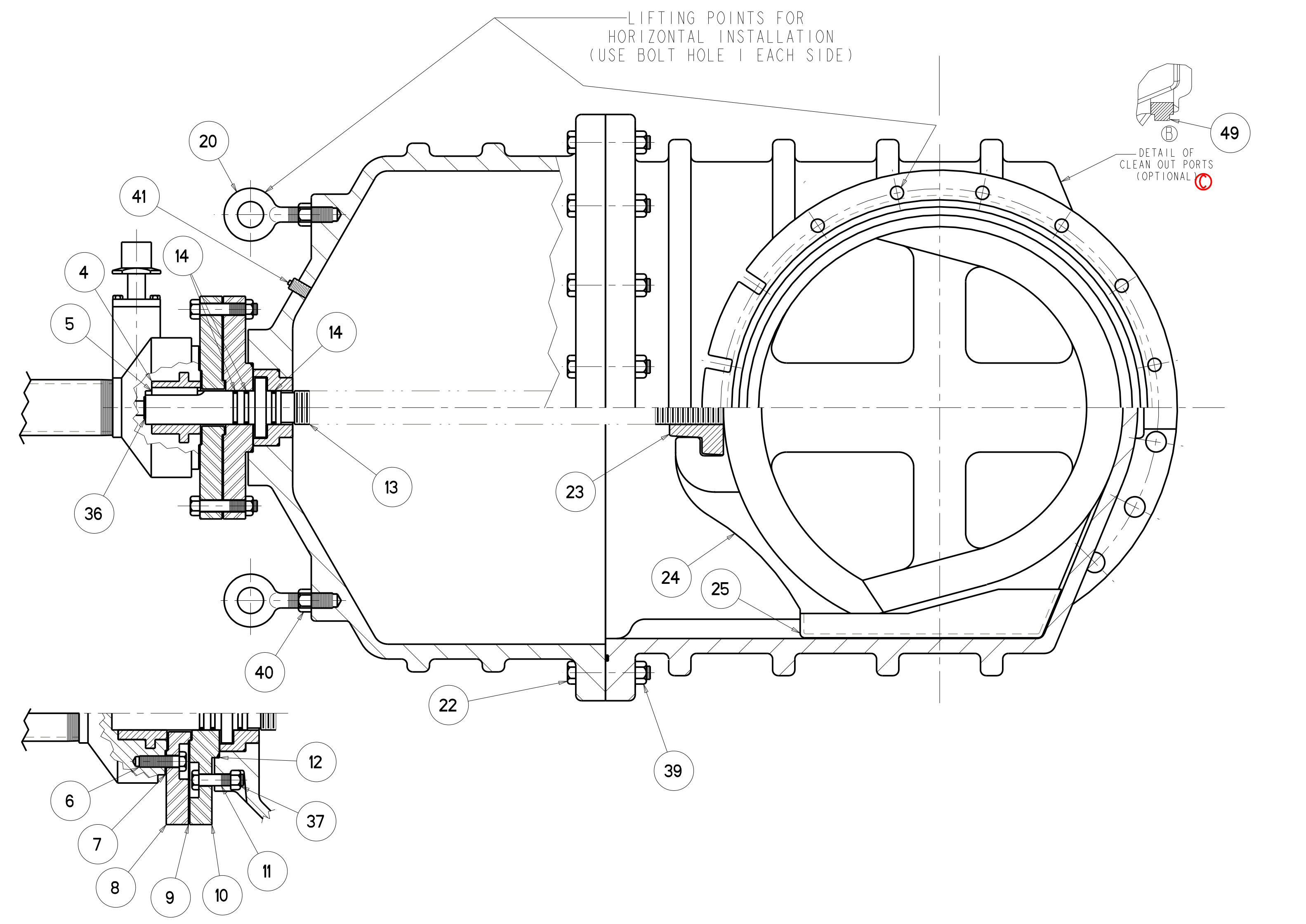




24" RWGV FLANGE ENDS - W/BEVEL GEARING - WITH POSITION INDICATOR



PARTS LIST - 240A236106LN102						
ITEM	DESCRIPTION	REQ'D	MATERIAL	ASTM	NOTES	
1	CAP SCREW 8mm X 30mm	1	STEEL		SEE NOTE 3	(A)
2	WRENCH NUT	1	CAST IRON (SEE NOTE 4)(B)	A126	CLASS B	
3	BEVEL GEAR UNIT	1	SEE NOTE 5	(B)		
4	STEM NUT	1	BRASS			
5	KEY 1/2" X 3 1/2"	1	STEEL	A108	GRADE 1018	
6	SOCKET HEAD SCREW 5/8" X 1 3/4"	4	STEEL		SEE NOTE 3	(A)
7	GASKET	1	RUBBER	D2000	R51	
8	ADAPTER	1	STEEL	A36		
9	O-RING 4 1/8" x 4 3/8" x 1/8" #243	1	RUBBER	D2000	EPDM	(A)
10	STUFFING BOX W/ SPUR GEARING	1	STEEL	A36		
11	SOCKET HEAD BOLT 3/4" X 2 3/4"	4	STEEL		SEE NOTE 3	(A)
12	O-RING 5 5/8" X 6" X 3/16" #358	1	RUBBER	D2000	EPDM	(A)
13	STEM	1	BRONZE	B584	C86400 OR C86500	(A)
14	O-RING 2 1/4" X 1 7/8" X 3/16" #328	3	RUBBER	D2000	EPDM	(A)
15	BONNET BUSHING	1	BRONZE	B62		
16	O-RING 4 7/8" X 5 1/8" X 1/8" #249	1	RUBBER	D2000	EPDM	(A)
17	WASHER	2	BRASS			
18	HEX BOLT 3/4" X 4"	4	STEEL	J429	SEE NOTE 3	(A)
19	BONNET	1	DUCTILE IRON	A536	GR. 65-45-12	
20	EYEBOLT 100"	2	STEEL		GALVANIZED	
21	O-RING	1	RUBBER	D2000	EPDM	(A)
22	HEX BOLT 7/8" X 5 1/2"	16	STEEL		SEE NOTE 3	(A)
23	DISC NUT	1	BRONZE	B62		
24	DISC	1			SEE NOTE 1	
25	GUIDE CAP	2	CELCON		M90	
26	BODY	1	DUCTILE IRON	A536	GR. 65-45-12	
36	HOLD-DOWN WASHER 5/8"	1	STEEL	A164	TYPE B	
37	HEAVY HEX NUT 3/4"	4	STEEL		SEE NOTE 3	(A)
38	HEX NUT 3/4"	4	STEEL		SEE NOTE 3	(A)
39	HEX NUT 7/8"	16	STEEL		SEE NOTE 3	(A)
40	HEAVY HEX NUT 100"	2	STEEL		SEE NOTE 3	(A)
41	SQUARE HEAD PIPE PLUG 1/4" - 18 NPT	1	304 STAINLESS STEEL	A193	GRADE B8	
42	84 X 40 PALLET	1	WOOD		NOT SHOWN	
43	HOUSING SUB ASSEMBLY	1	STEEL			
44	DECAL FOR POSITION INDICATOR	1				
45	INDICATING STEM 36" RWGV OL	1	BRONZE			
46	POINTER POSITION INDICATOR OL	1	BRONZE			
47	WINDOW	1	PLEXIGLASS OR LEXAN			
48	WINDOW GASKET	1	RUBBER	D200		
49	PIPE PLUG	2			SUPPLIED WHEN TAPPED	

- NOTES:
- (A) 1) RUBBER ENCAPSULATED DUCTILE IRON DISC  
RUBBER - EPDM ASTM D2000  
DUCTILE IRON ASTM A536 GRADE 65-45-12
  - 2) NUMBER OF TURNS TO FULLY CLOSED/OPEN 338
  - (A) 3) BOLTS - SAE J429 GRADE 2  
NUTS - ASTM A563 GRADE B  
FASTENERS - PLATED TO ASTM F1941 CLASS Fe/Zn 12C
  - (B) 4) MANUFACTURER'S OPTION TO UPGRADE MATERIAL TO DUCTILE IRON A536 GRADE 65-45-12
  - (B) 5) VALVE WILL BE FURNISHED WITH ONE OF THE LISTED OPERATORS AT THE MANUFACTURER'S DISCRETION  
MASTERGEAR A13, RATIO 4.5:1, TURNS TO OPEN 338  
ROTORK HOB414, RATIO 4:1, TURNS TO OPEN 300

ECO 1437319 CHANGED O-RING AND DISC MATERIAL TO EPDM  
ECO 1370423 ADDED NOTE REMOVED PRESSURE RATING CAP 01/03/07

ECO 1458136 ADDED NOTES 4 & 5  
ADDED DETAIL VIEW AND LARGER CAP 01/12/08

ECO 1511793 REMOVED NOTE "SIZES 24" AND LARGER H D 1/28/09

**APPROVED**  
By Nicholas Franklin at 3:25 pm, Aug 18, 2009

SR BY: CAP	11/18/05	UNLESS OTHERWISE NOTED	THIRD ANGLE PROJECTION	C.D. NO.
CHNG: PSG	11/18/05	BREAK CAST CORNERS!		
ENGR: RWV	11/18/05	BREAK MACH CORNERS!		
MFR:		TOLERANCES	PURCH: NO	FINISH: ASSY
MFG:		UNLESS OTHERWISE NOTED	REF. NO.	SCALE: NONE
TOOL:		LINEAR	ANGULAR	STR. NO.
FBRY:		±	±	
NOTED				
UNITED STATES PIPE AND FOUNDRY CO. CHATTANOOGA, TENNESSEE		DESCR: 24" FLANGE ENDS RWGV W/BEVEL GEARING & POSITION INDICATOR WITHOUT BTM BY-PASS		NUMBER: U6755