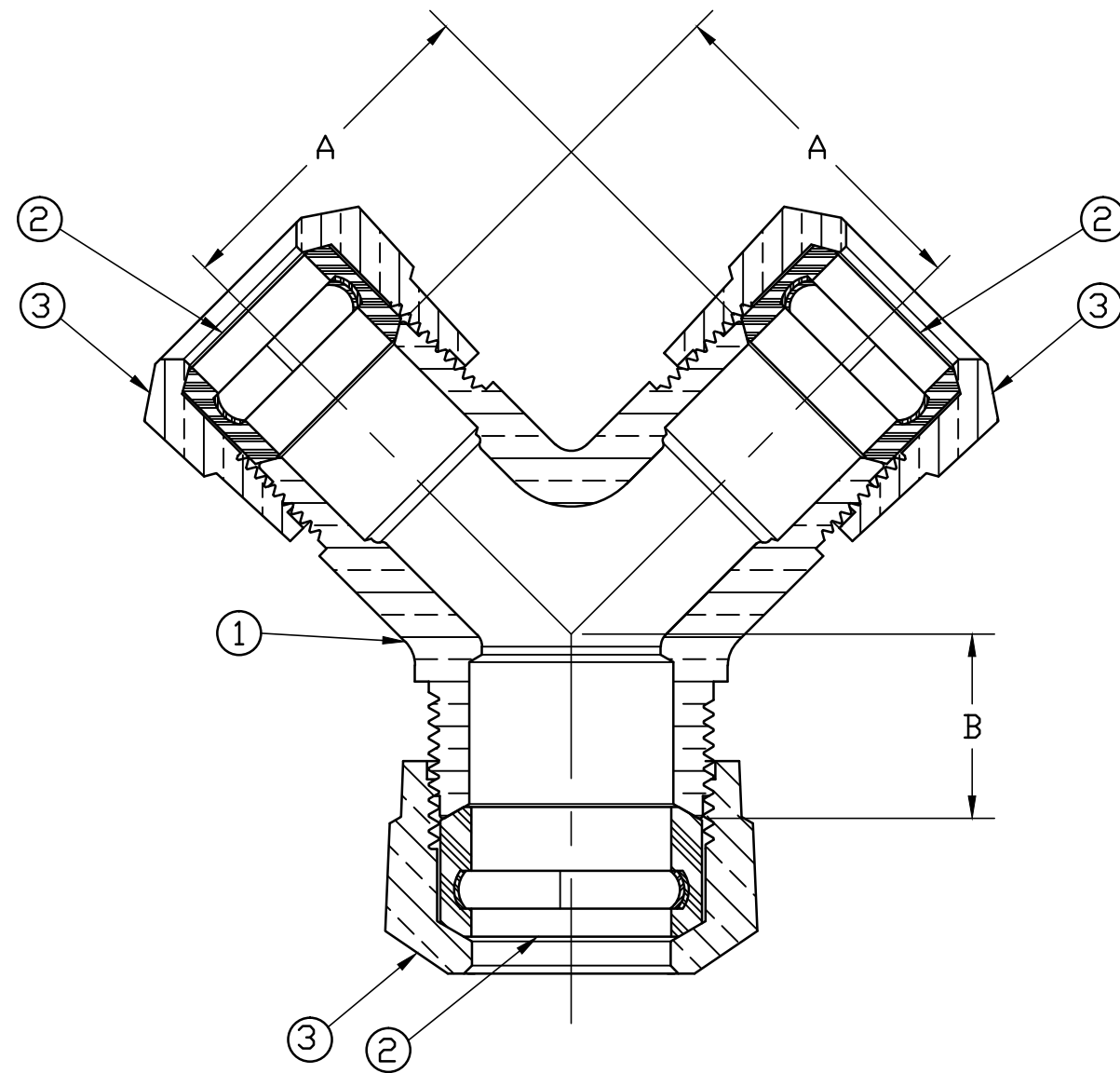


No.	DESCRIPTION	MATERIAL DESCRIPTION
1	BRANCH CONN	CAST LOW LEAD BRASS ALLOY
2	GASKET	ASTM D2000 (SBR)&410 STAINLESS STL
3	CONN NUT	CAST BRASS ASTM B62 ALLOY C83600

VALVE SIZE	A	B
3/4"x1"	1.91	1.03
1"x1-1/2"	2.38	1.40
1"x2"	2.38	1.59



ALL WETTED PARTS ARE LOW LEAD BRASS ALLOY

FILEPATH: PROD-ENG\JJ\SUBMITTALS\E2625SG

						DRFTR	JGarvin	6/1/11	<b>JONES</b>			
						CHKR					UNLESS OTHERWISE NOTED	THIRD ANGLE PROJECTION
						ENGR					SURFACE PREPARATION:	
						MGR					BREAK CORNER(S) ----- .000	
									TOLERANCE(S):			
									LINEAR ----- ± .000			
									ANGULAR ----- ± 0°00'			
									BY DATE			
									STK No:			
									MAT'L:			
									DESCR.			
									Y-BRANCH CONNECTION (2) BRANCH SHORT LOW LEAD BRASS (CTS PE ENDS)			
									DWG NUMBER E2625SG			
REV	ECR	DESCRIPTION	DATE	BY	CHKR							

DWG NUMBER  
E2625SG

JJ-MRKTG

TITLE TO AND OWNERSHIP OF THIS ENGINEERING DATA REMAINS IN Mueller Co. NO USE IS TO BE MADE OF THIS DATA EXCEPT AS SPECIFICALLY AUTHORIZED BY Mueller Co. ASSENT ON THE PART OF THE RECIPIENT TO THESE CONDITIONS IS PRESUMED