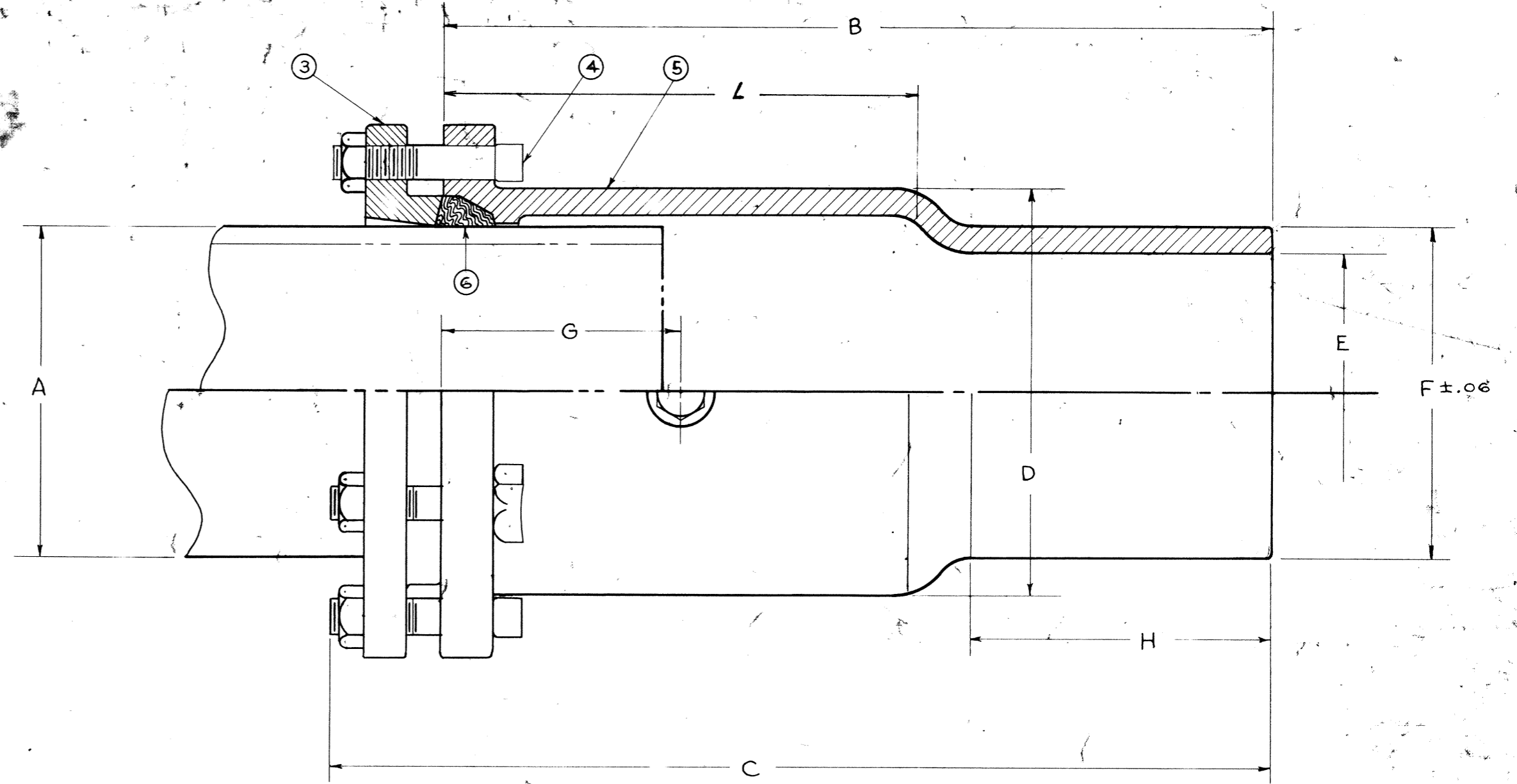
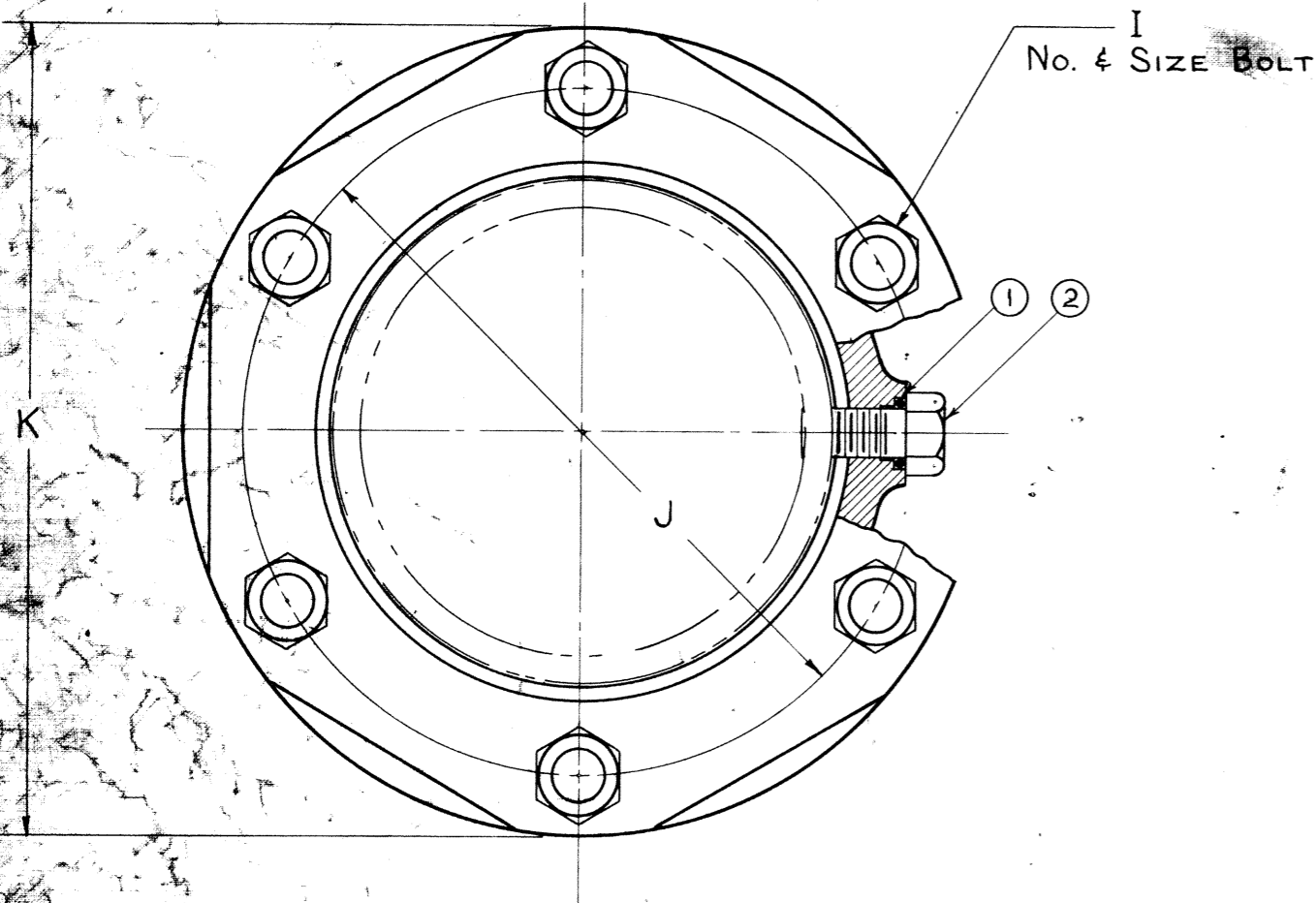


For C.I. Pipe Class A, B, C, D, AGA
and Cl. 10 thru 200 M.J.



SIZE	A	B	C	D	E	F ±.06	G	H	I	J	K	L
4"	4.80 5.00	17	19 1/2	6.4	4	4.80	4 7/16	6	4-3/4	7 3/4	9 3/8	10 5/16
6"	6.90 7.10	18	20 7/16	8.6	6	6.90	5 3/16	6 1/2	6-3/4	9 3/4	11 3/8	10 7/16
8"	9.05 9.30	19	21 7/8	11.06	8	9.05	5 11/16	6 1/4	6-3/4	12 1/8	13 3/4	11 1/2
10"	11.10 11.40	20	22 13/16	13.25	10	11.10	6 7/16	6 1/4	8-3/4	14 5/8	16 3/8	12 1/2
12"	13.20 13.50	20	22 3/4	15.40	12	13.20	6 11/16	6 1/4	8-3/4	16 7/8	18 3/4	12 7/16

PARTS LIST					
ITEM	DESCRIPTION	REQD.	MATERIAL	A.S.T.M.	
1	O RING	1	RUBBER		BUNA N
2	STOP SCREW	1	STEEL	A307	GR. B PLATED
3	PIPE GLAND	1	CAST IRON	A126	CL. B
4	PIPE GLAND BOLT	"I"	IRON	FED.	WW-P-421a
5	SLEEVE	1	CAST IRON	A126	CL. B
6	GASKET	1	RUBBER	FED.	WW-P-421a

NOTE: For use with Cut-in Valve.
Gasket furnished with sleeve is for use on spigot end of sleeve.
Use gaskets furnished with cut-in valve on ends of pipe.
H-840 with duct, tipped gasket, use with both diameters of pipe.

For use with std. Mech. Joint Fittings use gasket in bell of sleeve.
H-840 with duct tipped gasket for small dia. pipe.
H-841 with plain rubber gasket for large dia. pipe.

MUELLER CONFIDENTIAL

Title to and ownership of this engineering data remains in Mueller Co. No use is to be made of this data except as specifically authorized by Mueller Co. Assent on the part of recipients to these conditions is presumed.

MUELLER CO.
CORNERS HAVE ROUNDS FILLETS UNLESS NOTED CHATTANOOGA, TENN.

TOLERANCES-UNLESS OTHERWISE SPECIFIED
F-MACHINE FINISH-HOLD TO ±
F-MACHINE FINISH-HOLD TO ±
DO NOT SCALE DRAWING

5837

L" DIM. ADDED 15 FEB 73 W.S.G.

DRAWN BY	NMH	2-17-56	APPROVED
TRACED "	NMH	2-17-56	
CHECKED "	W.R.D.	2-20-56	
PASSED "			