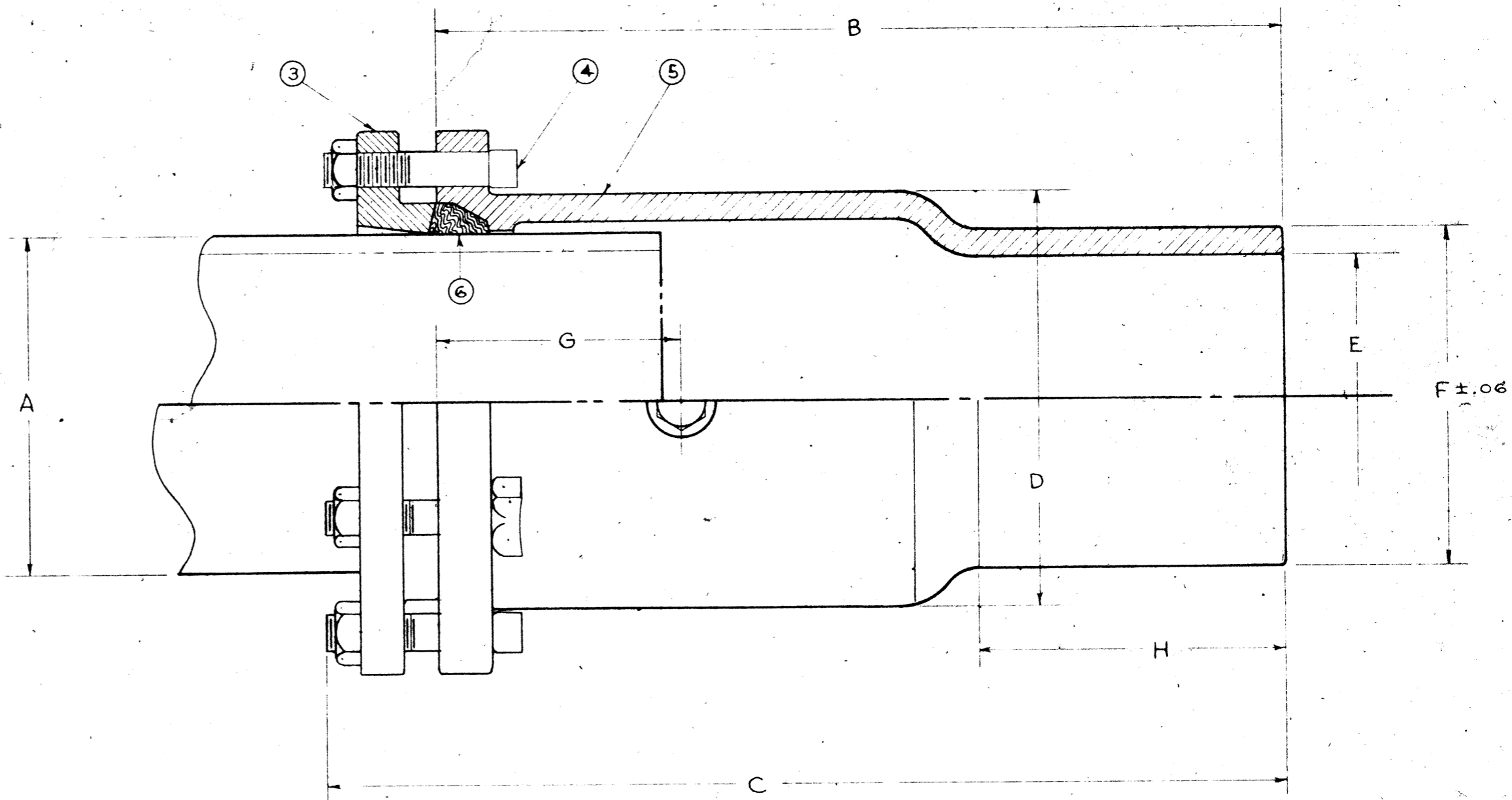
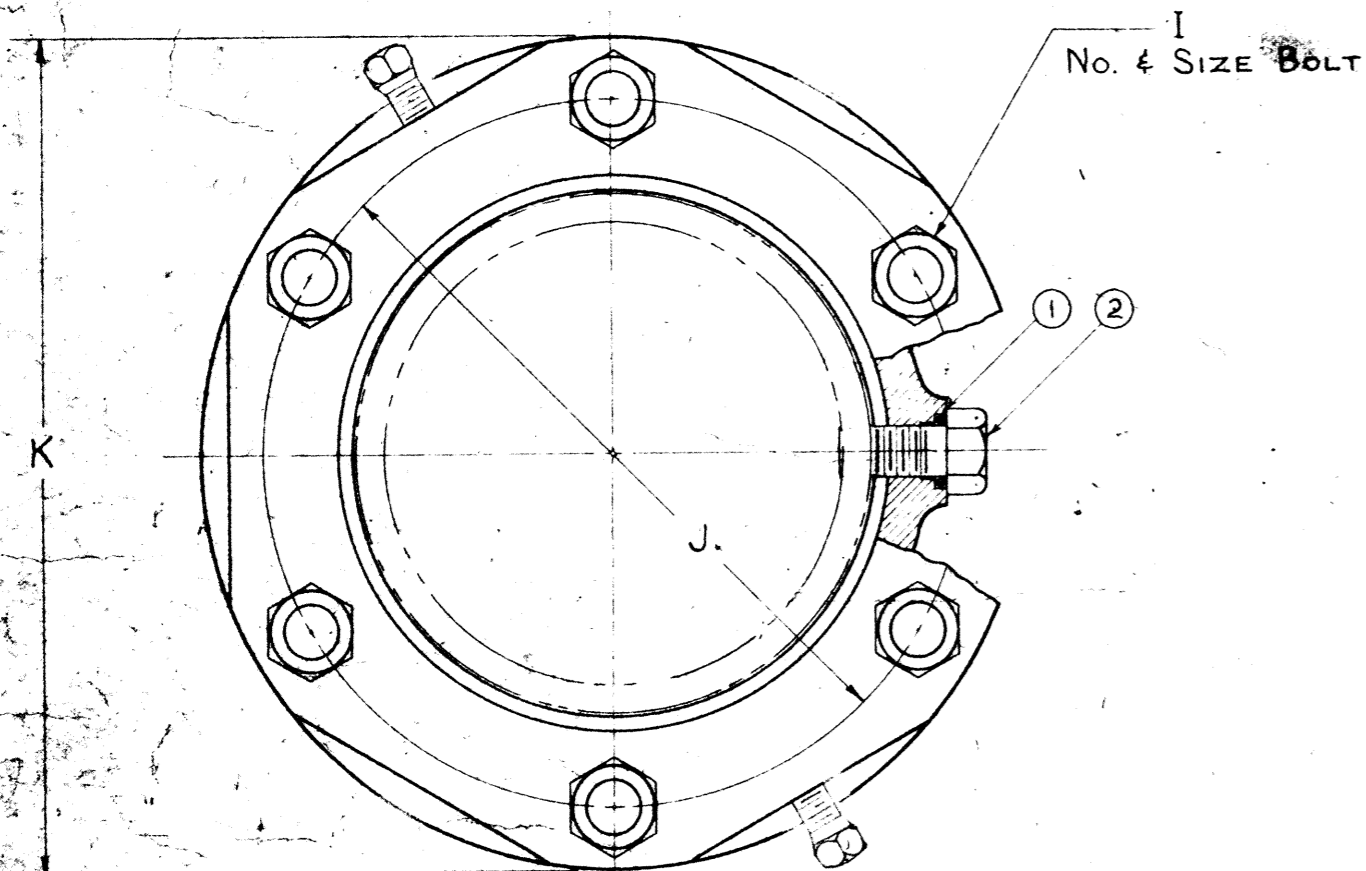


Dwg. No. 6223 H-842 & H-843 CUT-IN SLEEVE - 175# W.P. - W.O.
 W/SET SCREWS IN PIPE GLAND
 For C.I. Pipe Class A, B, C, D, AGA
 and Cl. 10 thru 200 M.J.



SIZE	A	B	C	D	E	F ±.06	G	H	I	J	K
4"	4.80 5.00	17	19 1/2	6.4	4	4.80	4 7/16	6	4 - 3/4	7 3/4	9 3/8
6"	6.90 7.10	18	20 7/16	8.6	6	6.90	5 3/16	6 1/2	6 - 3/4	9 3/4	11 3/8
8"	9.05 9.30	19	21 7/8	11.06	8	9.05	5 11/16	6 1/4	6 - 3/4	12 1/8	13 3/4
10"	11.10 11.40	20	22 13/16	13.25	10	11.10	6 7/16	6 1/4	8 - 3/4	14 5/8	16 3/8
12"	13.20 13.50	20	22 3/4	15.40	12	13.20	6 11/16	6 1/4	8 - 3/4	16 7/8	18 3/4

PARTS LIST				
ITEM	DESCRIPTION	REQD	MATERIAL	A.S.T.M.
1	O RING	1	RUBBER	BUNA N
2	STOP SCREW	1	STEEL.	A307 GR. B PLATED
3	PIPE GLAND	1	CAST IRON	A126 CL. B
4	PIPE GLAND BOLT	"I"	IRON	FED. WW-P-421a
5	SLEEVE	1	CAST IRON	A126 CL. B
6	GASKET	1	RUBBER	FED. WW-P-421a
7	SET SCREW	2	STEEL	A307 GR B PLATED

NOTE: For Use with Cut-in Valve
 Gasket furnished with sleeve is for use on spigot end of sleeve.
 Use gaskets furnished with cut-in valve on ends of pipe.
 H-842 with duck, tipped gasket, use with both diameters of pipe.

For use with std. Mech. Joint Fittings
 use gasket in bell of sleeve.
 H-842 with duck tipped gasket for small dia. pipe.
 H-843 with plain rubber gasket for large dia. pipe.

MUELLER CONFIDENTIAL
 Title to and ownership of this engineering data remains in Mueller Co. No use is to be made of this data except as specifically authorized by Mueller Co. Assent on the part of recipients to these conditions is presumed.

DRAWN BY	NMH	2-17-56	APPROVED
TRACED	NMH	2-17-56	
CHECKED	LWRD	2-20-56	
PASSED			

CORNERS HAVE ROUNDS FILLETS UNLESS NOTED CHATTANOOGA, TENN.

TOLERANCES UNLESS OTHERWISE SPECIFIED
 F-MACHINE FINISH-HOLD TO ±
 F-MACHINE FINISH-HOLD TO ±
 DO NOT SCALE DRAWING

6223