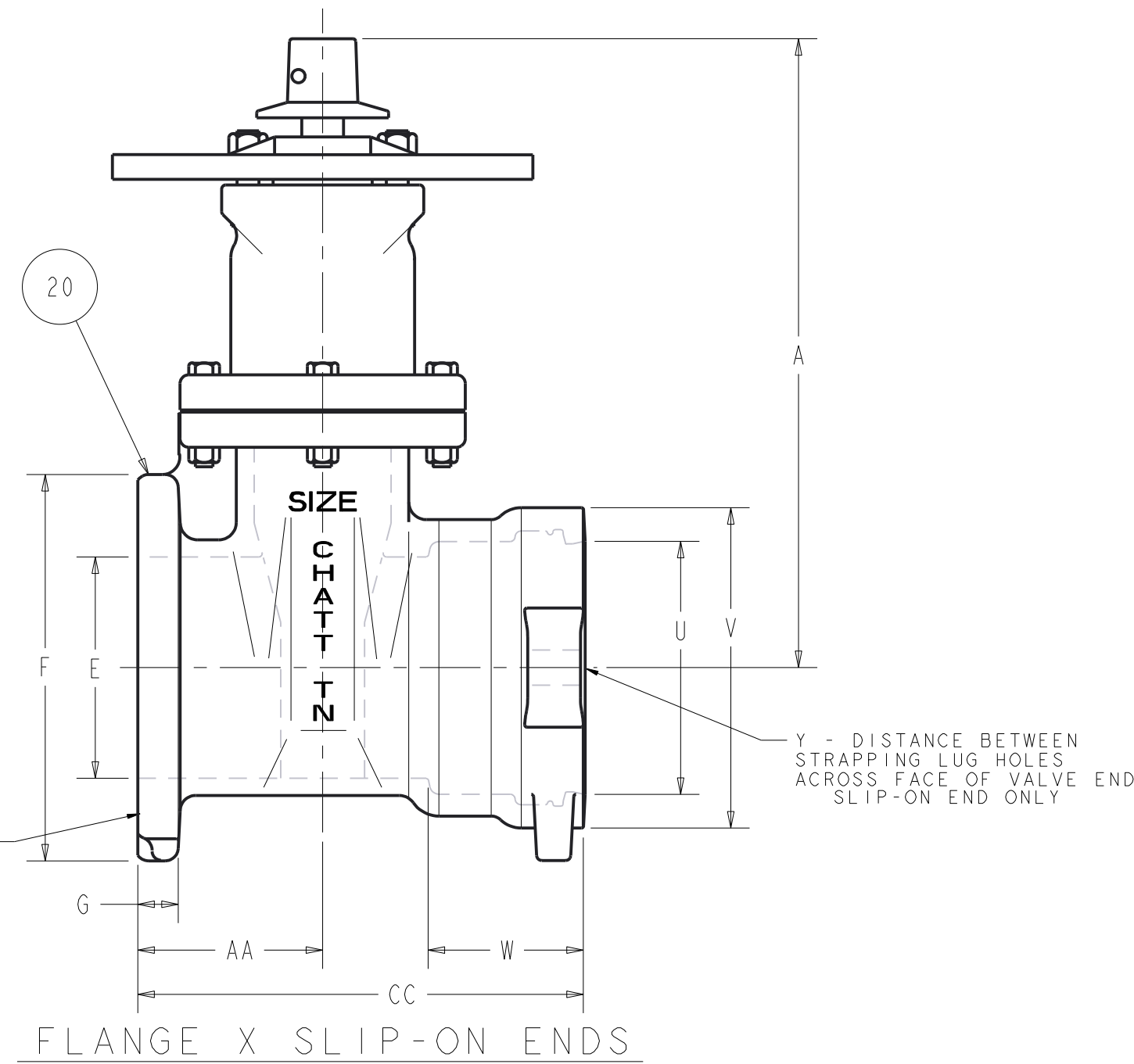
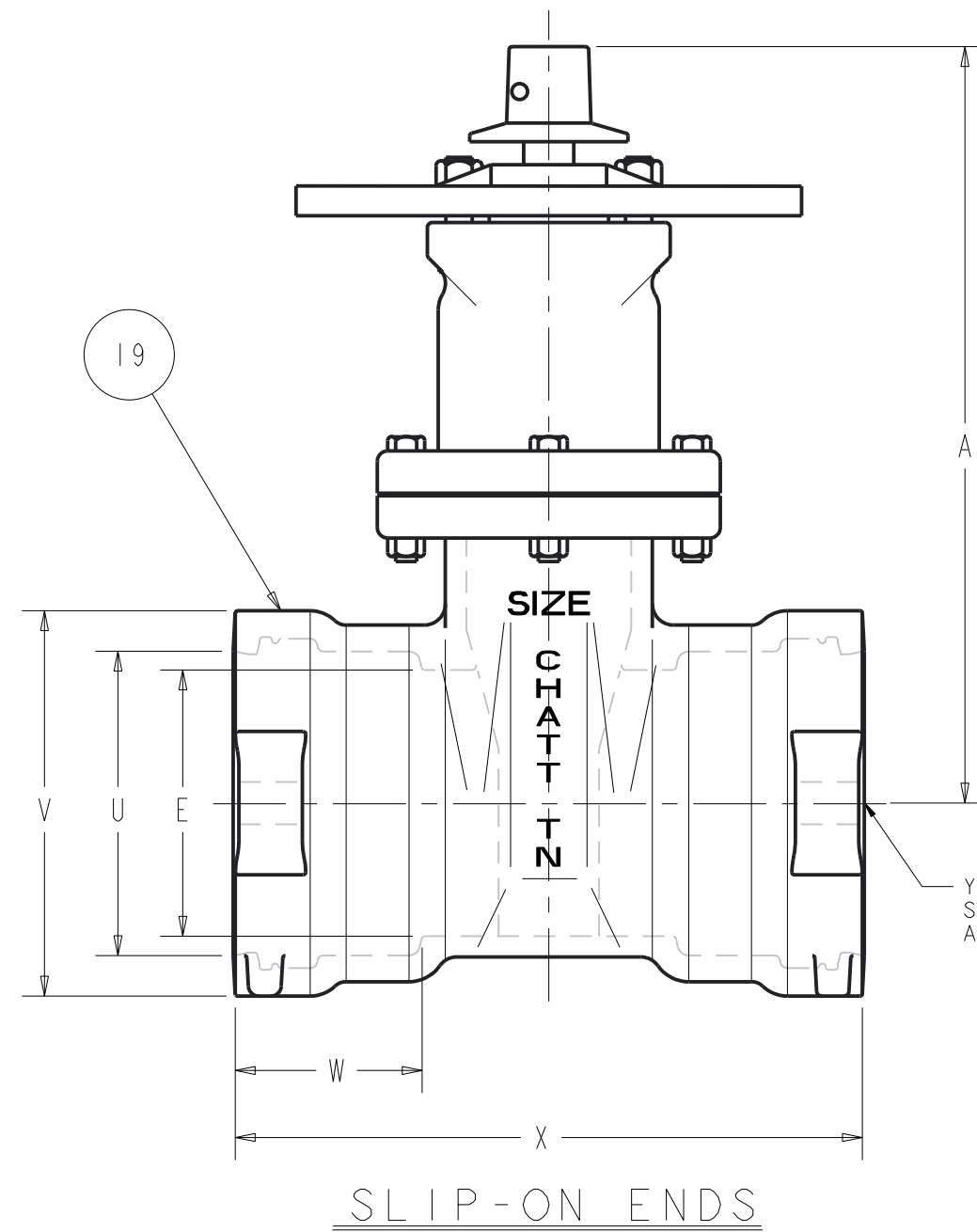
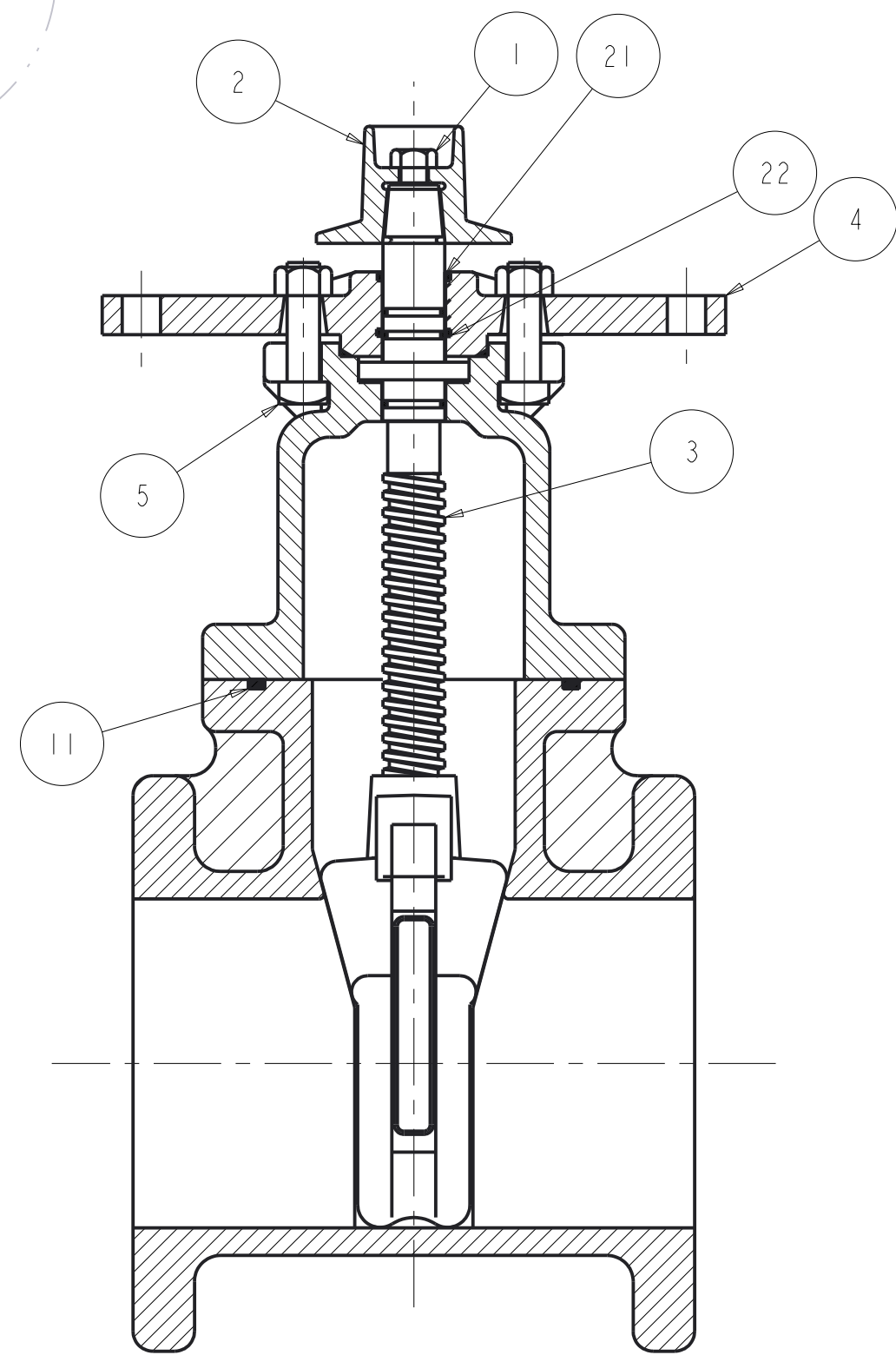
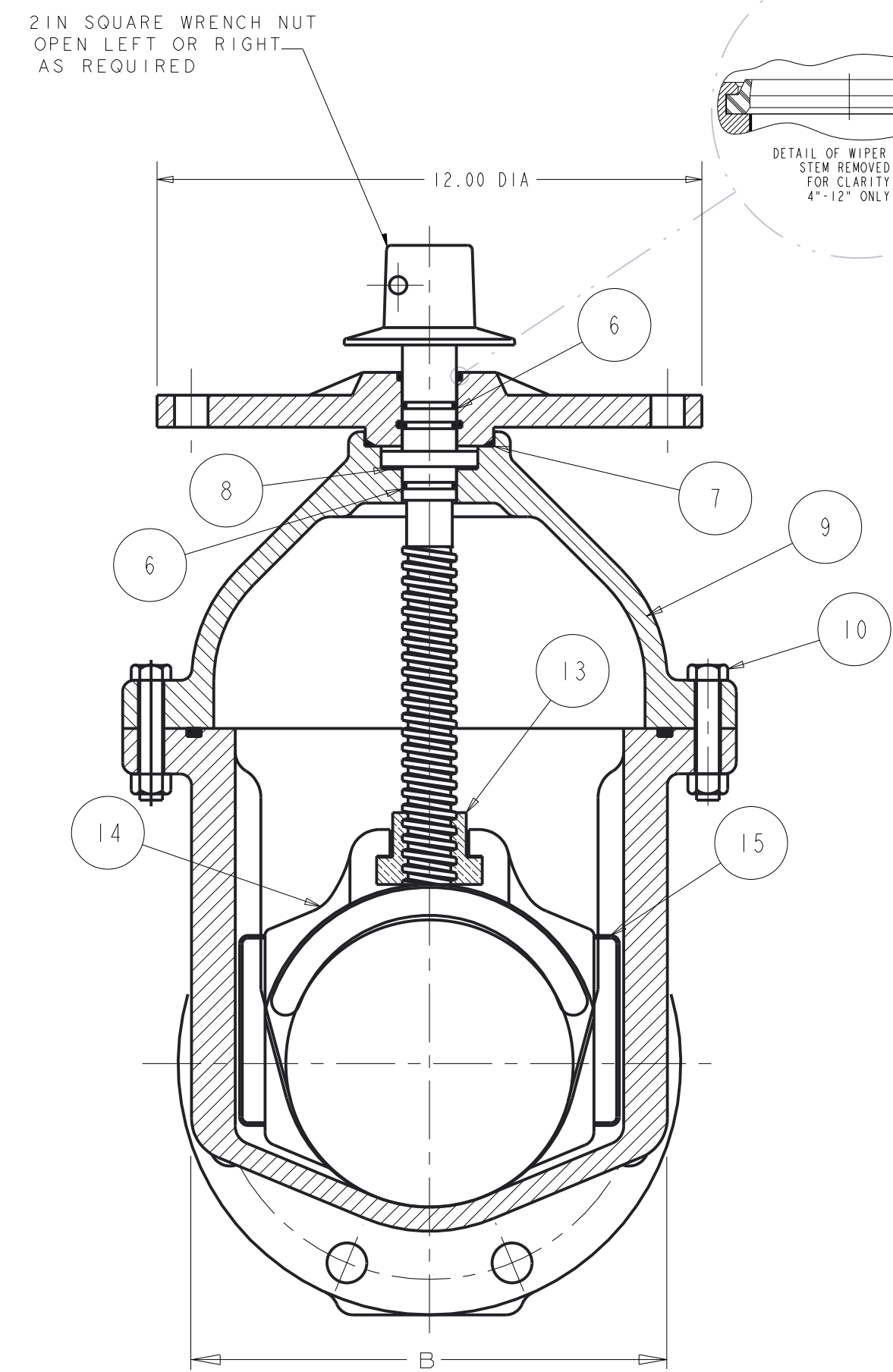
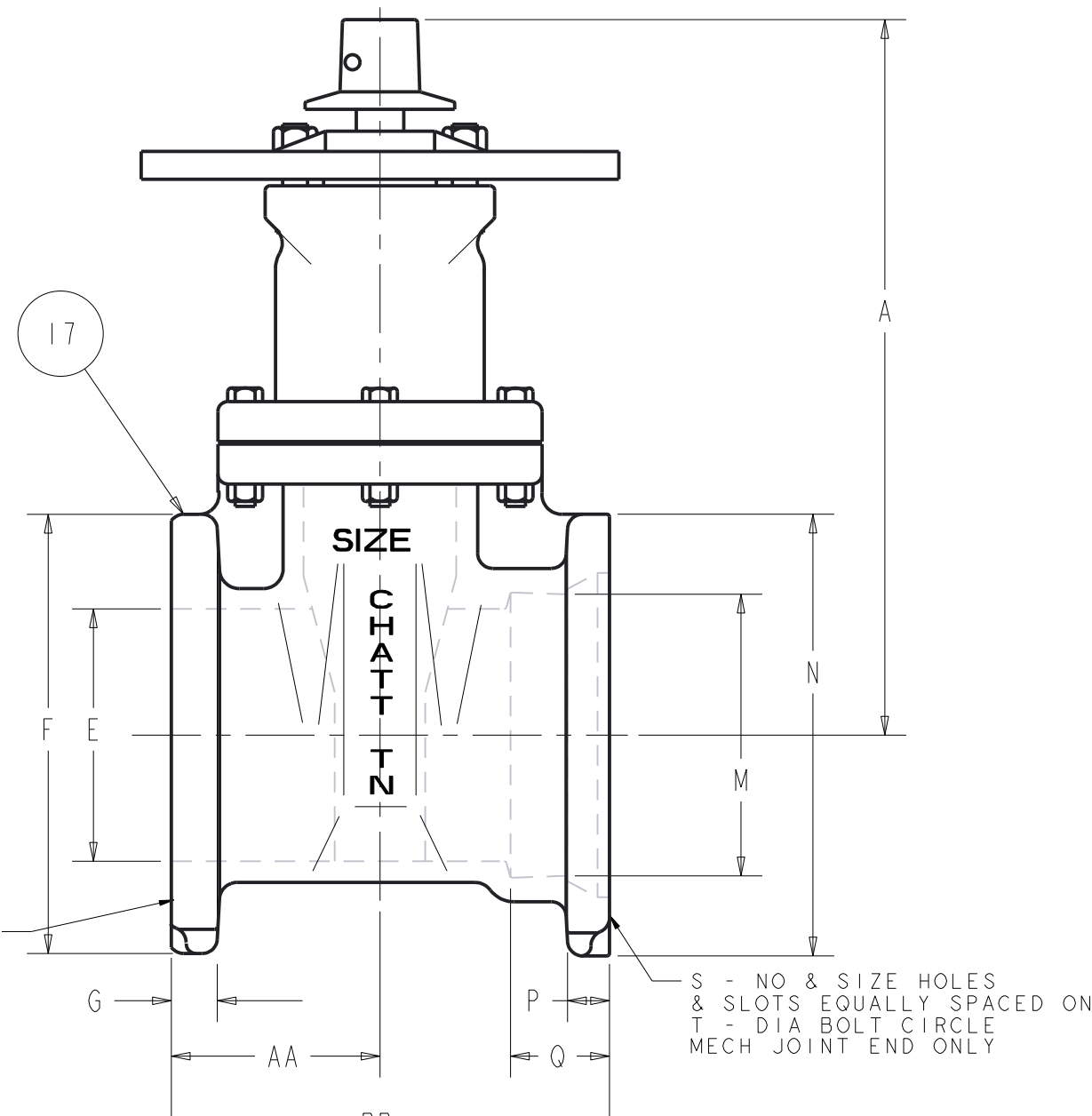
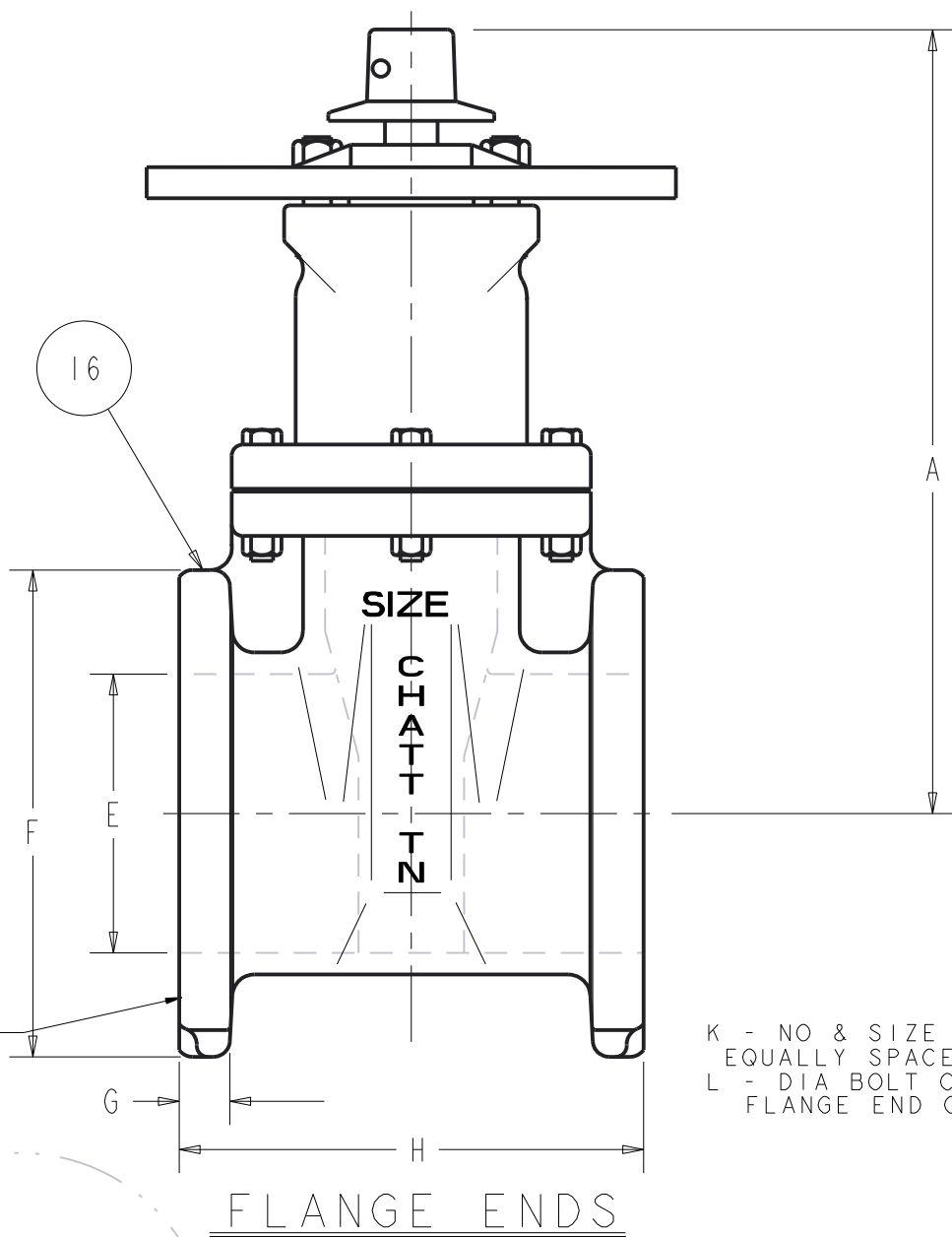
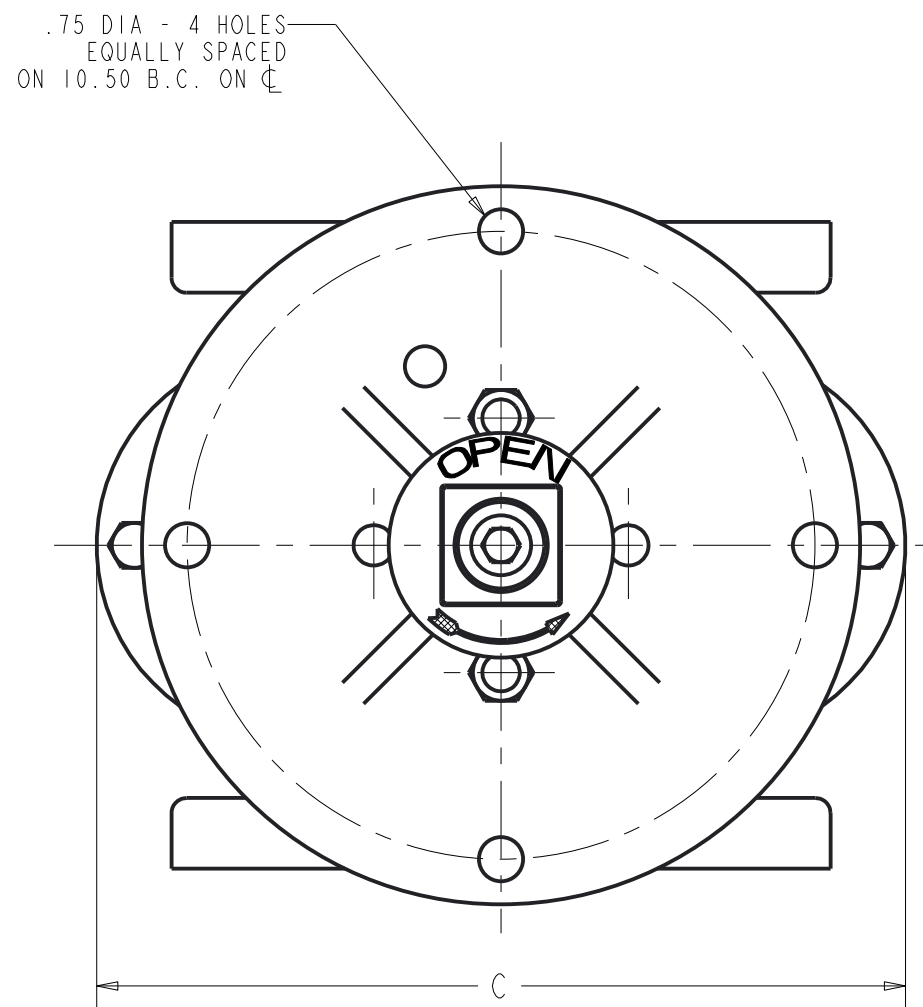


U7337 4IN - 12IN RWGV P-USPI



PART LIST					
ITEM	DESCRIPTION	REQ'D	MATERIAL	ASTM	
1	CAP SCREW	1	304 STAINLESS STEEL	F593	GROUP 1-CW
2	WRENCH NUT	1	DUCTILE IRON	A536	
3	STEM	1	MANGANESE BRONZE	B138	
4	STUFFING BOX	1	DUCTILE IRON	A536	
5	STUFFING BOX BOLTS STUFFING BOX NUTS	2	304 STAINLESS STEEL 304 STAINLESS STEEL	F593 F594	GROUP 1-CW GROUP 1-CW
6	O-RING	3	RUBBER	D2000	R34 (NITRILE)
7	O-RING	1	RUBBER	D2000	R34 (NITRILE)
8	ANTI-FRICTION WASHER	1	ACETAL		M90
9	BONNET	1	DUCTILE IRON	A536	
10	BONNET BOLTS BONNET NUTS	"Z"	304 STAINLESS STEEL 304 STAINLESS STEEL	F593 F594	GROUP 1-CW GROUP 1-CW
11	BONNET GASKET (O-RING)	1	RUBBER	D2000	R34 (NITRILE)
13	DISC NUT	1	BRONZE	B62	ALLOY C83600
14	DISC	1	SEE NOTES 1		
15	GUIDE CAP	2	ACETAL		M90
16	BODY - FLANGE ENDS	1	DUCTILE IRON	A536	
17	BODY - FLANGE x MJ ENDS	1	DUCTILE IRON	A536	
18	BODY - MJ ENDS	1	DUCTILE IRON	A536	
19	BODY - SLIP-ON ENDS	1	DUCTILE IRON	A536	
20	BODY - FLANGE x SLPI-ON END	1	DUCTILE IRON	A536	
21	WIPER RING	1	RUBBER		
22	O-RING	1	RUBBER	D2000	R34 (NITRILE)

NOTES:
1. RUBBER ENCAPSULATED CAST IRON DISC.
DUCTILE IRON ASTM A536 65-45-12 OR 70-50-05
RUBBER - SBR - ASTM D2000

DIMENSIONS FOR MUELLER RESILIENT WEDGE VALVE - INCHES (this drawing only)																									
VALVE SIZE	A	B	C	E	F	G	H	K	L	M	N	P	Q	S	T	U	V	W	X	Y	Z	AA	BB	CC	TURN TO OPEN
4	14.19	8.25	10.79	4.30	9.00	0.94	9.00	8 - 0.75	7.50	4.90	9.12	1.00	2.50	4 - 0.88	7.50	4.92	6.88	4.12	12.81	8.62	4	4.50	9.50	10.91	14
6	18.00	10.50	13.50	6.30	11.00	1.06	10.50	8 - 0.88	9.50	7.00	11.12	1.09	2.50	6 - 0.88	9.50	7.02	9.12	4.38	14.96	10.62	6	5.25	11.06	12.73	20.5
8	21.50	13.21	16.36	8.30	13.50	1.19	11.50	8 - 0.88	11.75	9.15	13.37	1.18	2.50	6 - 0.88	11.75	9.30	11.38	5.62	17.94	13.12	6	5.75	12.09	14.72	26.5
10	25.50	16.48	19.99	10.30	16.00	1.25	13.00	12 - 1.00	14.25	11.20	15.62	1.25	2.50	8 - 0.88	14.00	11.38	13.50	5.62	18.50	16.38	8	6.50	13.94	15.75	33
12	28.62	16.83	21.00	12.30	19.00	1.31	14.00	12 - 1.00	17.00	13.30	17.88	1.31	2.50	8 - 0.88	16.25	13.33	15.75	5.62	18.70	18.12	8	7.00	14.50	16.35	38.5

APPROVED
By Matt Sutterfield at 3:14 pm, Sep 02, 2016

DR BY	AO	8/30/16	UNLESS OTHERWISE NOTED	THIRD ANGLE PROJECTION	C.B. NO.
CHKD	BB	8/30/16	BREAK CAST CORNERS!		
ENGR	MS	8/30/16	BREAK WASH CORNERS!		
MSR			TOLERANCES	PURCH. NO.	FINISH
MFR			UNLESS OTHERWISE NOTED	REF. NO.	SEAL
TOOL			LINEAR		NONE
FDKY			ANGULAR	STR. NO.	
NOTED					
MATERIAL		DESCR.		NUMBER	
U.S. PIPE		4IN - 12IN RWGV P-USPI		U7337	