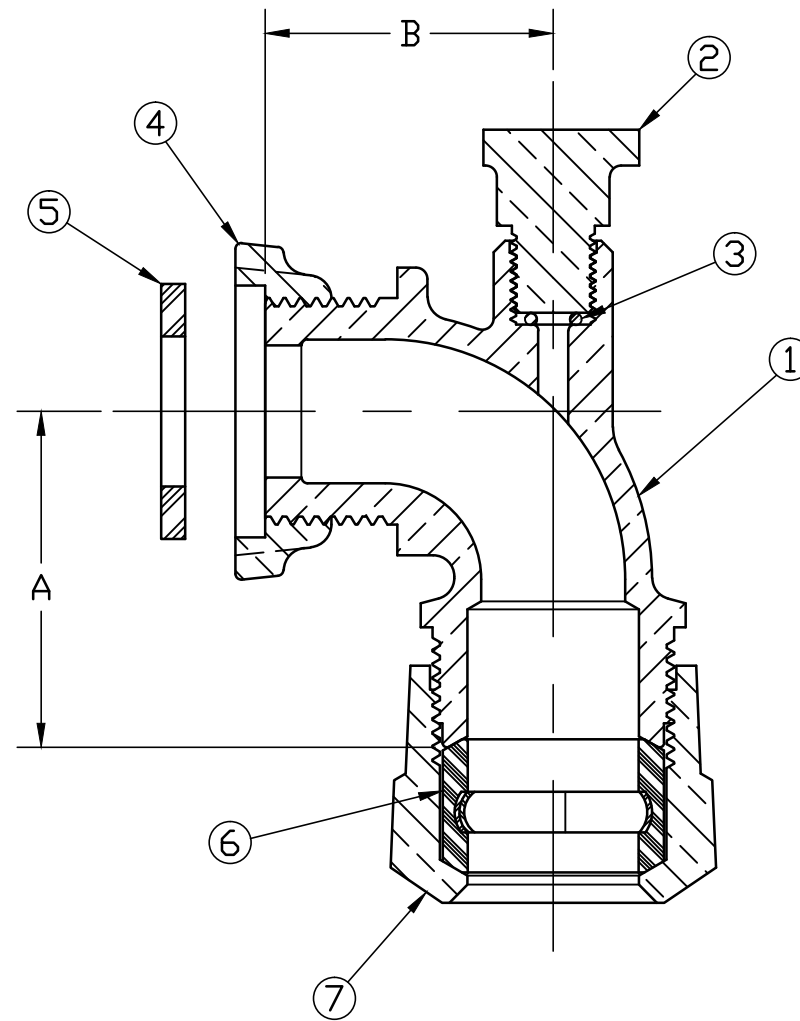


| No. | DESCRIPTION | MATERIAL |
|-----|---------------|------------------------------------|
| 1 | TAILPIECE | CAST LOW LEAD BRASS ALLOY |
| 2 | DRAIN PIN | CAST LOW LEAD BRASS ALLOY |
| 3 | O-RING | EPDM ASTM D2000 |
| 4 | LOCK NUT | CAST BRASS ASTM B62 ALLOY C83600 |
| 5 | RUBBER GASKET | NITRILE ASTM D2000 |
| 6 | GASKET | ASTM D2000 (SBR)&410 STAINLESS STL |
| 7 | CONN NUT | CAST BRASS ASTM B62 ALLOY C83600 |



| METER CONNX SIZE | A | B |
|------------------|-------|-------|
| 5/8 x 3/4 | 1.750 | 1.500 |
| 5/8 x 3/4 x 3/4 | 1.750 | 1.500 |

ALL WETTED PARTS ARE LOW LEAD BRASS ALLOY

FILEPATH: PROD-ENG\JAMESJONES\ASYSUBMITTALS\E6231DSG

| | | | | | | | | | | | |
|--|--|--|--|--|--|---|-----|---------|--------------|--|---|
| | | | | | | DRFTR | RWB | 5/16/16 | JONES | | |
| | | | | | | CHKR | | | | | UNLESS OTHERWISE NOTED THIRD ANGLE PROJECTION SURFACE PREPARATION: BREAK CORNER(S) ----- .000 SURFACE FINISH -- XX RMS TOLERANCE(S): LINEAR ----- ± .000 ANGULAR ----- ± 0°00' |
| | | | | | | ENGR | | | | | |
| | | | | | | MGR | | | | | |
| | | | | | | | BY | DATE | | | |
| | | | | | | STK No: | | | | | |
| | | | | | | MAT'L: | | | | | |
| | | | | | | DESCR. | | | DWG NUMBER | | |
| | | | | | | QUARTER BEND LLB METER COUPLING IRON BAR x 110 CTS | | | E6231DSG | | |
| | | | | | | PER EST NO: DXXXX EST FIN WT = 0.0000 lbs | | | | | |

DWG NUMBER
 E6231DSG
 442-MRKTG

TITLE TO AND OWNERSHIP OF THIS ENGINEERING
 DATA REMAINS IN Mueller Co. NO USE IS TO BE
 MADE OF THIS DATA EXCEPT AS SPECIFICALLY
 AUTHORIZED BY Mueller Co. ASSENT ON THE PART
 OF THE RECIPIENT TO THESE CONDITIONS IS PRESUMED