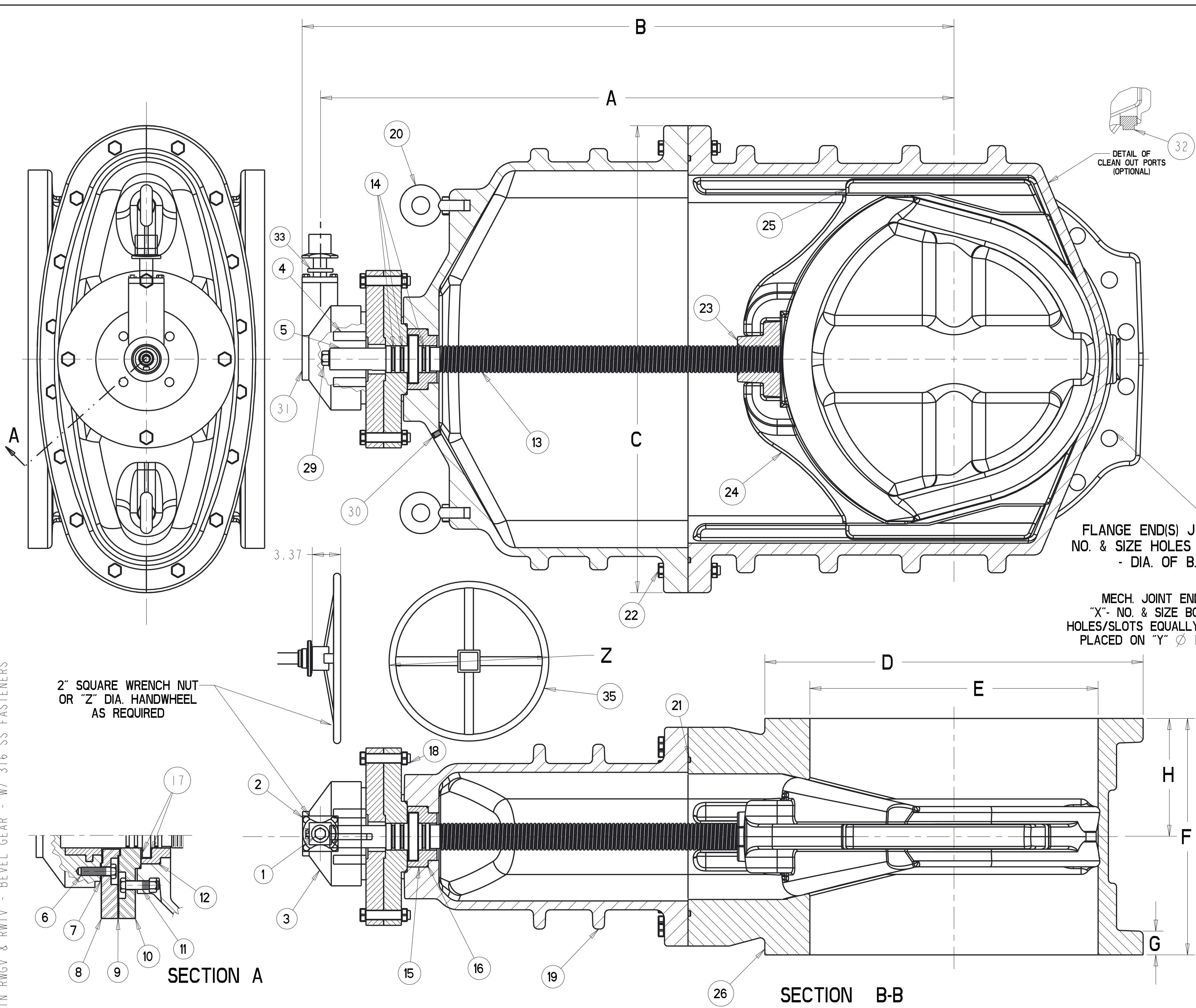


16 IN. - 36 IN RWGV & RWTV - BEVEL GEAR - W/ 316 SS FASTENERS

UC956

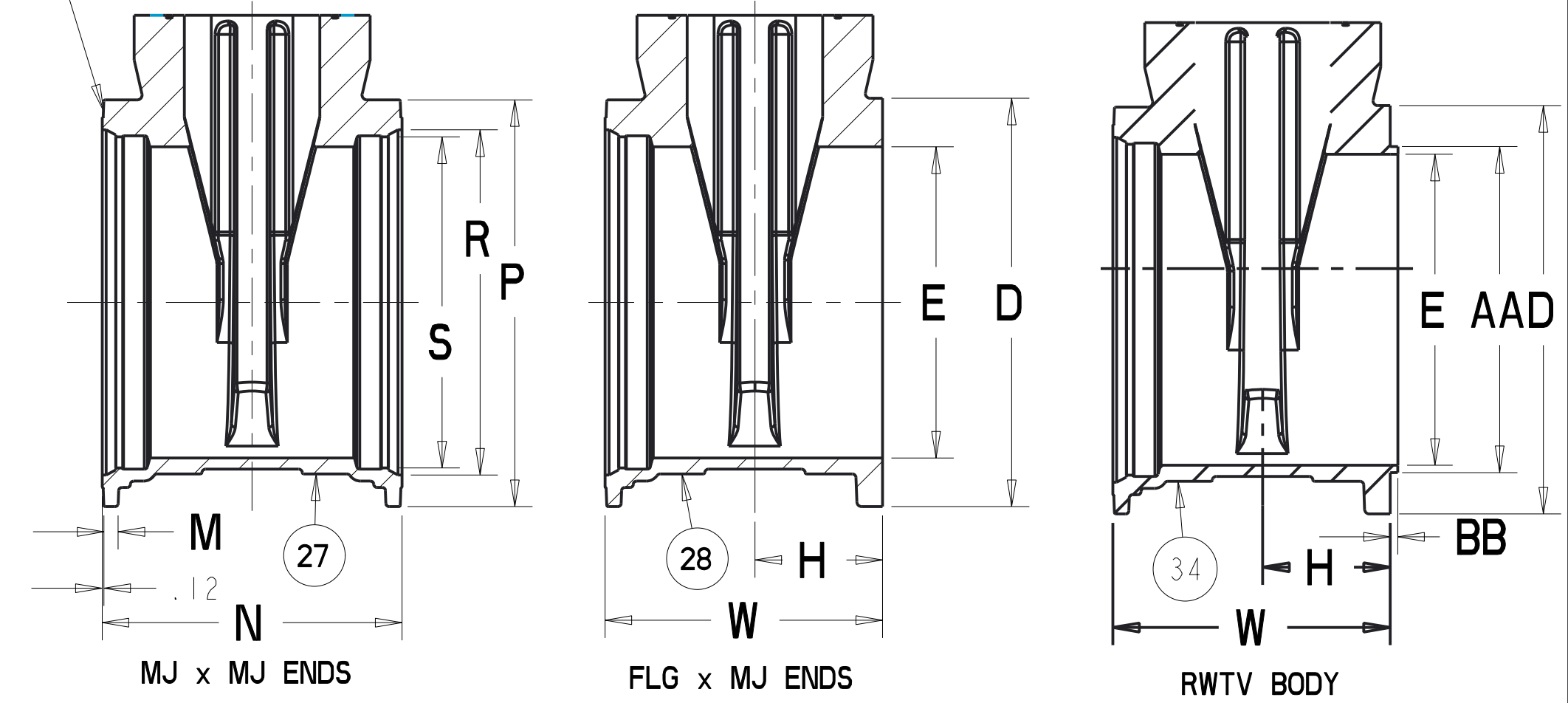


FLANGE END(S) J - NO. & SIZE HOLES K - DIA. OF BC.

MECH. JOINT END(S) "X" - NO. & SIZE BOLT HOLES/SLOTS EQUALLY S PLACED ON "Y" Ø BC.

2" SQUARE WRENCH NUT OR "Z" DIA. HANDWHEEL AS REQUIRED

PARTS LIST				
ITEM	DESCRIPTION	REQ'D	MATERIAL	ASTM
1	CAP SCREW	1	316 STAINLESS STEEL	SEE NOTE 2
2	WRENCH NUT	1	CAST IRON [SEE NOTE 5]	A126
3	BEVEL GEAR UNIT	1		SEE NOTE 3
4	STEM NUT	1	BRASS	
5	KEY	1	STEEL	
6	SOCKET HEAD SCREW	4	316 STAINLESS STEEL	SEE NOTE 2
7	GASKET	1	RUBBER	D2000
8	ADAPTER	1	STEEL	A36
9	GASKET	1	RUBBER	D2000
10	STUFFING BOX	1	STEEL	A36
11	SOCKET HEAD BOLT & NUT	4	316 STAINLESS STEEL	SEE NOTE 2
12	O-RING	1	RUBBER	D2000 R34 (NITRILE) 16" R73 (EPDM) 18"-36"
13	STEM	1	BRONZE	SEE NOTE 4
14	O-RING	3	RUBBER	D2000 R34 (NITRILE) 16" R73 (EPDM) 18"-36"
15	BONNET BUSHING	1	BRONZE	B62 18"-36" ONLY
16	O-RING	1	RUBBER	D2000 R34 (NITRILE) 16" R73 (EPDM) 18"-36"
17	WASHER	2	BRASS	
18	HEX BOLT & NUT	4	316 STAINLESS STEEL	SEE NOTE 2
19	BONNET	1	DUCTILE IRON	A536
20	EYEBOLT	2	STEEL	GALVANIZED
21	O-RING	1	RUBBER	D2000 R34 (NITRILE) 16" R73 (EPDM) 18"-36"
22	HEX BOLT & NUT	"L"	316 STAINLESS STEEL	SEE NOTE 2
23	DISC NUT	1	BRONZE	B62
24	DISC	1		SEE NOTE 1
25	GUIDE CAP	2	ACETAL	
26	BODY - FLG ENDS	1	DUCTILE IRON	A536
27	BODY - MJ ENDS	1	DUCTILE IRON	A536
28	BODY FLG X MJ ENDS	1	DUCTILE IRON	A536
29	HOLD-DOWN WASHER & BOLT	1	316 STAINLESS STEEL	SEE NOTE 2
30	PIPE PLUG	1	304 STAINLESS STEEL	A193 GRADE B8
31	ACTUATOR CAP PLUG	1	CAST IRON [SEE NOTE 5]	
32	PIPE PLUG	2	SUPPLIED WHEN TAPPED	
33	IDENTIFICATION WASHER	1	RED RUBBER	
34	BODY - TAPPED FLG X MJ	1	DUCTILE IRON	A536
35	HAND WHEEL	1	STEEL	



NOTE:

- 1) RUBBER ENCAPSULATED DUCTILE IRON DISC
RUBBER - EPDM ASTM D2000
DUCTILE IRON ASTM A536 GRADE 65-45-12 OR 70-50-05
- 2) BOLTS - ASTM F593 GROUP 2-CW
NUTS - ASTM F594 GROUP 2-CW
- 3) VALVES WILL BE FURNISHED WITH ONE OF THE LISTED OPERATORS AT THE MANUFACTURER'S DISCRETION.
16"-24" MASTERGEAR OR ROTORK
30" & 36" LIMITORQUE OR ROTORK.
- 4) 16" VALVE - BRONZE ALLOY ASTM B138 C67600
18" TO 30" VALVES - BRONZE ASTM B584 C86400 OR C86500
36" VALVES - BRONZE ASTM B584 C86700 OR C86200
- 5) MANUFACTURER'S OPTION TO UPGRADE MATERIAL TO DUCTILE IRON A536 GRADE 65-45-12 OR 70-50-05

VALVE SIZE	A	B	C	D	E	F	G	H	J	K	L	M	N	P	R	S	W	X	Y	Z	AA	BB	TURNS TO OPEN MASTERGEAR, RATIO 4.5:1 LIMITORQUE, RATIO 4:1	TURNS TO OPEN ROTORK, RATIO 4:1	WEIGHT	
16	37.03	39.24	26.58	23.50	16.00	16.06	1.59	8.03	16	1.20	21.25	12	1.10	19.75	22.56	18.40	17.28	17.91	12-.875	21.00	12.00	17.23	0.25	221	196	1,000
18	44.50	46.06	30.50	24.88	18.38	17.00	1.69	8.50	16-1.25	22.75	12	1.06	21.00	24.88	20.74	19.64	19.00	12-.875	23.25	12.00	19.45	0.25	257	228	1,350	
20	47.69	49.25	33.75	27.50	20.38	18.00	1.78	9.00	20-1.25	25.00	12	1.60	21.50	27.25	22.84	21.74	19.75	14-.875	25.50	18.00	21.45	0.25	284	252	1,800	
24	54.06	55.50	39.50	32.00	24.38	20.00	2.00	10.00	20-1.38	29.50	16	1.12	23.50	31.88	27.05	25.94	21.75	16-.875	30.00	18.00	25.43	0.25	338	300	2,300	
30	64.93	66.52	48.00	38.75	30.38	26.00	2.12	13.00	28-1.38	36.00	20	1.25	33.50	39.53	33.47	32.18	29.75	20-1.125	36.88	18.00	30.94	.516	372	372	5,100	
36	77.19	78.75	56.50	46.00	36.38	30.00	2.37	15.00	32-1.63	42.75	24	1.45	37.50	46.41	39.77	38.48	33.75	24-1.125	43.75	18.00	36.94	.516	444	444	8,400	

APPROVED
By Matthew Sliger at 11:14 am, Aug 15, 2017

DR BY: AO 7/11/17	UNLESS OTHERWISE NOTED	THIRD ANGLE PROJECTION	C.D. NO.
CHKD: BB 7/11/17	BREAK CAST CORNERS!		
ENGR: MS 7/11/17	BREAK MACH CORNERS!	PURCH. NO.	FINISH ASSY
MFG:		REF. NO.	SCALE
INFO:			NONE
TOOL:	UNLESS OTHERWISE NOTED		
FBRY:	LINEAR	ANGULAR	STR. NO.
	±	±	
MATERIAL: NOTED			
UNITED STATES PIPE AND FOUNDRY CO. CHATTANOOGA TENNESSEE		DESCR: 16IN-36IN RWGV & RWTV - BEVEL GEAR W/ 316 SS FASTENERS	NUMBER: U6956