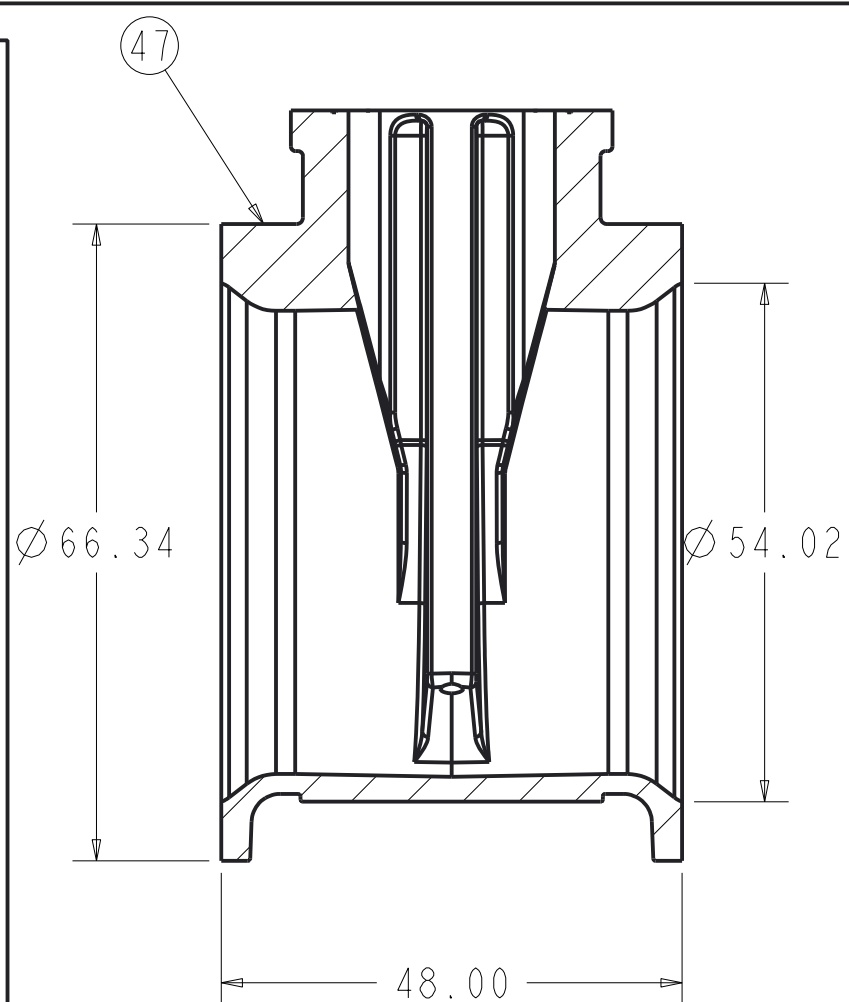
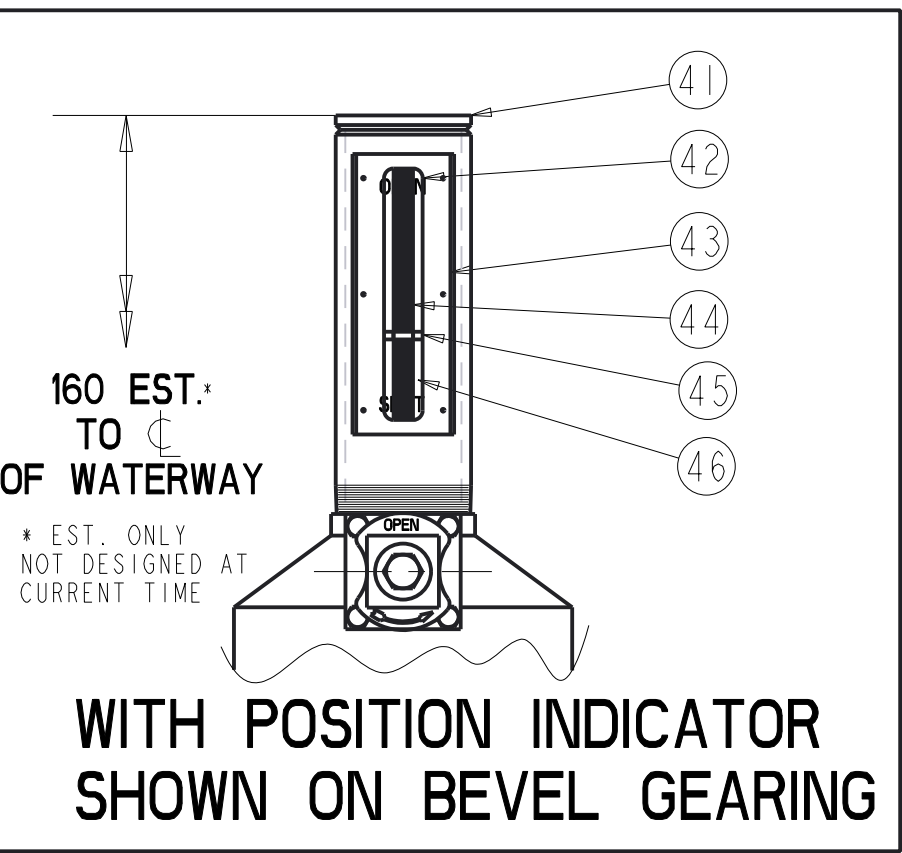
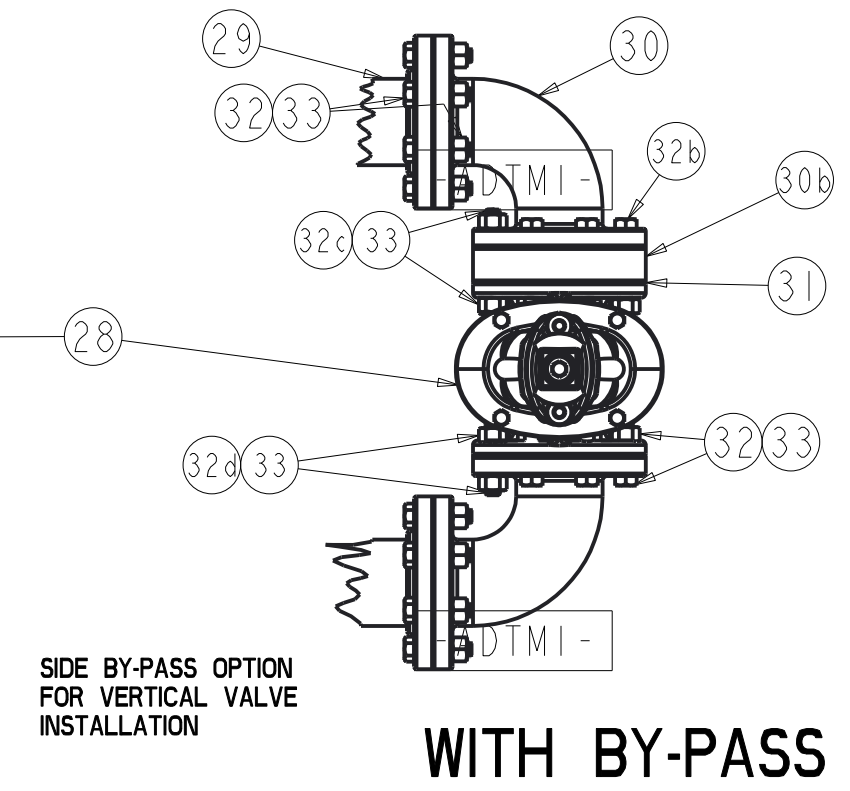
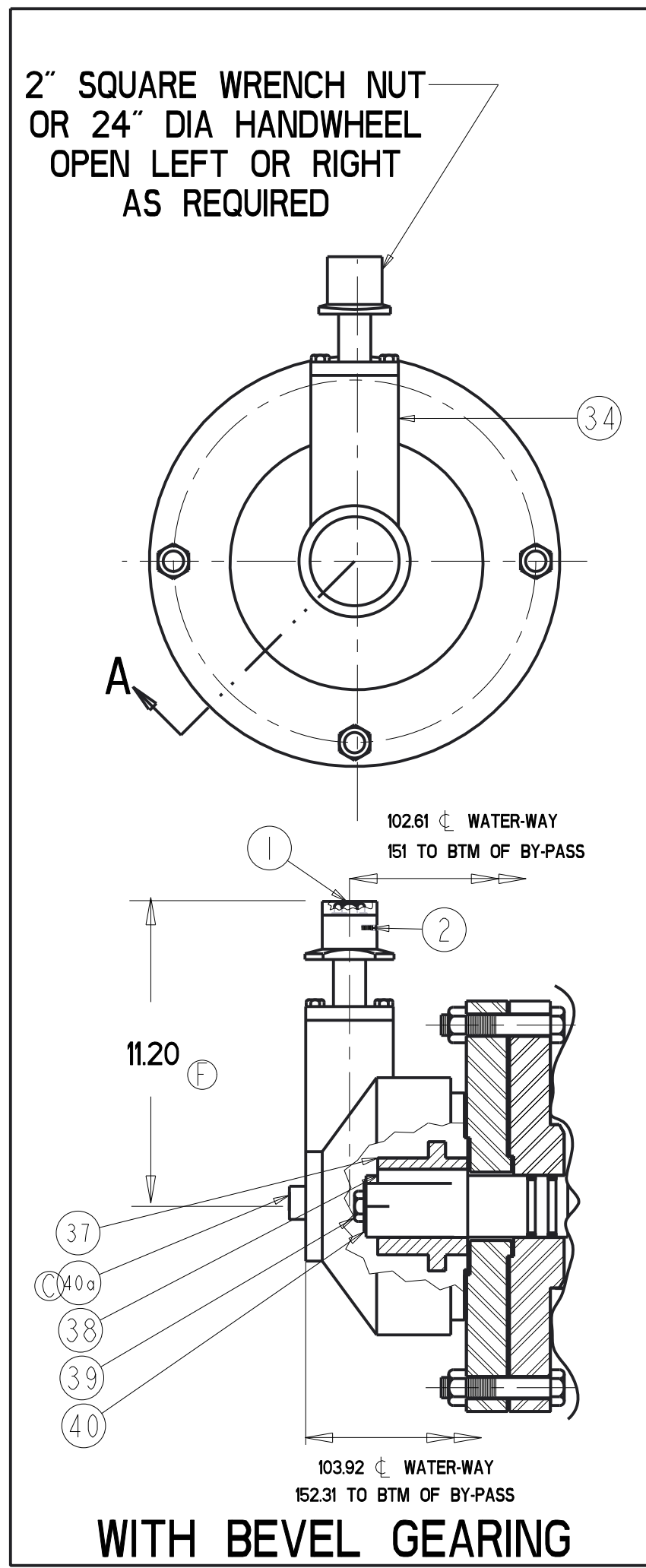


SECTION A-A



PART LIST 48" RWGV ASSEMBLY WITH SPUR GEAR OPERATOR SHOWN 19300 lbs (approx.)				
ITEM	DESCRIPTION	REQ'D	MATERIAL	ASTM
1	WRENCH NUT (SEE NOTE 6)	1	CAST IRON	A126 CLASS B
2	SET SCREW	1	STEEL	
3	SPUR GEAR (SEE NOTE 5)	1		
4	HEX BOLT 3/4" x 6.00"	4	316 STAINLESS STEEL	SEE NOTE 3
5	ADAPTER	1	HOT ROLLED STEEL	A36
6	STUFFING BOX w/SPUR GEAR	1	HOT ROLLED STEEL	A36
7	HEX NUT 3/4"	4	316 STAINLESS STEEL	SEE NOTE 3
8	SO. HEAD PIPE PLUG 1/4-18NPT	1	316 S. STEEL	
9	O-RING 5 1/8"x5 3/8"x 1/8" #251	1	RUBBER	D2000 EPDM
10	O-RING 3 3/8" x 3 3/4" x 3/16" #340	3	RUBBER	D2000 EPDM
11	O-RING 6 1/4"x6 5/8"x 3/16" #362	1	RUBBER	D2000 EPDM
12	ANTI-FRICTION (THRUST) WASHER	2	BRASS	HARD CDA260
13	SOCKET HEAD BOLT 3/4"x2 1/4"-BEVEL GEAR SOCKET HEAD BOLT 3/4"x1 1/2"-SPUR GEAR	4 4	316 STAINLESS STEEL 316 STAINLESS STEEL	SEE NOTE 3 SEE NOTE 3
14	SOCKET HEAD BOLT 1" x 5-1/2"	4	316 STAINLESS STEEL	SEE NOTE 3
15	HEAVY HEX NUT 1"	4	316 STAINLESS STEEL	SEE NOTE 3
16	EYEBOLT 1 1/2"	2	STEEL	GALVANIZED
17	HEX NUT 1 1/2"	2	STEEL	SEE NOTE 3
18	BONNET BUSHING	1	BRONZE	B62
19	STEM	1	BRONZE	SEE NOTE 1
20	BONNET	1	DUCTILE IRON	A536
21	HEX BOLT 1 1/4" x 9 1/2"	28	316 STAINLESS STEEL	SEE NOTE 3
22	HEX NUT 1 1/4"	28	316 STAINLESS STEEL	SEE NOTE 3
23	BONNET O-RING	1	RUBBER	D2000 EPDM
24	BODY	1	DUCTILE IRON	A536 GRADE
25	DISC NUT	1	BRONZE	B62
26	ENCAPSULATED DISC	1	SEE NOTE 2	
27	GUIDE CAP	2	ACETAL	
4" RWGV BY-PASS PART LIST 210lbs (approx.)				
28	BY-PASS VALVE ASSEMBLY	1		SEE NOTE 4
29	PIPE NIPPLE w/FLANGE	2	STEEL	
30	90° ELBOW - SHORT	2	STEEL	
30b	SPACER	1	STEEL	
31	FLANGE GASKET	5	RUBBER	
32	Ø 3/4" HEX BOLT (SHORT)	22	316 STAINLESS STEEL	SEE NOTE 3
32b	Ø 3/4" HEX BOLT (LONG)	6	316 STAINLESS STEEL	SEE NOTE 3
32c	Ø 3/4" THREADED STUD (LONG)	2	316 STAINLESS STEEL	SEE NOTE 3
32d	Ø 3/4" THREADED STUD (SHORT)	2	316 STAINLESS STEEL	SEE NOTE 3
33	HEX NUT 3/4"	36	316 STAINLESS STEEL	SEE NOTE 3
BEVEL GEAR PART LIST				
34	BEVEL GEAR (SEE NOTE 5)	1	STEEL	
37	STEM NUT	1	BRONZE	
38	KEY .5"x3" (USED WITH SPUR/BEVEL GEARING)	1	STEEL	
39	CAP SCREW 3/4" x 1" (SPUR/BEVEL)	1	316 STAINLESS STEEL	SEE NOTE 3
40	HOLD DOWN WASHER (USE w/SPUR/BEVEL)	1	STEEL	SEE NOTE 3
40a	PIPE PLUG 3"	1	SUPPLIED WITH GEAR	
POSITION INDICATOR PART LIST				
41	HOUSING SUB ASSEMBLY	1	STEEL	
42	DECAL FOR POSITION INDICATOR	1		
43	WINDOW GASKET	1		
44	INDICATING STEM 42" RWGV OL	1	BRONZE	
45	POINTER POSITION INDICATOR OL	1	BRONZE	
46	WINDOW	1	PLEXIGLAS/LEXAN	
BODY END CONFIGURATIONS				
47	FLANGE x FLANGE BODY	1	DUCTILE IRON	A536
52	PIPE PLUG	2	SUPPLIED WHEN TAPPED	

- NOTES:

1. BRONZE ASTM B584 ALLOY C86200

2. RUBBER ENCAPSULATED DUCTILE IRON DISC
RUBBER - EPDM ASTM D2000
DUCTILE IRON - ASTM A536 GRADE 65-45-12

3. BOLTS - ASTM F593 GROUP 2
NUTS - ASTM F594 GROUP 2
4. BY-PASS VALVE
4" RWGV - FLANGE ENDS
BY-PASS VALVES ARE EQUIPPED WITH 2" SQUARE WRENCH NUTS
OR 6" DIA HANDWHEELS OPEN LEFT OR RIGHT AS REQUIRED

5. VALVES TO BE FURNISHED WITH ONE OF THE LISTED OPERATORS
BEVEL: ROTORK B7, RATIO 41:1 TURNS TO OPEN 596.
SPUR: ROTORK 157, RATIO 41:1 TURNS TO OPEN 596
6. MANUFACTURER'S OPTION TO UPGRADE MATERIAL TO
DUCTILE IRON A536 GRADE 65-45-12

DR BY: AO	DATE: 06/08/17	UNLESS OTHERWISE NOTED	THIRD ANGLE PROJECTION	C.B. NO.
CHKD: BB	DATE: 06/08/17	BREAK CAST CORNER(S)	PURCH. FINISH NO ASSY REF. NO. SCALE NONE	PART: NO.
ENGR: MS	DATE: 06/08/17	BREAK WASH CORNER(S)		
MSR:		TOLERANCES		
MFR:		UNLESS OTHERWISE NOTED		
TOOL:		LINEAR ANGULAR		
FDY:		± ±	STR. NO.	
NOTED				
DESCR: 54" RWGV 250-PSI AWWA C515		NUMBER U7422		