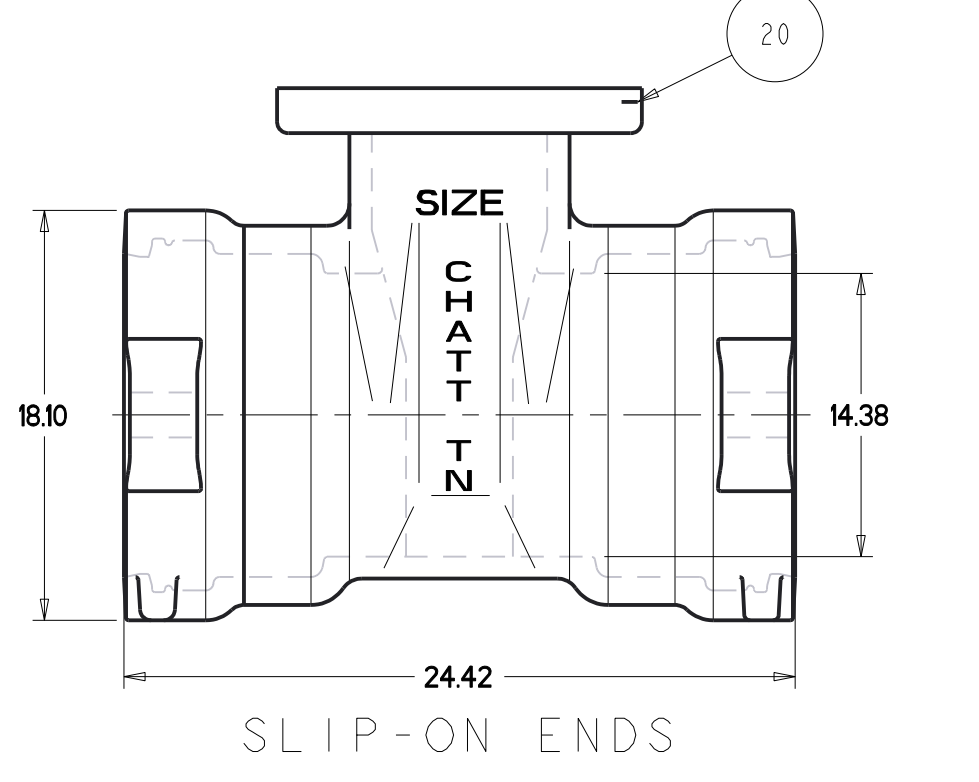
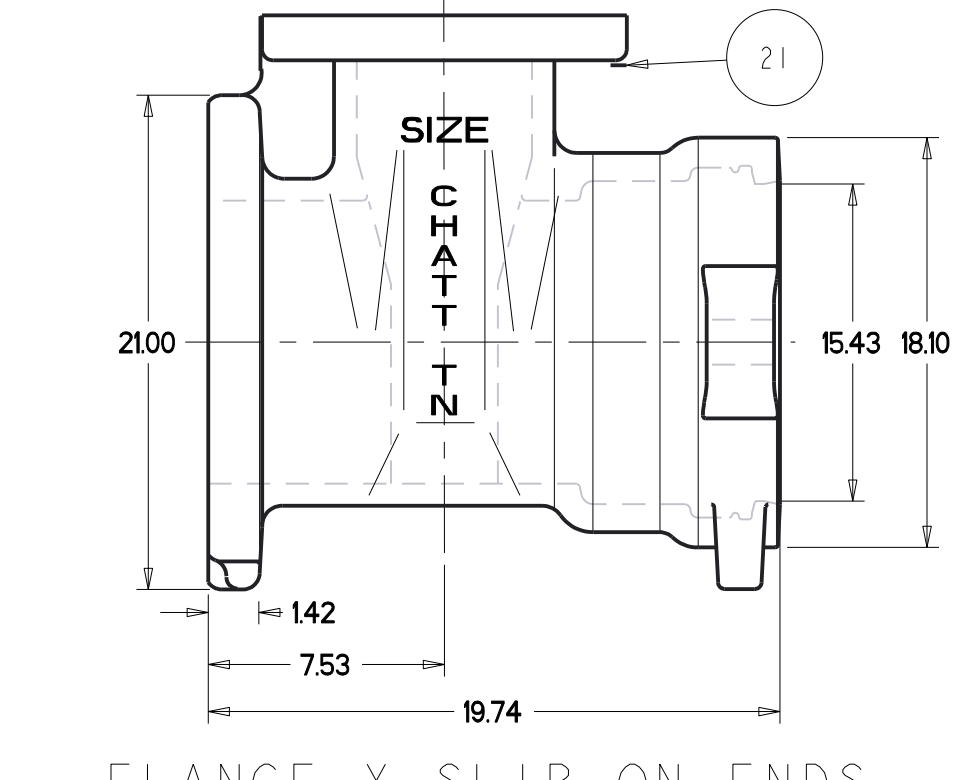
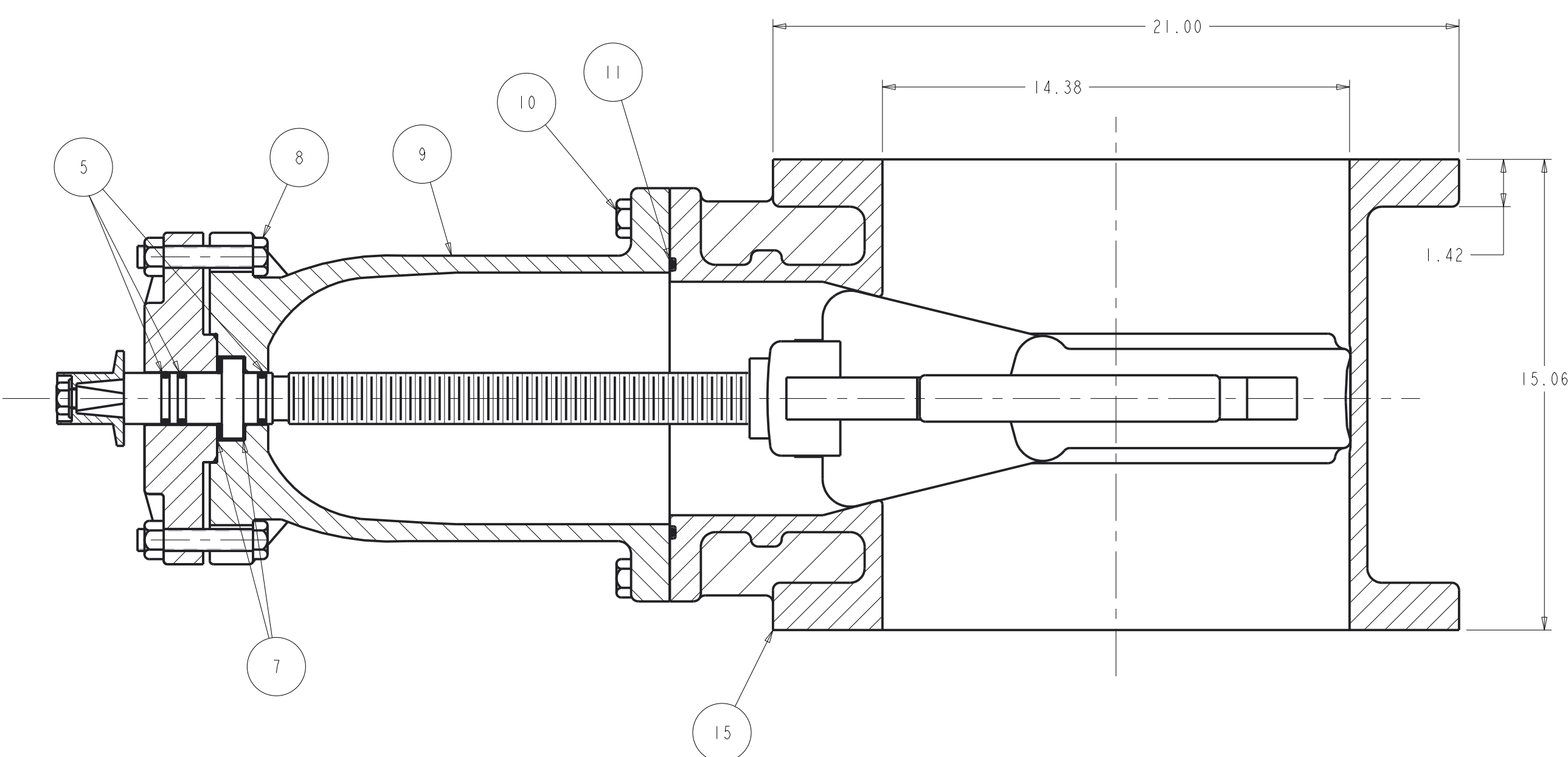
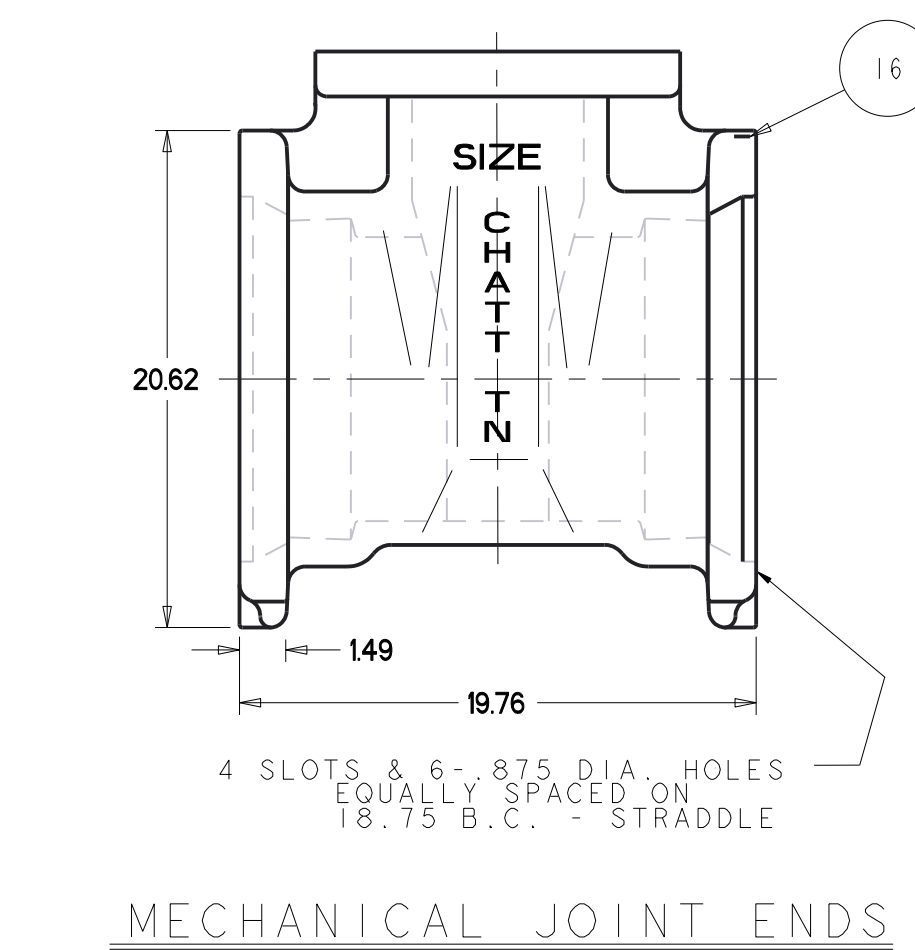
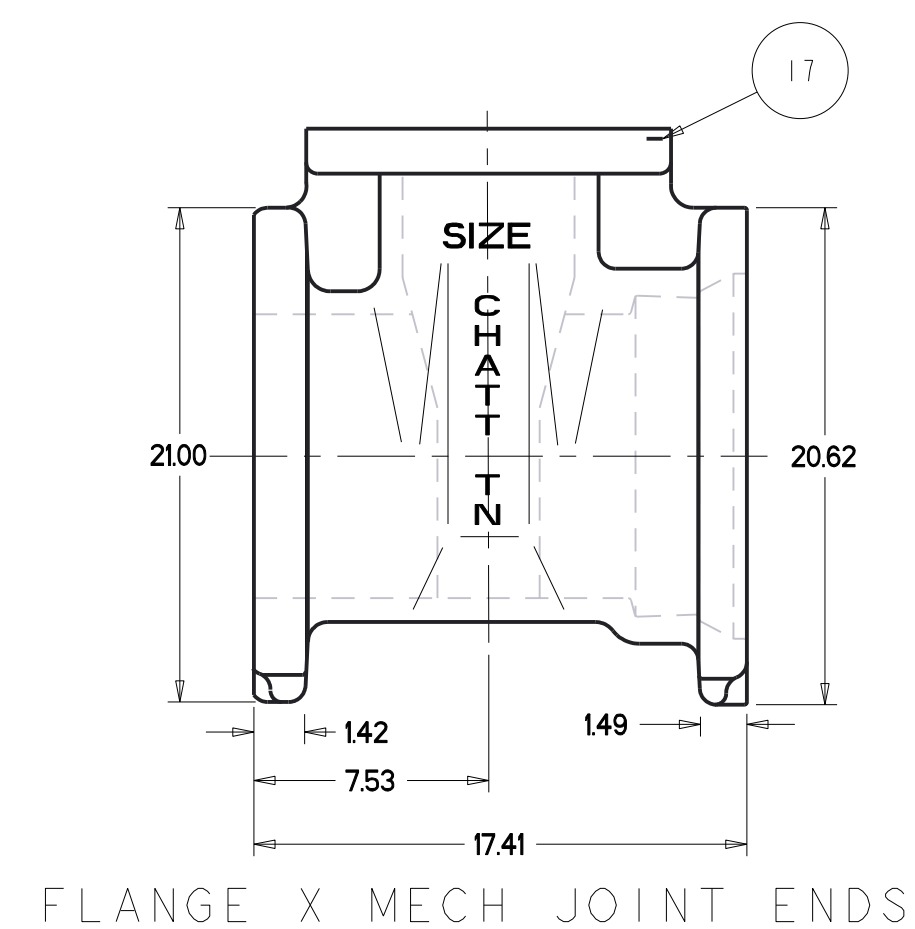


PARTS LIST

ITEM	DESCRIPTION	REQ'D	MATERIAL	ASTM	GROUP
1	CAP SCREW	1	316 STAINLESS STEEL	F593	GROUP 2-CW
2	WRENCH NUT	1	CAST IRON	A126	CLASS B
3	STEM	1	MANGANESE BRONZE	B138	ALLOY 676
4	STUFFING BOX	1	DUCTILE IRON	A536	
5	"O" RING	3	RUBBER	D2000	MUELLER R34
6	"O" RING	1	RUBBER	D2000	MUELLER R34
7	ANIT-FRICTION WASHER	2	BRASS		
8	HEX BOLT	2	316 STAINLESS STEEL	F593	GROUP 2-CW
9	BONNET	1	DUCTILE IRON	A536	
10	HEX BOLT	12	316 STAINLESS STEEL	F593	GROUP 2-CW
11	HEX NUT	12	316 STAINLESS STEEL	F594	GROUP 2-CW
12	"O" RING	1	RUBBER	D2000	MUELLER R34
13	DISC NUT	1	BRONZE	B62	UNS 83600
14	DISC	1	SEE NOTE 1		
15	GUIDE CAP	2	ACETAL		
16	FLG x FLG BODY	1	DUCTILE IRON	A536	
17	MJ x MJ BODY	1	DUCTILE IRON	A536	
18	FLG x MJ BODY	1	DUCTILE IRON	A536	
19	EYE BOLT	2	STEEL		ANSI B18.15
20	HEX NUT	2	STEEL	A536	GRADE B
21	SL x SL BODY	1	DUCTILE IRON	A536	
22	SL x FLG BODY	1	DUCTILE IRON	A536	



NOTE:
 1. RUBBER ENCAPSULATED DUCTILE IRON DISC
 DUCTILE IRON - ASTM A536 65-45-12
 RUBBER - MUELLER RUBBER SPEC R88 (SBR)

DR BY: AO	10/3/17	UNLESS OTHERWISE NOTED	THIRD ANGLE PROJECTION	C.D. NO.
CHKD: BB	10/3/17	BREAK CAST CORNERS	PURCH. NO. FINISH ASSY	PART. NO.
ENGR: MS	10/3/17	BREAK MACH CORNERS		
MFR:		TOLERANCES	STR. NO.	
MFG:		UNLESS OTHERWISE NOTED		
TOOL:		LINEAR		
FDRY:		ANGULAR		
MAT'L NOTED				
UNITED STATES PIPE AND FOUNDRY CO. CHATTANOOGA TENNESSEE		DESCR: 14" RWGV ALL END TYPES		NUMBER U7450

APPROVED
 By Matthew Sliger at 2:18 pm, Nov 07, 2017

U7450 14" RWGV - ALL END TYPES