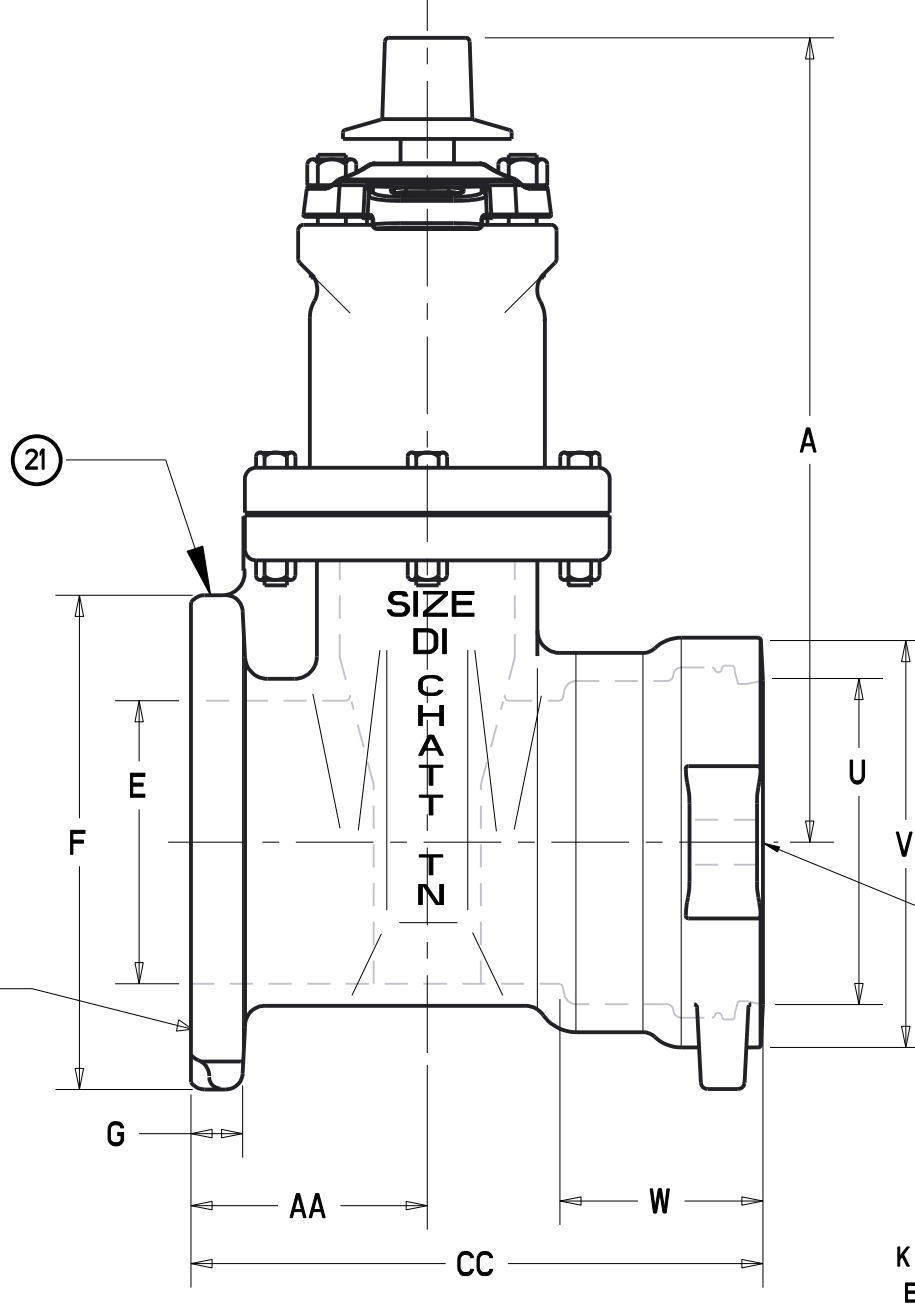
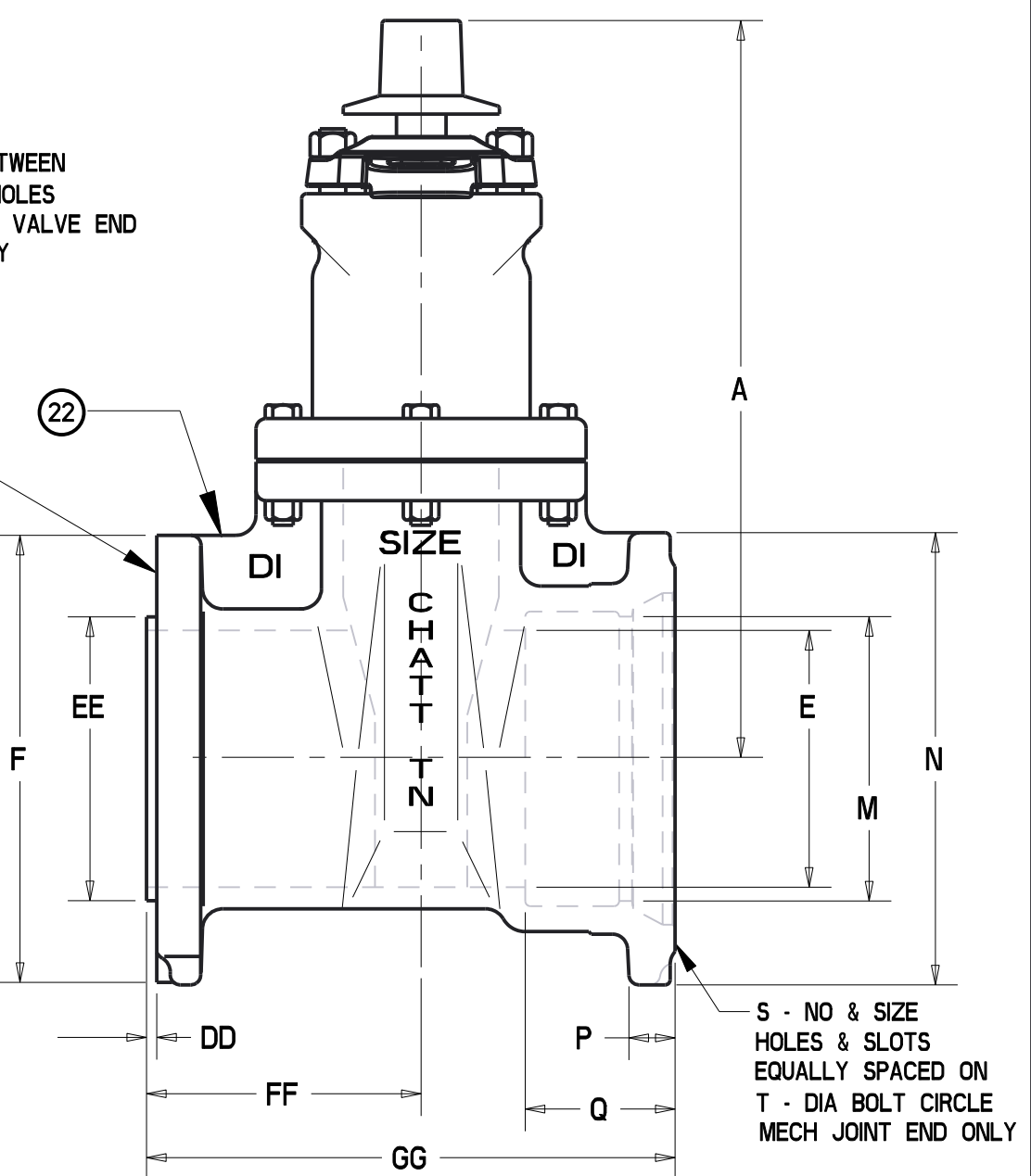


FLANGE X MECH JOINT ENDS



FLANGE X SLIP-ON ENDS

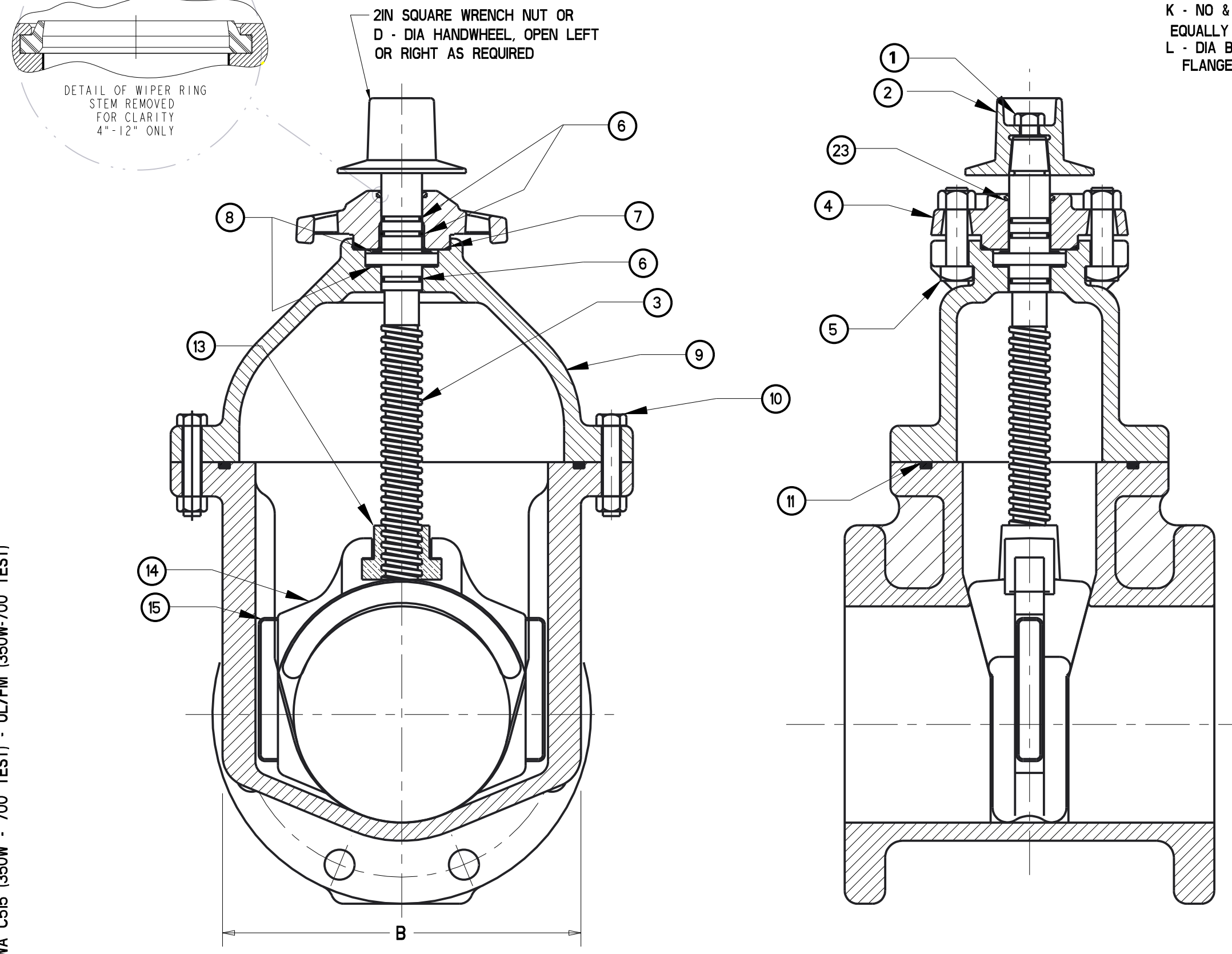
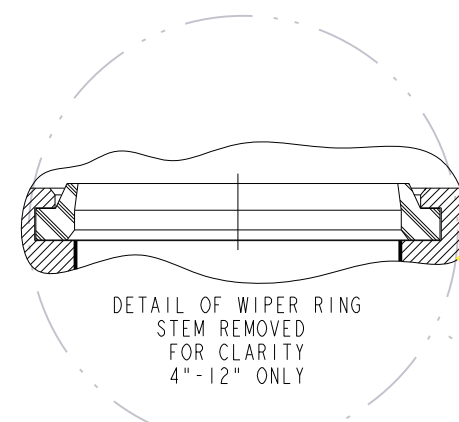


FLANGE X MECH JOINT ENDS

TAPPING VALVE

PART LIST					
ITEM	DESCRIPTION	REQ'D	MATERIAL	ASTM	NOTES
1	CAP SCREW	1	316 STAINLESS STEEL	F593	GROUP 2-CW
2	WRENCH NUT	1	DUCTILE IRON	A536	
3	STEM	1	BRONZE	B138	ALLOY C67600
4	STUFFING BOX	1	DUCTILE IRON	A536	
5	STUFFING BOX BOLTS	2	316 STAINLESS STEEL	F593	GROUP 2-CW
	STUFFING BOX NUTS		316 STAINLESS STEEL	F594	GROUP 2-CW
6	O-RING	3	NITRILE	D2000	R34
7	O-RING	1	NITRILE	D2000	R34
8	ANTI-FRICTION WASHER	2	ACETAL		
9	BONNET	1	DUCTILE IRON	A536	
10	BONNET BOLTS	2	316 STAINLESS STEEL	F593	GROUP 2-CW
	BONNET NUTS		316 STAINLESS STEEL	F594	GROUP 2-CW
11	BONNET GASKET (O-RING)	1	NITRILE	D2000	R34
13	DISC NUT	1	BRONZE	B584	ALLOY C89833
14	DISC	1	SEE NOTE 1		
15	GUIDE CAP	2	ACETAL		
19	BODY - SLIP-ON ENDS	1	DUCTILE IRON	A536	
20	BODY - FLANGE x MJ END	1	DUCTILE IRON	A536	
21	BODY - FLANGE x SLIP-ON END	1	DUCTILE IRON	A536	
22	TAPPING BODY - FLANGE x MJ END	1	DUCTILE IRON	A536	
23	WIPER RING	1	THERMOPLASTIC POLYURETHANE	D412/D624	D2240/D792

NOTES
 1. RUBBER ENCAPSULATED DISC
 CASTING - DUCTILE IRON ASTM A536
 RUBBER - SBR- ASTM D2000
 2. THE INTERIOR/EXTERIOR OF THE BODY AND BONNET
 ARE COATED WITH FUSION BONDED EPOXY.



VALVE SIZE	DIMENSIONS FOR RESILIENT WEDGE VALVE - INCHES / [MILLIMETERS] (this drawing only)																												TURN TO OPEN
	A	B	C	E	F	G	K	L	M	N	P	Q	S	T	U	V	W	X	Y	Z	AA	BB	CC	DD	EE	FF	GG		
4	14.19 [360.43]	8.25 [209.55]	10.79 [274.07]	4.30 [109.22]	9.00 [228.60]	.94 [23.88]	8-0.75 [8-19.05]	7.50 [190.50]	4.90 [124.46]	9.12 [231.65]	100 [25.40]	2.50 [63.50]	4-0.88 [4-22.35]	7.50 [190.50]	4.92 [124.97]	6.88 [174.75]	4.12 [104.65]	12.81 [325.37]	8.62 [218.95]	4	4.50 [114.30]	9.50 [241.30]	10.91 [277.11]	.18 [4.57]	4.97 [126.60]	6.05 [153.67]	11.73 [297.94]	14	
6	18.00 [457.20]	10.50 [266.70]	13.50 [342.90]	6.30 [160.02]	11.00 [279.40]	1.06 [26.92]	8-0.88 [8-22.35]	9.50 [241.30]	7.00 [177.80]	11.12 [282.45]	109 [27.69]	2.50 [63.50]	6-0.88 [6-22.35]	9.50 [241.30]	7.02 [178.31]	9.12 [231.65]	4.38 [111.25]	14.96 [379.98]	10.62 [269.75]	6	5.25 [133.35]	11.06 [280.92]	12.73 [323.34]	.25 [6.35]	6.97 [177.42]	6.50 [165.10]	12.75 [323.85]	20.5	
8	21.50 [546.10]	13.21 [335.53]	16.36 [415.54]	8.30 [210.82]	13.50 [342.90]	1.19 [30.23]	8-0.88 [8-22.35]	11.75 [298.45]	9.15 [232.41]	13.37 [339.60]	118 [29.97]	2.50 [63.50]	6-0.88 [6-22.35]	11.75 [298.45]	9.30 [236.22]	11.38 [289.05]	5.62 [142.75]	17.94 [455.68]	13.12 [333.25]	6	5.75 [146.05]	12.09 [307.09]	14.72 [373.89]	.25 [6.35]	8.97 [228.22]	7.50 [190.50]	14.37 [365.00]	26.5	
10	25.50 [647.70]	16.48 [418.59]	19.99 [507.75]	10.30 [261.62]	16.00 [406.40]	1.25 [31.75]	12-100 [12-25.40]	14.25 [361.95]	11.20 [284.48]	15.62 [396.75]	125 [31.75]	2.50 [63.50]	8-0.88 [8-22.35]	14.00 [355.60]	11.38 [289.05]	13.50 [342.90]	5.62 [142.75]	18.50 [469.90]	16.38 [416.05]	8	6.50 [165.10]	13.94 [354.08]	15.75 [400.05]	.25 [6.35]	10.97 [279.02]	8.27 [210.06]	15.70 [398.78]	33	
12	28.62 [726.95]	16.83 [427.48]	21.00 [533.40]	12.30 [312.42]	19.00 [482.60]	1.31 [33.27]	12-100 [12-25.40]	17.00 [431.80]	13.30 [337.82]	17.88 [454.15]	131 [33.27]	2.50 [63.50]	8-0.88 [8-22.35]	16.25 [412.75]	13.33 [338.58]	15.75 [400.05]	5.62 [142.75]	18.70 [474.98]	18.12 [460.25]	8	7.00 [177.80]	14.50 [368.30]	16.35 [415.29]	.25 [6.35]	12.97 [329.82]	7.13 [181.10]	15.00 [381.00]	38.5	

APPROVED
 By Matthew Sliger at 12:34 pm, Dec 27, 2017

SR BY: AO	DATE: 12/13/17	UNLESS OTHERWISE NOTED	THIRD ANGLE PROJECTION	C.D. NO.
CHKD: BB	DATE: 12/13/17	BREAK CAST CORNERS		
ENGR: MS	DATE: 12/13/17	BREAK MACH CORNERS		
MFR:		TOLERANCES	PURCH: NO	FINISH: ASSY
MFG:		UNLESS OTHERWISE NOTED	REF. NO.	SCALE: NONE
TOOL:		LINEAR	ANGULAR	STR. NO.
FBRY:		±	±	
MAT'L NOTED		UNITED STATES PIPE VALVE & HYDRANT DIVISION CHATTANOOGA, TENNESSEE		NUMBER
		DESCR: 4IN - 12IN USPI w/ 316 SS FASTENERS AWWA C515 - 350W - 700 TEST UL/FM 350W - 700 TEST		U7453